

MAP 7.4 ELECTRICITY NETWORK IN TORTOLA

Telecommunication lines are also carried on these utility poles. Within Road Town the telecommunication lines are buried, and so too are the trunk cables outside of Road Town, and fibre optic cable networks. There are a number of transmission towers which are part of the telecommunication network, the largest of which is found at Chalwell just outside Road Town at an altitude of about 1300 ft.

The cable television system consists of three 10 foot satellite dishes located at an elevation of about 800 ft, on Butu Mountain overlooking Road Town. Distribution lines are carried on the electricity utility poles and extend throughout most of Tortola and Virgin Gorda.

The public water supply consists of small networks consisting of small diameter pipes and small holding tanks, which distribute water produced by privately run desalination plants, **Map 7.3**. The largest network is in Road Town and at present the water provided by the Water and Sewerage Department augments the water which most households obtain from individual cisterns which store rainwater.

7.2.3 CRITICAL FACILITIES

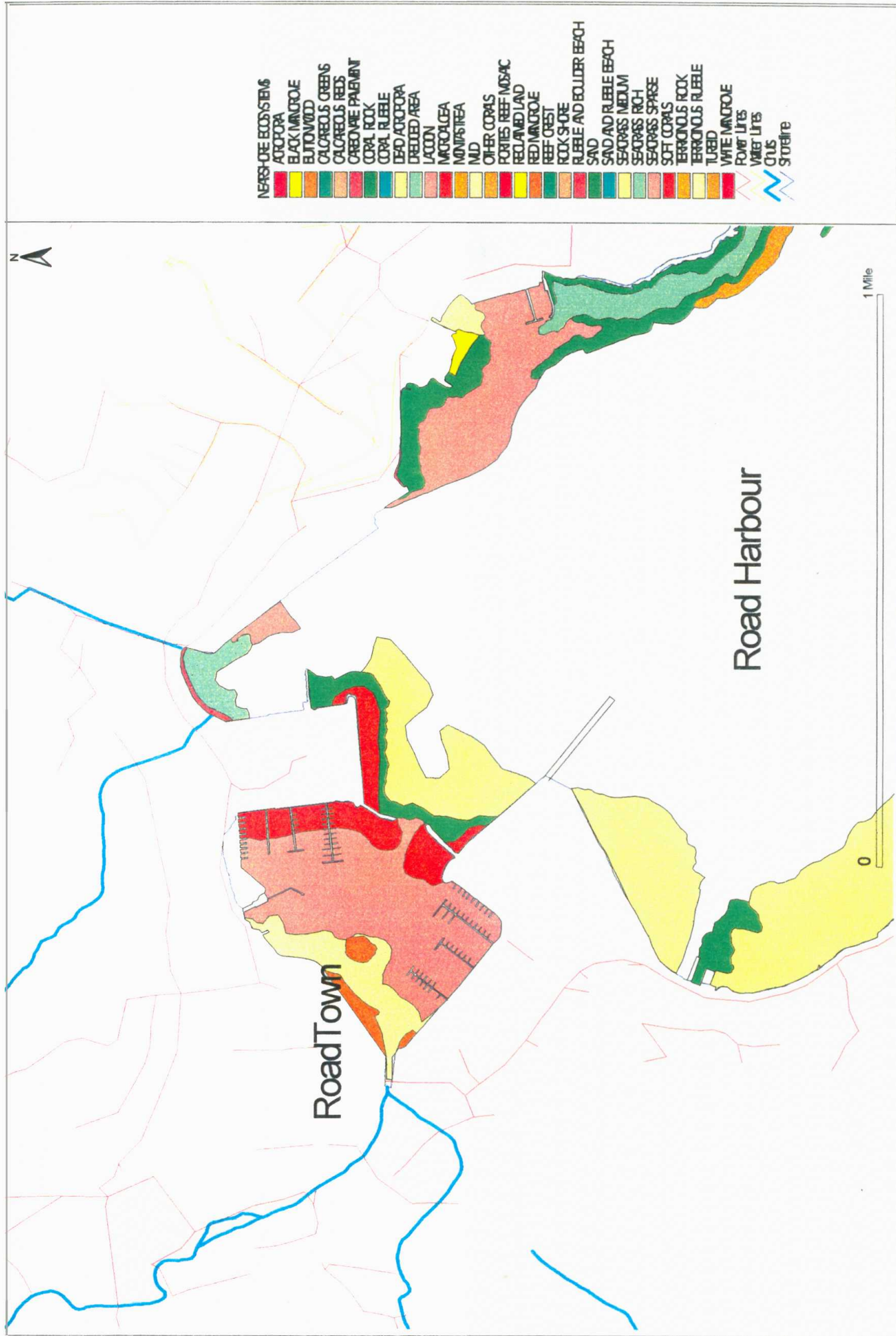
Critical facilities consist of police stations, health facilities, emergency shelters, fire stations, and other governmental and non-governmental facilities which are of vital importance such as the Central Administrative Building, electrical power generation facilities, and the Red Cross buildings.

7.2.4 BOATING SECTOR

There are estimated to be about 650 yachts most of which are in the 35-50 foot range, operated by 5 fairly large charter operators in Tortola and Virgin Gorda. These charter companies operate on average about 60 -100 boats, as well as small operators with one to 50 boats. The largest is the Moorings Marina which is located in Road Harbour and operates about 150 boats year round. There are about 600 small open craft power boats, of which about 200 are fishing boats and the remainder are pleasure boats, most of which are moored around Tortola.

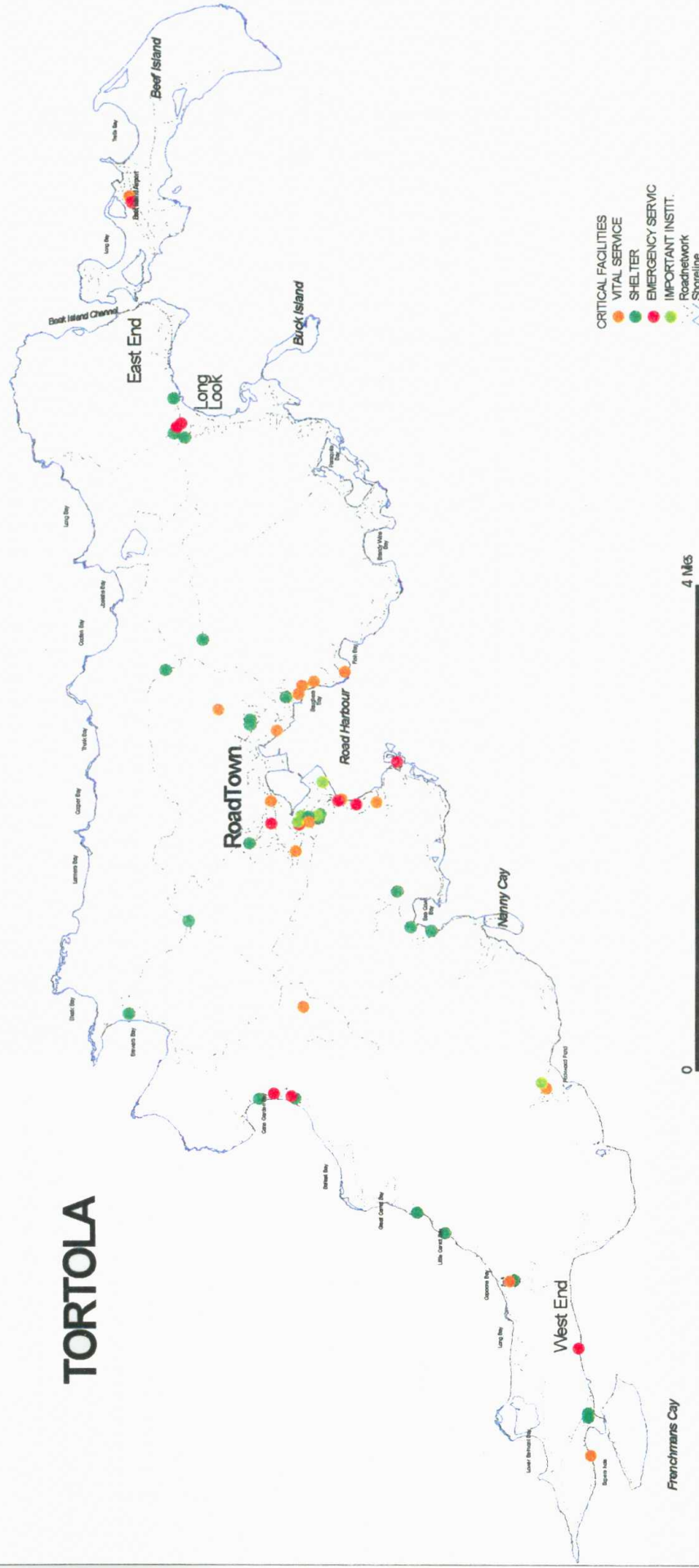
7.2.5 NEAR SHORE BIOTIC INVENTORY

The inventory dataset includes an inventory of the near shore biotic environment which was also supplied by the Town Planning Department, **Map 7.5**. This dataset contains a detailed mapping of the distribution of biotic communities and important physical features of the coastline.



MAP 7.5 Road Town Inventory Dataset

TORTOLA



MAP 7.6 CRITICAL FACILITIES IN TORTOLA