

## Table of Contents

	Page
1. Form of Unit -----	1
2. Horizontal Assembly of Unit -----	3
3. Organization of Horizontal Unit -----	4
4. Position of Commander -----	5
5. Position of Platoon Leader -----	6
6. Basic Posture -----	6
7. At Ease -----	9
8. Right Face (Left Face) -----	14
9. About Face -----	15
10. Quick March -----	16
11. Halt of Quick March -----	18
12. Running March -----	19
13. Halt of Running March -----	24
14. Bowing -----	25

## 1. Form of Unit

- (1) The unit is formed horizontally, side vertically, and vertically, as shown in figures 1 and 2.
- (2) The horizontal form is used mainly during assembly, inspection, and short-distance actions; the side vertical form is used mainly for actions performed in coordination with the horizontal form; and the vertical form is used mainly for assembly and long-distance actions.

Fig. 1

Horizontal form

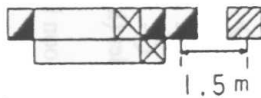


Fig. 1-2

Side vertical form

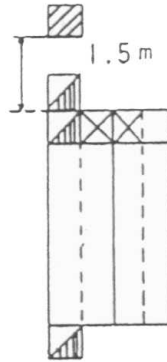
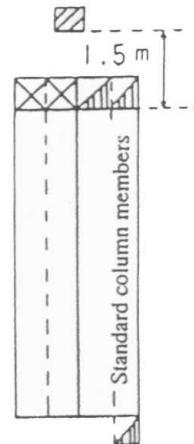
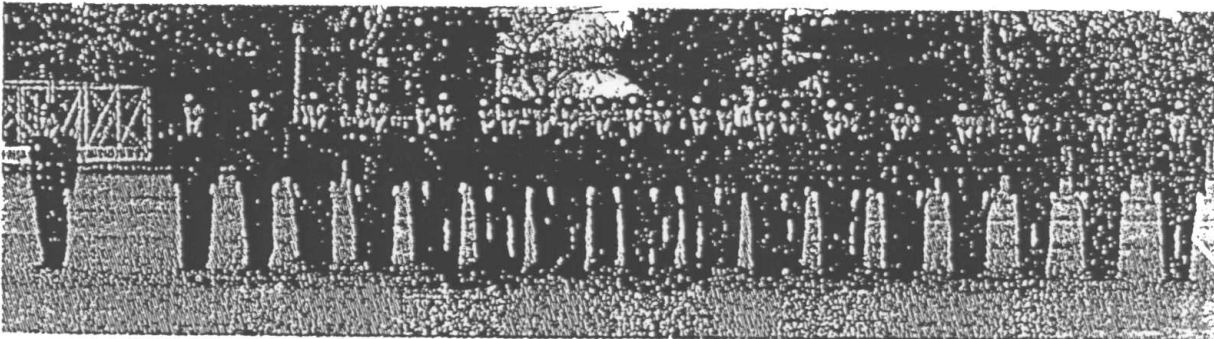


Fig. 2

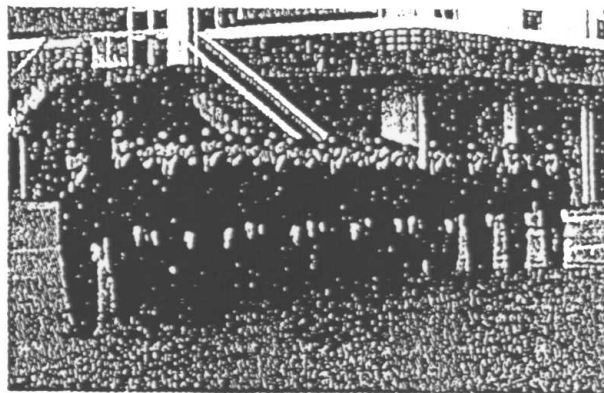
Vertical form

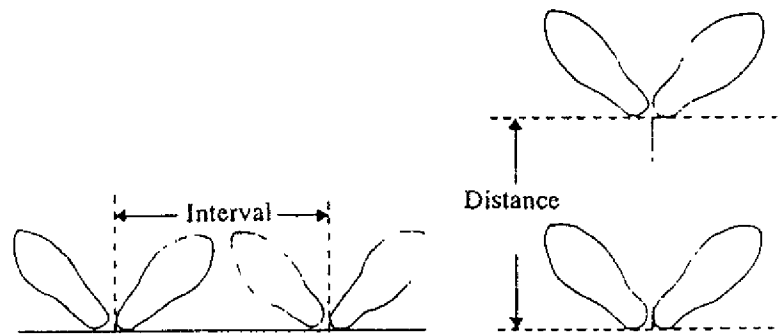


Horizontal form

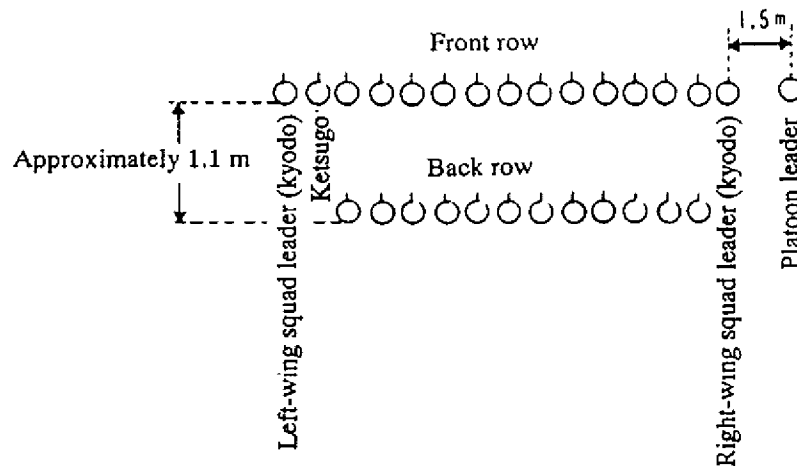


Vertical form





### Horizontal form



### [Explanation]

The unit is formed horizontally, side vertically, and vertically. The horizontal form is used mainly for assembly, inspections, and unit actions in a limited space. The side vertical form is used for actions performed in coordination with the horizontal form. The vertical form is used mainly for unit actions such as long-distance marching.

## 2. Horizontal unit assembly

- (1) The basic posture is assumed to assemble the unit horizontally, and the command "assemble" is given by raising the right hand vertically.
- (2) Following the command given in the previous clause, the right-wing squad leader assumes the basic posture at a distance approximately 5 m in front of the commander. Raising the right hand vertically and calling out "standard position," the leader moves to the fixed position of the horizontal unit. Members line up in rows (by height) to the left of the right-wing squad leader, with appropriately 1.1 m between each row.
- (3) Unit members place their right hands on their hips to regulate the distance between each member. Members in the back row follow members in the front row, and members stand in a straight line and adjust to the right. After forming a straight line, the right hand is dropped from the hip.

### [Explanation]

In order to assemble the unit horizontally, the commander (platoon leader) assumes the basic posture; he raises his right hand vertically, with his palm facing outward, and gives the command "assemble." The hand is lowered when the right-wing squad commander calls out "standard position." Upon the commander's command of "assemble," the right-wing squad leader runs and correctly faces the commander at a distance of approximately 5 m; he raises his right hand vertically, in a similar manner to the commander, with his palm facing outward, and calls out "standard position." The hand is lowered when approximately 1/3 of the members form the assembly row. Members run forming two rows to the left of the right-wing squad leader, as shown in Figure 1 (horizontal form). Members in the back row stand approximately 1.1 m behind the front row (measured from the heel of the person in front to the heel of the person in back).



After lowering his hand, the right-wing squad leader turns his head to the left and corrects the position of the 2nd and 3rd line members. After confirming the appearance of the line, he turns his head to the front. The left-wing platoon leader follows the same pattern as the right wing squad leader.

When members finish forming the straight line, after the right-wing squad leader has turned his head to the front, members lower their hands in the order of 1, 2, 3, 4...., and turn their heads to the front.

The first member in the back row turns his head to the left following the action of the right-wing squad leader and corrects the position of the 2nd and 3rd line members in order to form a straight line. After the right-wing squad leader turns his head to the front, the 1st member immediately turns his head to the front.

### **3. Organization of Horizontal Unit**

- (1) In order to assemble the horizontal unit, the command "right (left) face" is given.
- (2) Upon the command given in the previous clause, members except for the right-wing squad leader and the 1st member of the back row place their hands on their hips, with elbows extended to the side. Members in the back row adjust their distance to the members in front row, and turn their heads to the right to coordinate their position.
- (3) After the unit is coordinated, members turn their heads back to the front upon the command "return" and lower their right hands.

