



Photo 2-3-25

2) Lifting by three people

Transfer a patient (using three people) the same way as by two people. (Photo 2-3-25)

3. Transfer by locking wrists (two persons)

(1) Each ambulance paramedic holds the other's left wrist with their right hand, and right wrists with left hand, respectively, so both arms are intertwined. (Photo 2-3-26)

(2) Each paramedic kneels on one knee, which is closest to the patient to allow the patient to sit on their locked arms. Then, the patient can put an arm over each paramedic on either side so they can support themselves during the transfer. (Photo 2-3-27)

4. Transfer by locking arms

(1) Intertwine arms with the other paramedic, only this time grasp the partner's forearms instead of their wrists (Photo 2-3-28)

(2) Place one pair of locked arms behind the patient's back, and the other pair of locked arms in the popliteal fossa. Then, transfer the patient the same way as when transferring a patient with locked wrists (Photo 2-3-29)



Photo 2-3-26

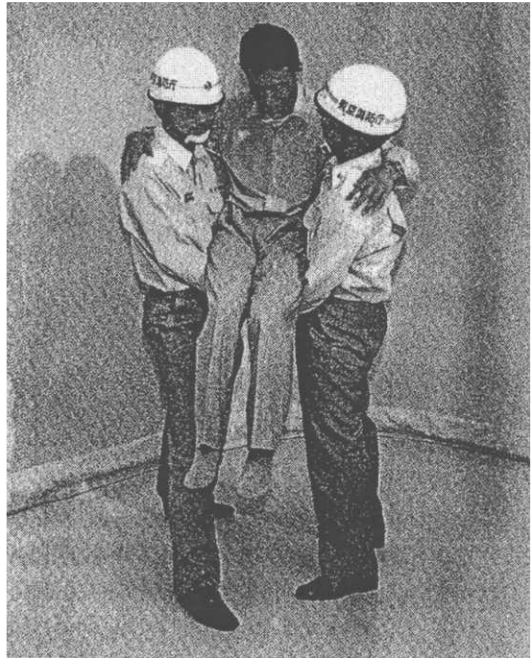


Photo 2-3-27



Photo 2-3-28

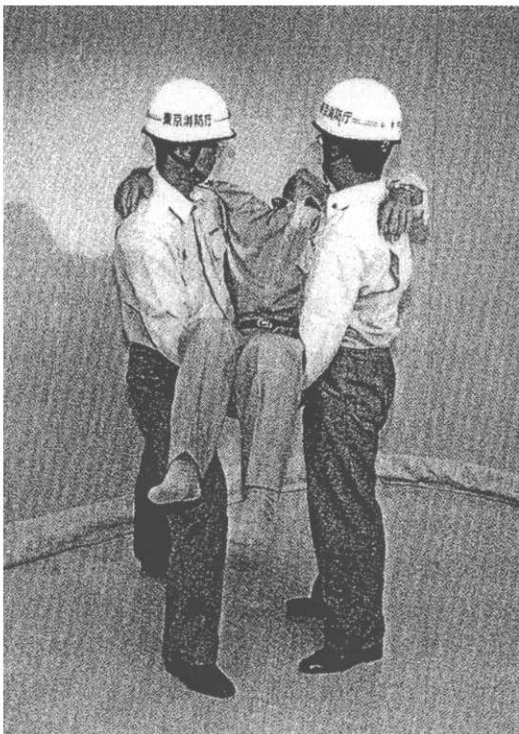


Photo 2-3-29

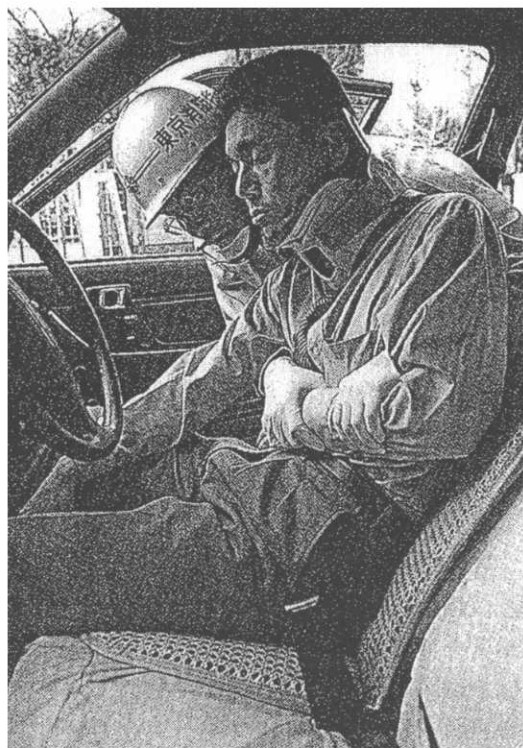


Photo 2-3-30

5. Rescue and transfer of an injured driver

(1) Crouch behind the back of the victim.

Insert your forearms under the victim's armpits. Then, place their forearm (closest to the center of the car) on their chest, and hold their elbow and wrist. (Photo 2-3-30)

If the victim's spine (or spinal cord) is (or possibly is) damaged, first immobilize their neck region.

(2) Maintain a position that does not compress the victim's chest by pushing the victim's forearm, then place the victim's breech on your thigh and pull the victim out of the car while pulling the victim's upper body (Photo 2-3-31)

Another rescue member assists in the transfer by holding the victim's thighs.

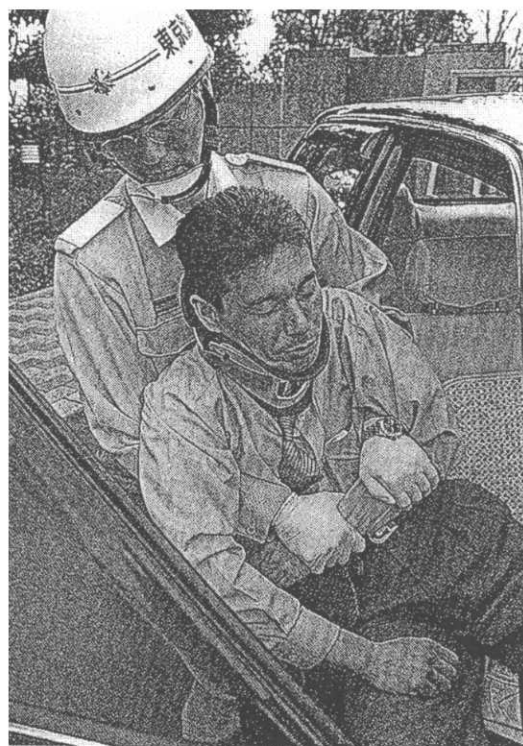


Photo 2-3-31