

8. HOMELESS

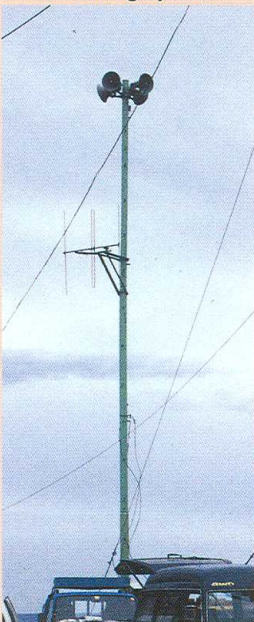
EVACUATION AND ACCOMMODATION OF HOMELESS PEOPLE

Immediately after the shock, the Okushiri town government issued warnings for tsunami using a radio warning system (photo bottom left). Most of the people in Aonae, however, were well aware of tsunamis after an earthquake and had left their homes and rushed towards the hill even before the warning. Staircases and evacuation routes to the top of the hill had been constructed after the tsunami ten years ago and they were effective for the quick evacuation in this event (photo top right).

Homeless people in Aonae were mainly accommodated in the gymnasium of Aonae Middle High School (photo middle right). In other communities, affected inhabitants tentatively settled in local community centre buildings and tourist facilities such as hotels and restaurants.

Most of the children who had lost their parents were looked after by their relatives and acquaintances in the local community. Within two weeks after the disaster, prefabricated houses were constructed to accommodate the homeless in each affected community (photo bottom right). It should be noted that those houses are temporary facilities to be rented for a maximum of two years and the residents are expected to find permanent dwellings within this period. It is not an easy task for one who has lost all his property to reconstruct a new house in this time. Among the homeless, there was an unlucky fisherman who had also lost his house ten years ago and after its reconstruction is still shouldering a housing loan that needs to be refunded.

Radio warning system



Staircases and evacuation routes



Gymnasium of Aonae Middle High School
(Source: Prof. Y.Murosaki, Kobe Univ.)



Temporary housing for the homeless