

Laying pipelines along a river bank increases risk, because a rise in water level might cause accidents and system failures



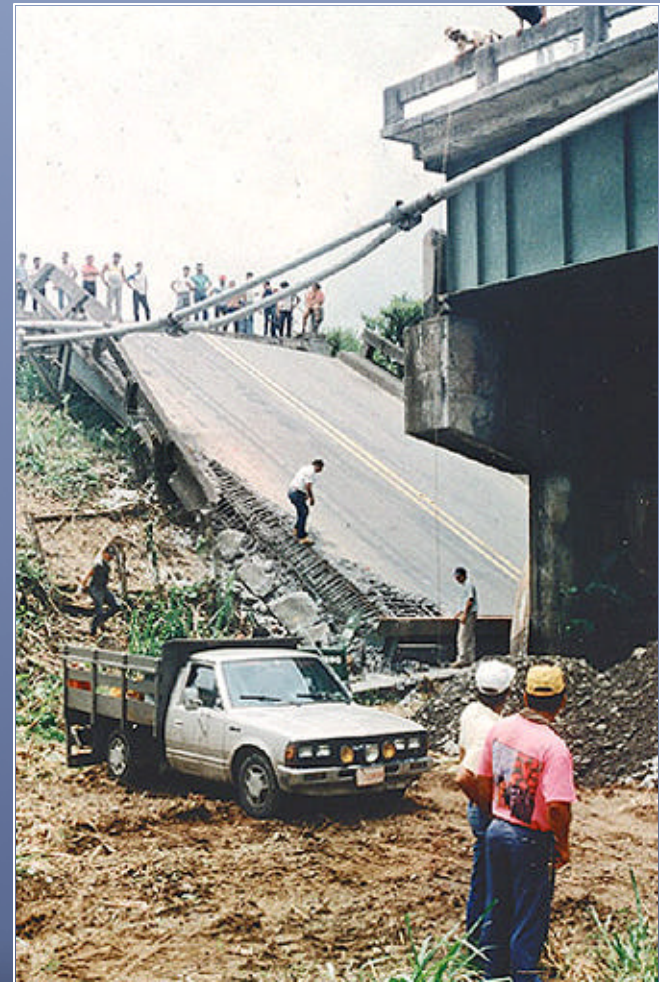
Source: EAPAM / April 1998



Following the course of roads and bridges when laying pipelines can increase their vulnerability



Source: Macías, Ramón / February, 2000



Source: OPS / OMS



*Determining the system's physical deficiencies enables
the adoption of corrective measures*



Source: Macías, Ramón / February, 2000