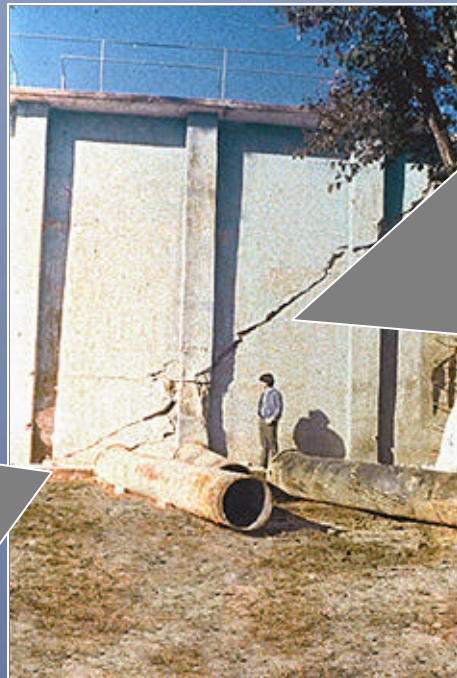




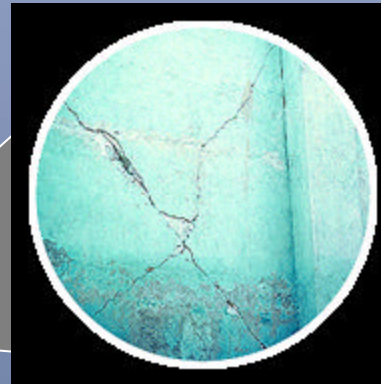
*The main types of damage an **earthquake** can cause on sanitation systems are:*

- The partial or total destruction of catchment, conduction, treatment, storage and distribution structures
- The rupture of pipes and damage to joints
- Alterations in water quality due to landslides
- Variations in the level of surface or groundwater catchments
- Changes in the place water comes out of springs

An **earthquake** can render a component useless



Source: OPS / OMS



Source: OPS / OMS



Earthquakes can cause damage that is hard to detect, particularly in the case of those components that are hard to inspect visually



Source: AyA



Copyright © 2000 OYO Corporation