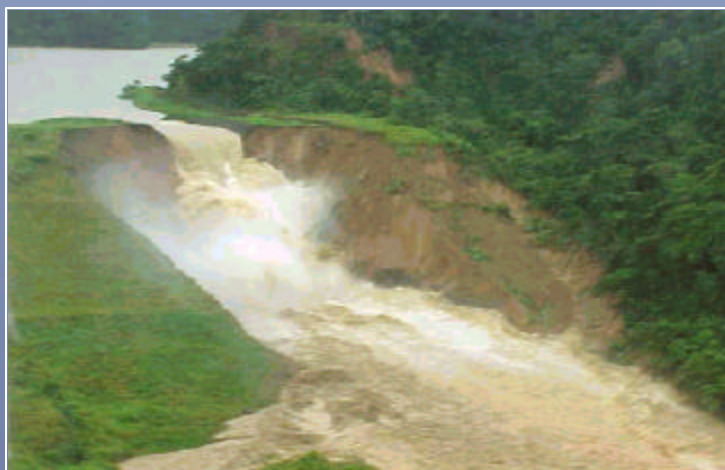


*When a dam or reservoir breaks, it not only entails a loss in water supply but can have devastating effects on settlements downstream*



Source: R. Jovel



Source: Acquaviva / 2000



Source: OPS / OMS



Source: OPS / OMS



**Floods** can obstruct pipes and lead to the collapse of the system



Source: Macías, Ramón / May, 2000