

Figure 22. Analysis of hurricane landfall probabilities in 100+ years (<http://www.nhc.noaa.gov/pastate.html>).

Figure 22: Analysis of hurricane of landfall probabilities in 100+ years

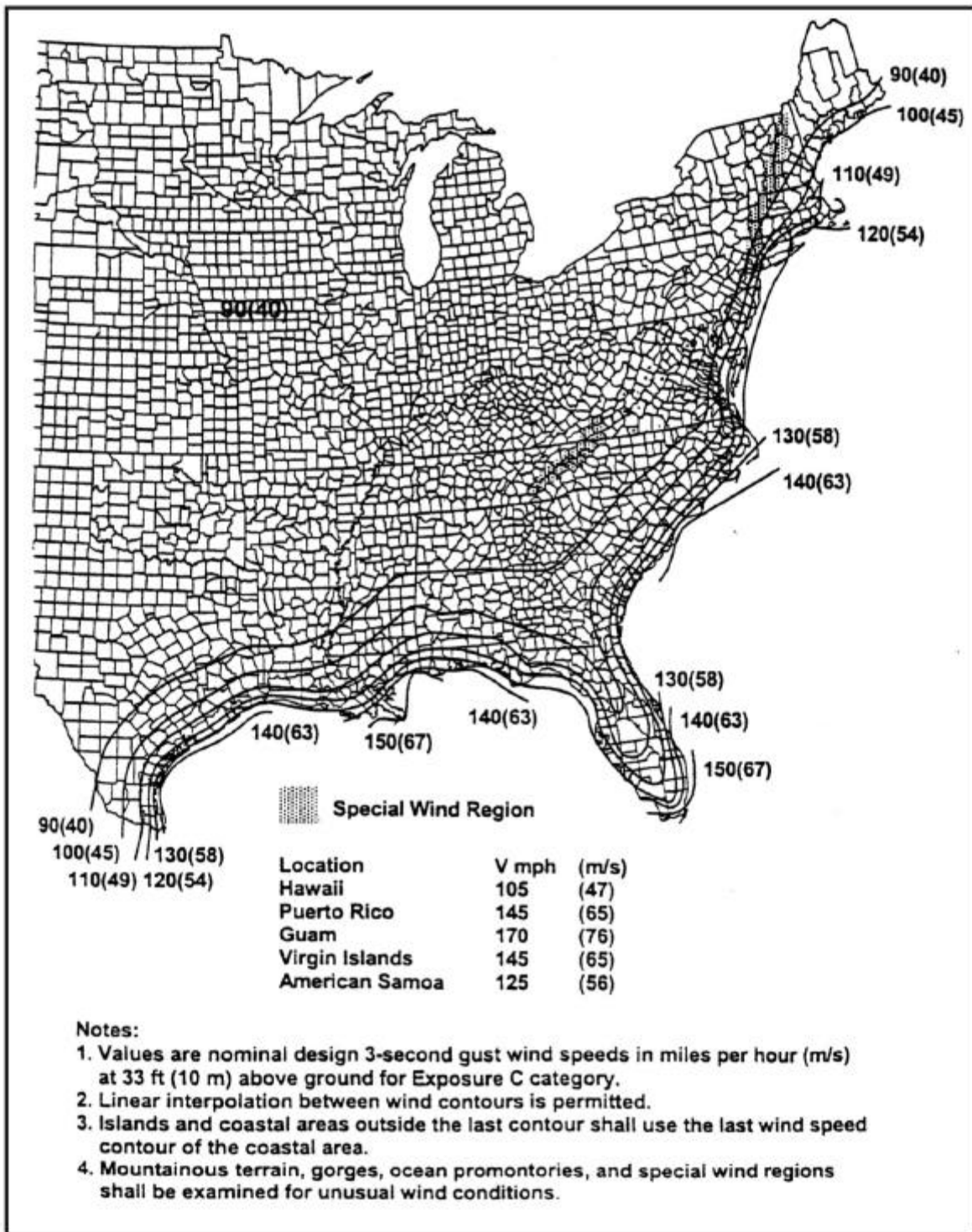


Figure 23. ASCE 7-98 gust wind speed map for 50 year return period (same as Figure 19).

Figure 23: ASCE 7-98 gust wind speed map for 50 year return period

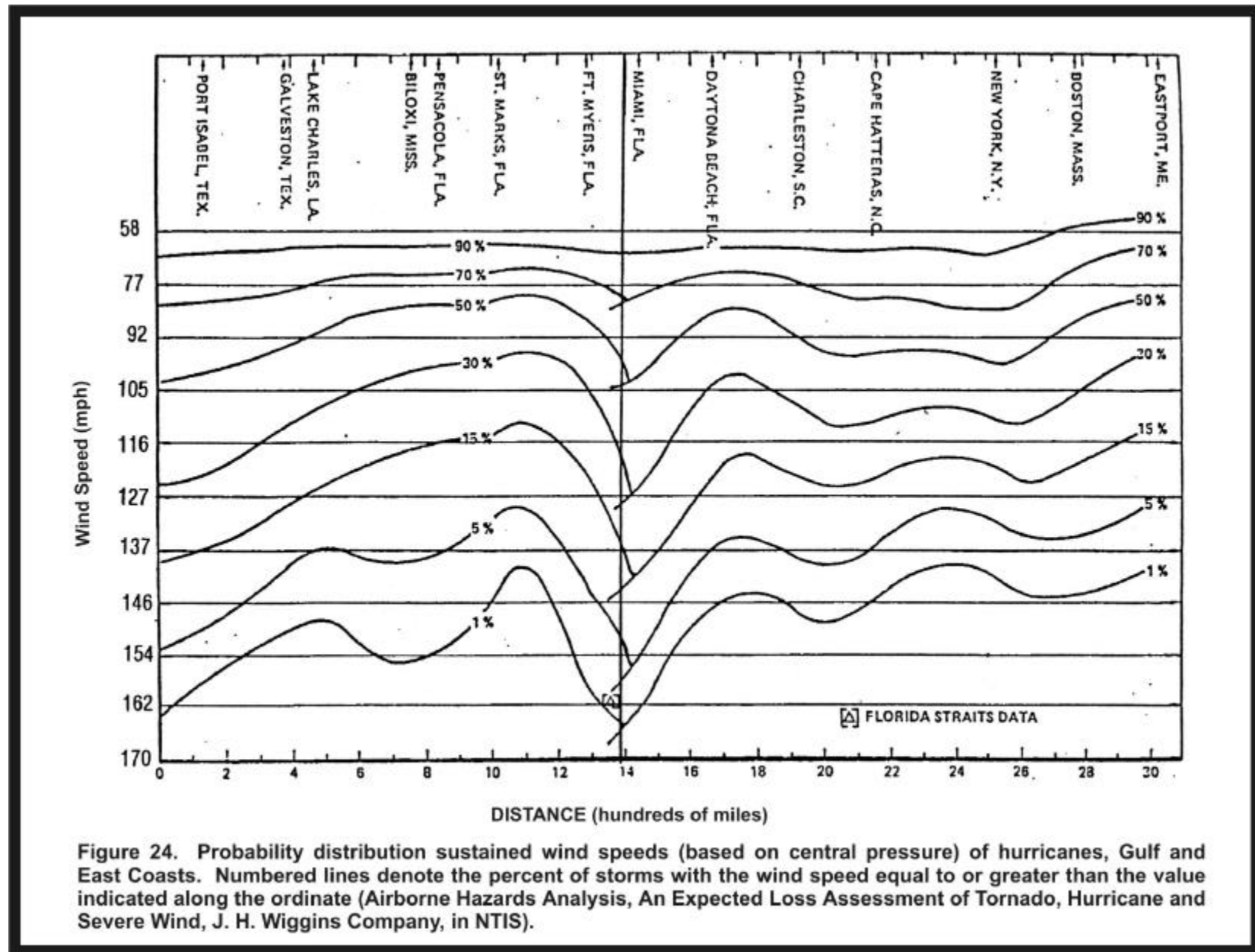


Figure 24. Probability distribution sustained wind speeds (based on central pressure) of hurricanes, Gulf and East Coasts. Numbered lines denote the percent of storms with the wind speed equal to or greater than the value indicated along the ordinate (Airborne Hazards Analysis, An Expected Loss Assessment of Tornado, Hurricane and Severe Wind, J. H. Wiggins Company, in NTIS).

Figure 24: Probability distribution of sustain wind speeds (based on central pressure) of hurricanes, Gulf and East Coasts

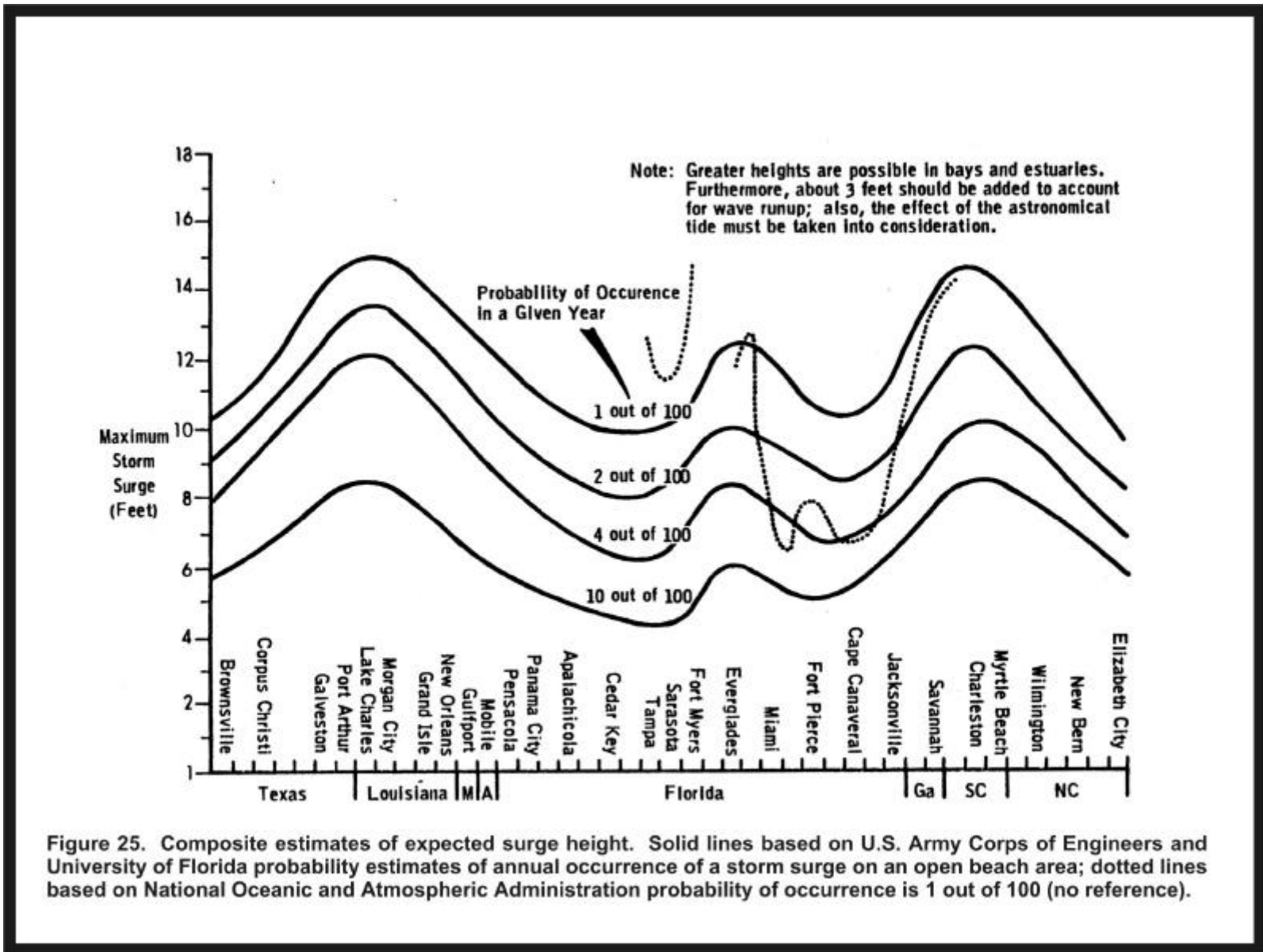
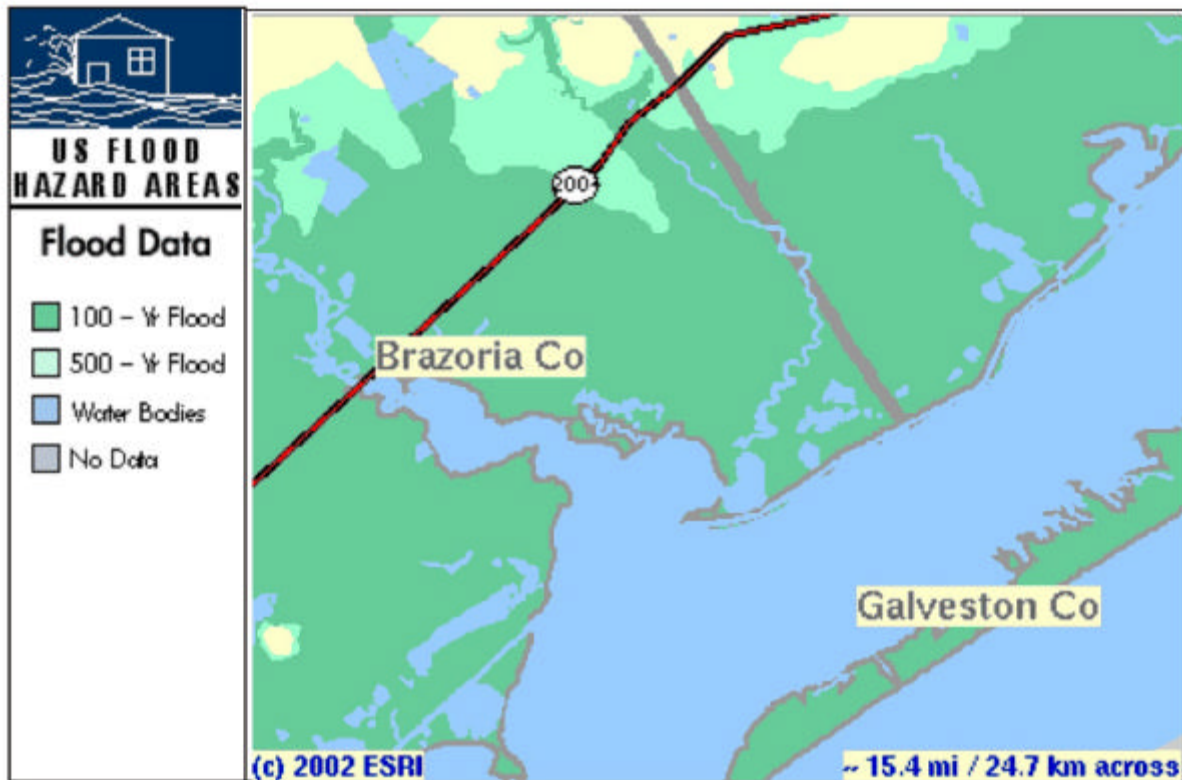


Figure 25: Composite estimates of expected surge height



Map Notes: The [FEMA Digital Q3 Flood Data](#) displayed on this Web site is developed by scanning the existing Flood Insurance Rate Map (FIRM) hardcopy and capturing a thematic overlay of flood risks. Digital Q3 Flood Data files contain only certain features from the FIRM hardcopy in effect at the time of scanning and do not replace the existing FIRM hardcopy maps. The Q3 Flood Data is being displayed here with basemap data from the GDT Dynamap/2000 data set. The Q3 Flood Data is currently available for approximately [1,200 counties](#) across the United States.

The maps displayed on this site should be considered an advisory tool for general hazard awareness, education, and flood plain management. The flood hazard maps displayed on this site **are not the legal document** to be used when making a single site flood hazard determination. For more information on these maps, please refer to the [Frequently Asked Questions](#) page.

Figure 26. Storm surge and headwater flooding extent for Brazoria County, Texas (<http://www.esri.com/hazards/makemap.html>).

Figure 26: Storm surge and headwater flooding extent for Brazoria County, Texas