

Figure 14. Hypothetical Water Distribution System Before the Natural Hazard Event  
(hydraulic pressure contours -- psi)

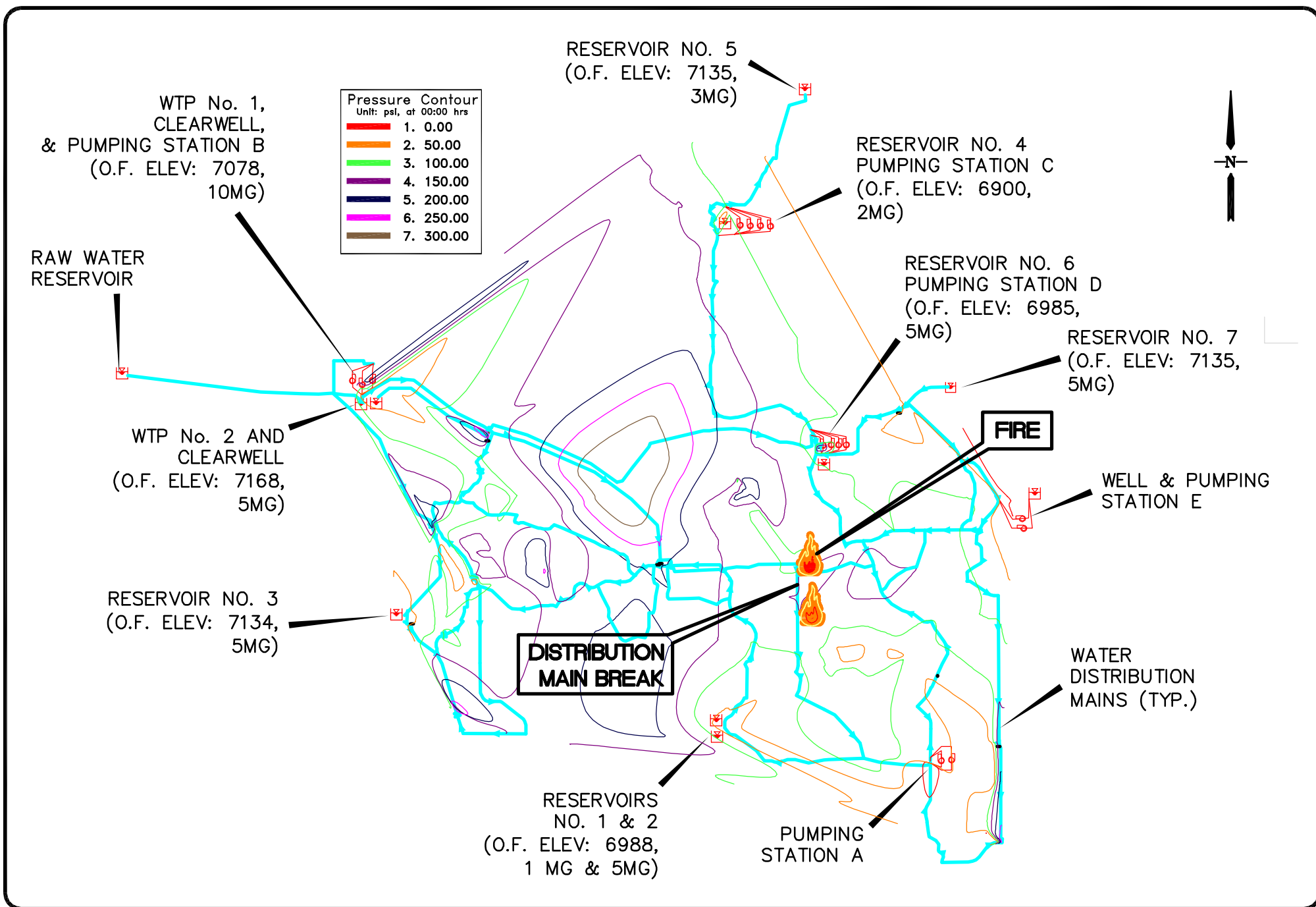


Figure 15. Hypothetical Flood/Scour Event as it Occurs  
(hydraulic pressure contours -- psi)

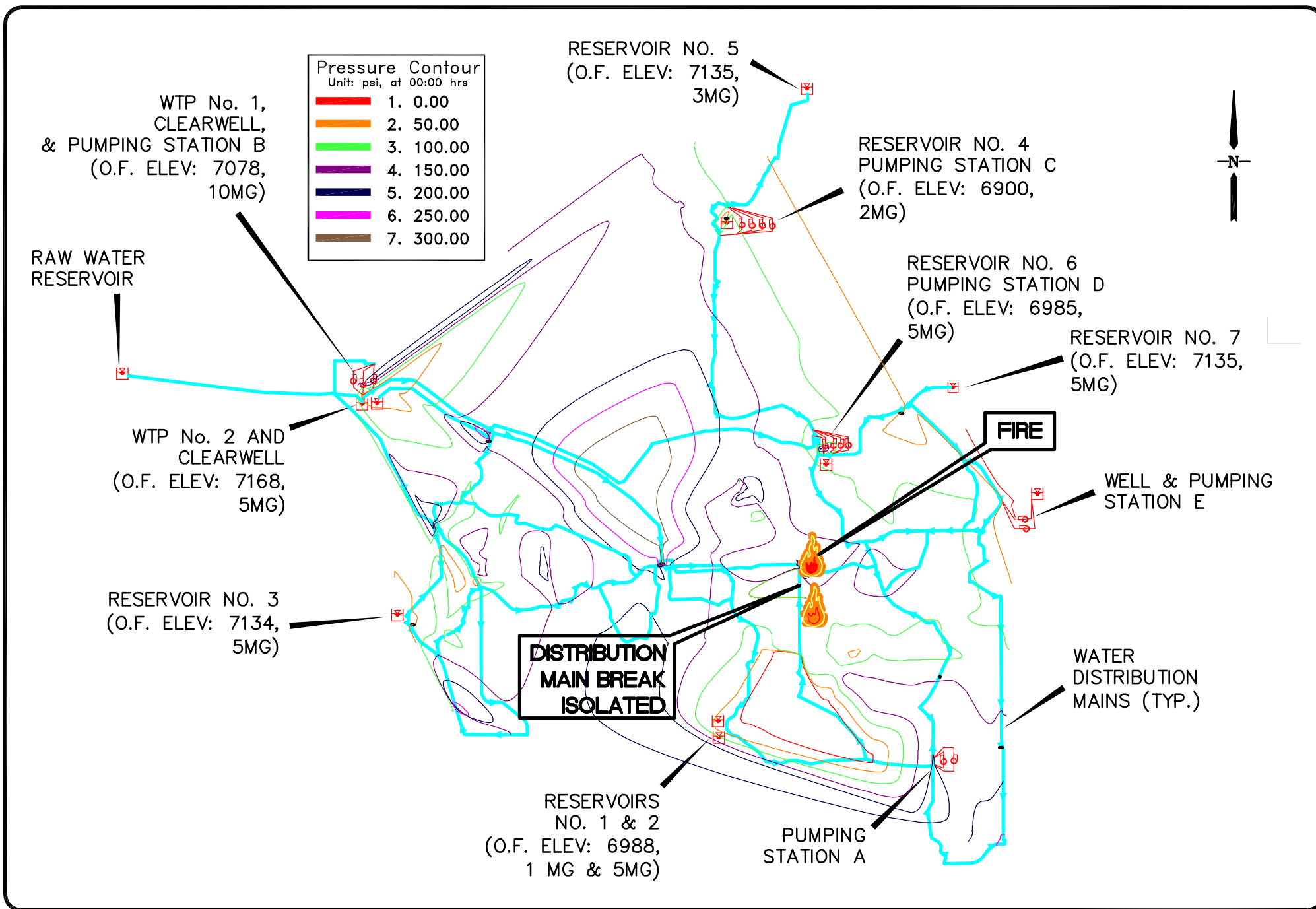


Figure 16. Water System Restoration for the Hypothetical Flood/Scour Event  
(hydraulic pressure contours -- psi)

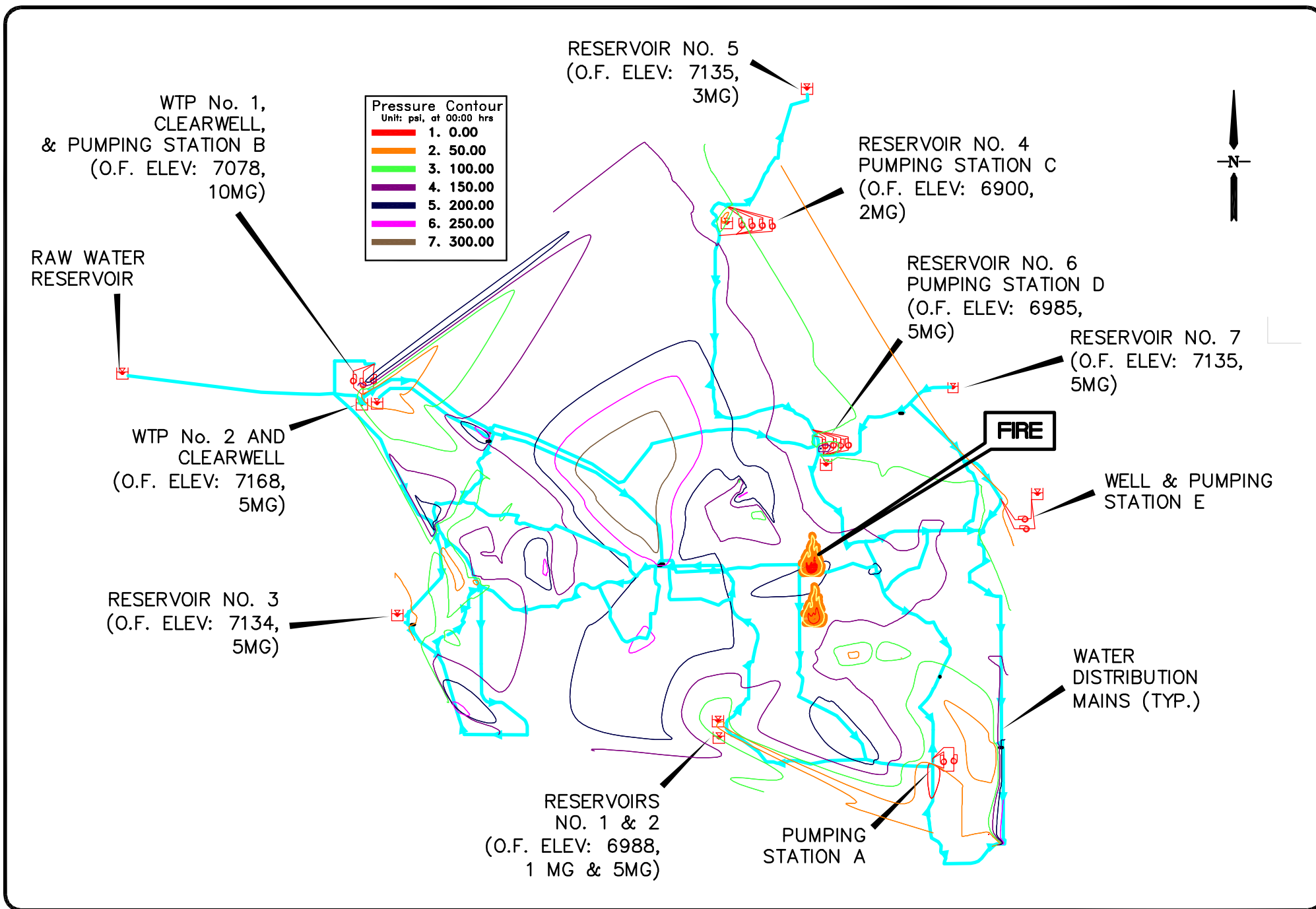


Figure 17. Water System Start-Up After the Hypothetical Flood/Scour Event  
(hydraulic pressure contours -- psi)

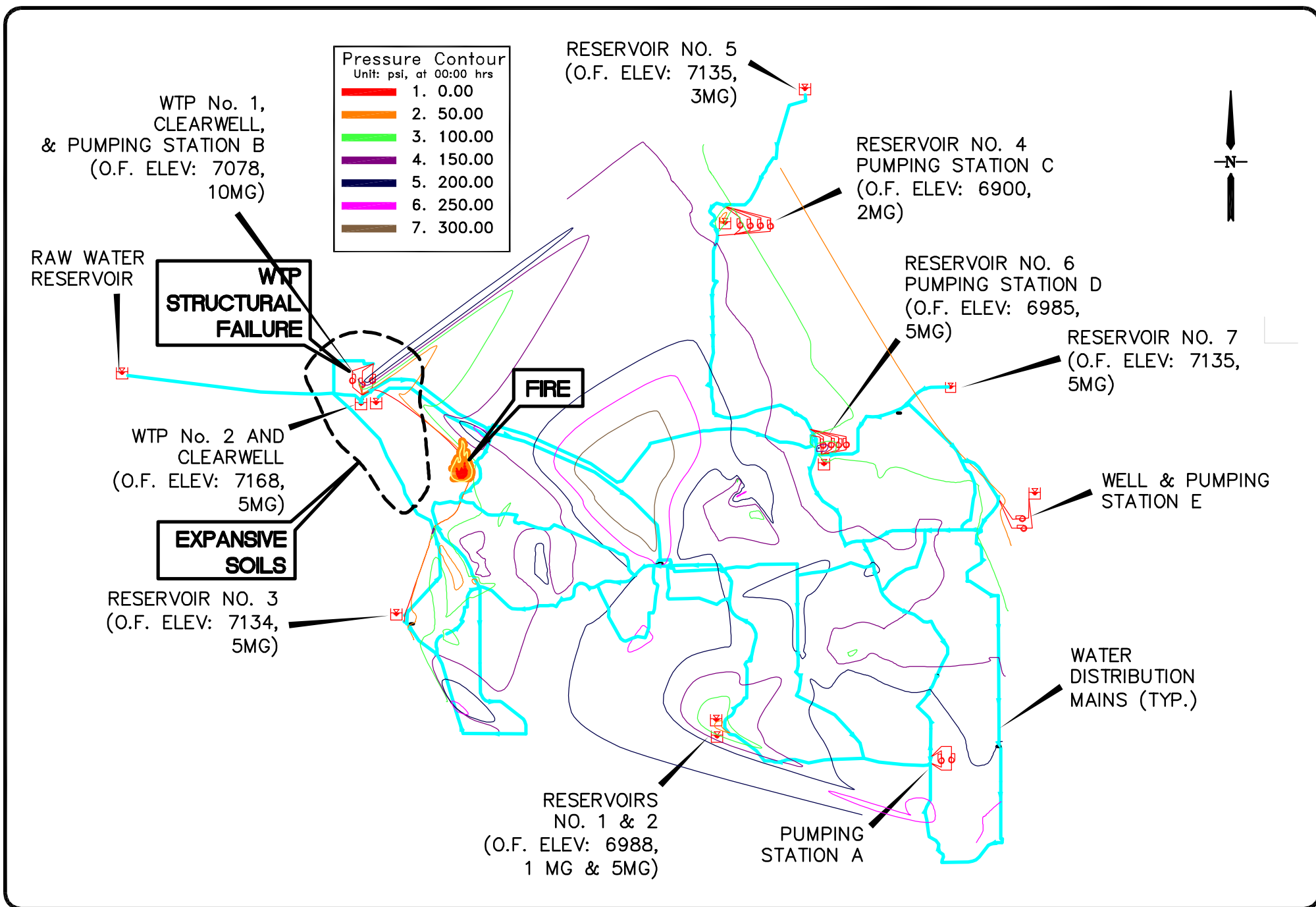


Figure 18. Hypothetical Expansive Soils Event as it Occurs  
(hydraulic pressure contours -- psi)

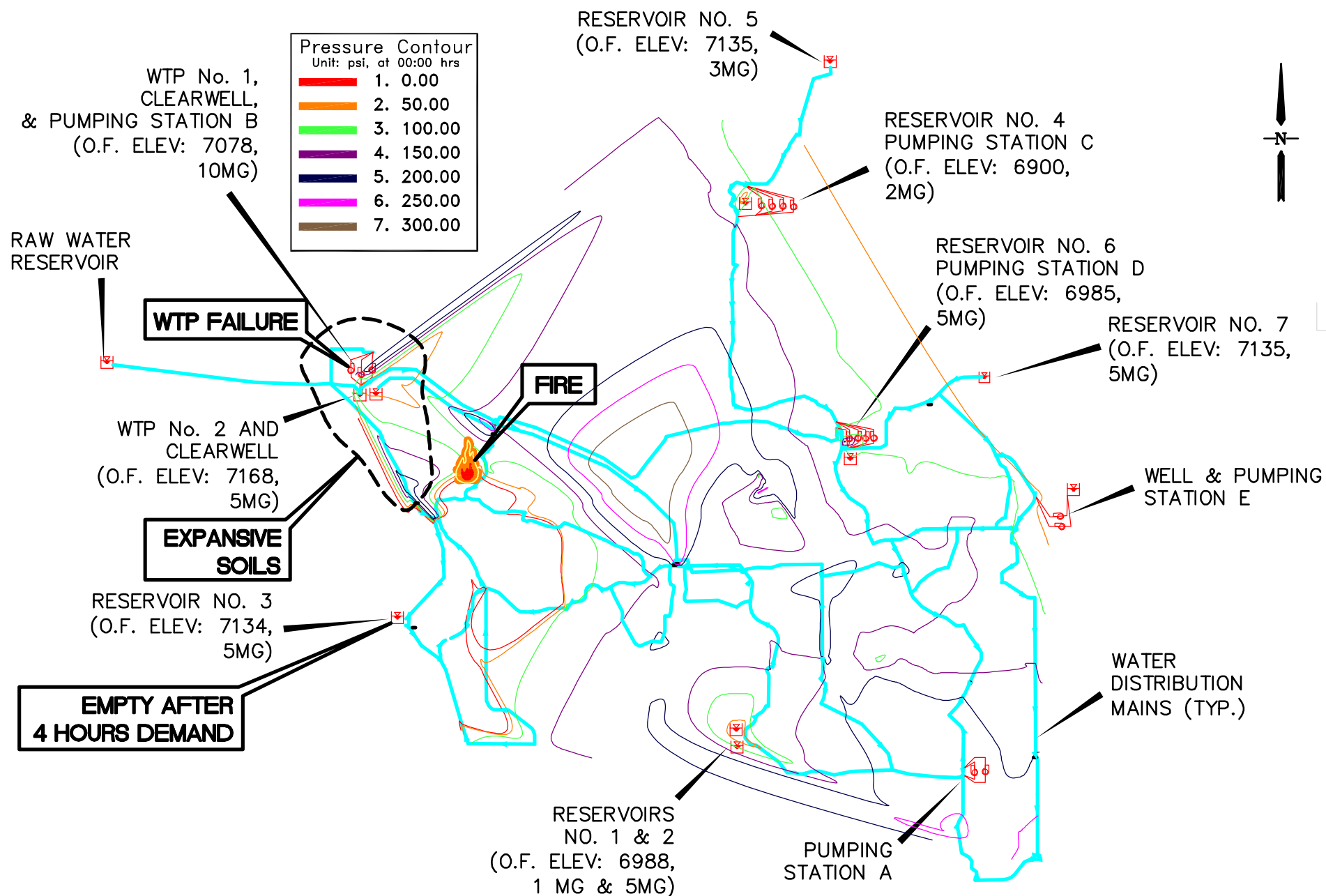


Figure 19. Continued System Failure for the Hypothetical Expansive Soils Event  
(hydraulic pressure contours -- psi)

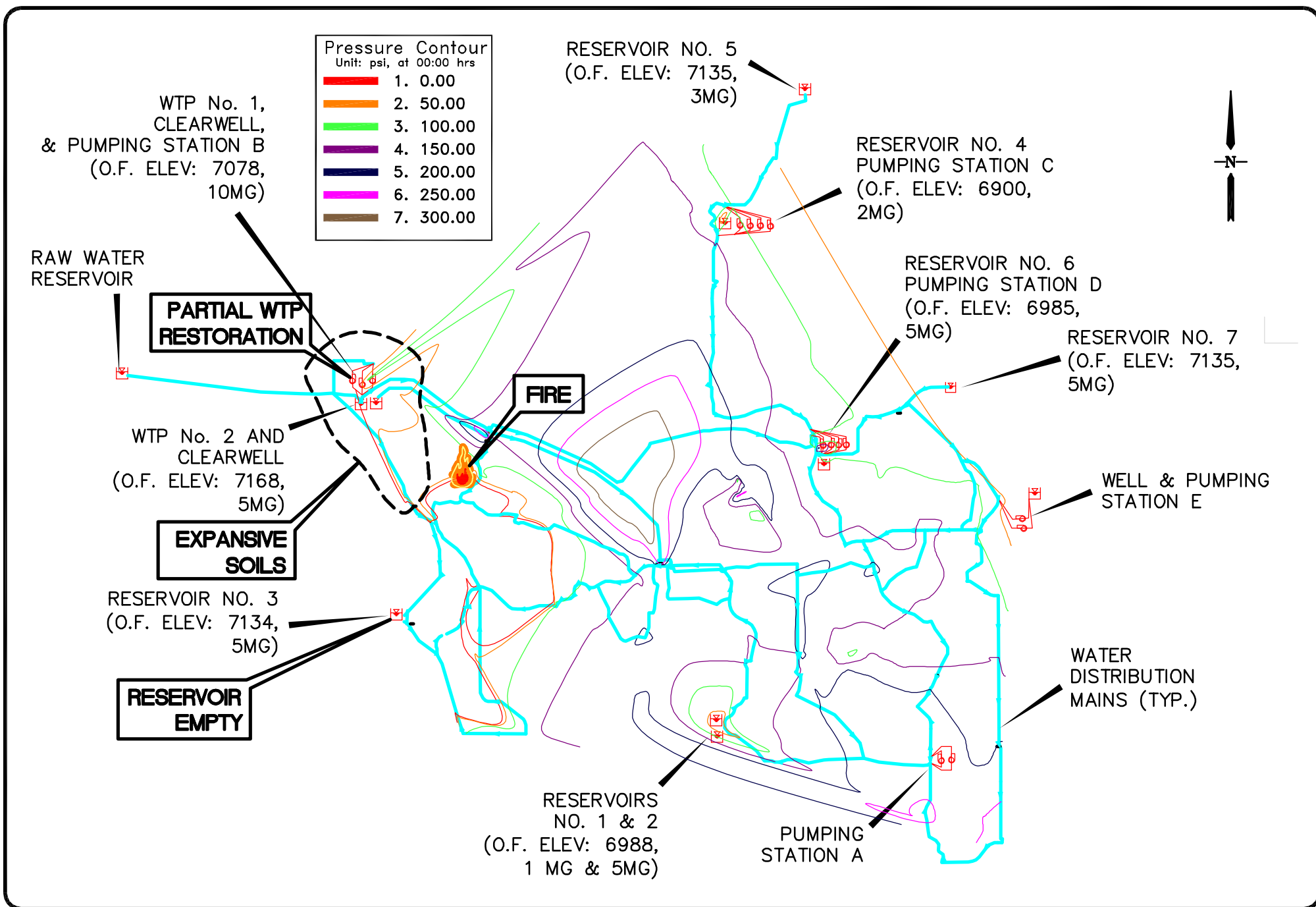


Figure 20. Water System Start-Up After the Hypothetical Expansive Soils Event  
(hydraulic pressure contours -- psi)



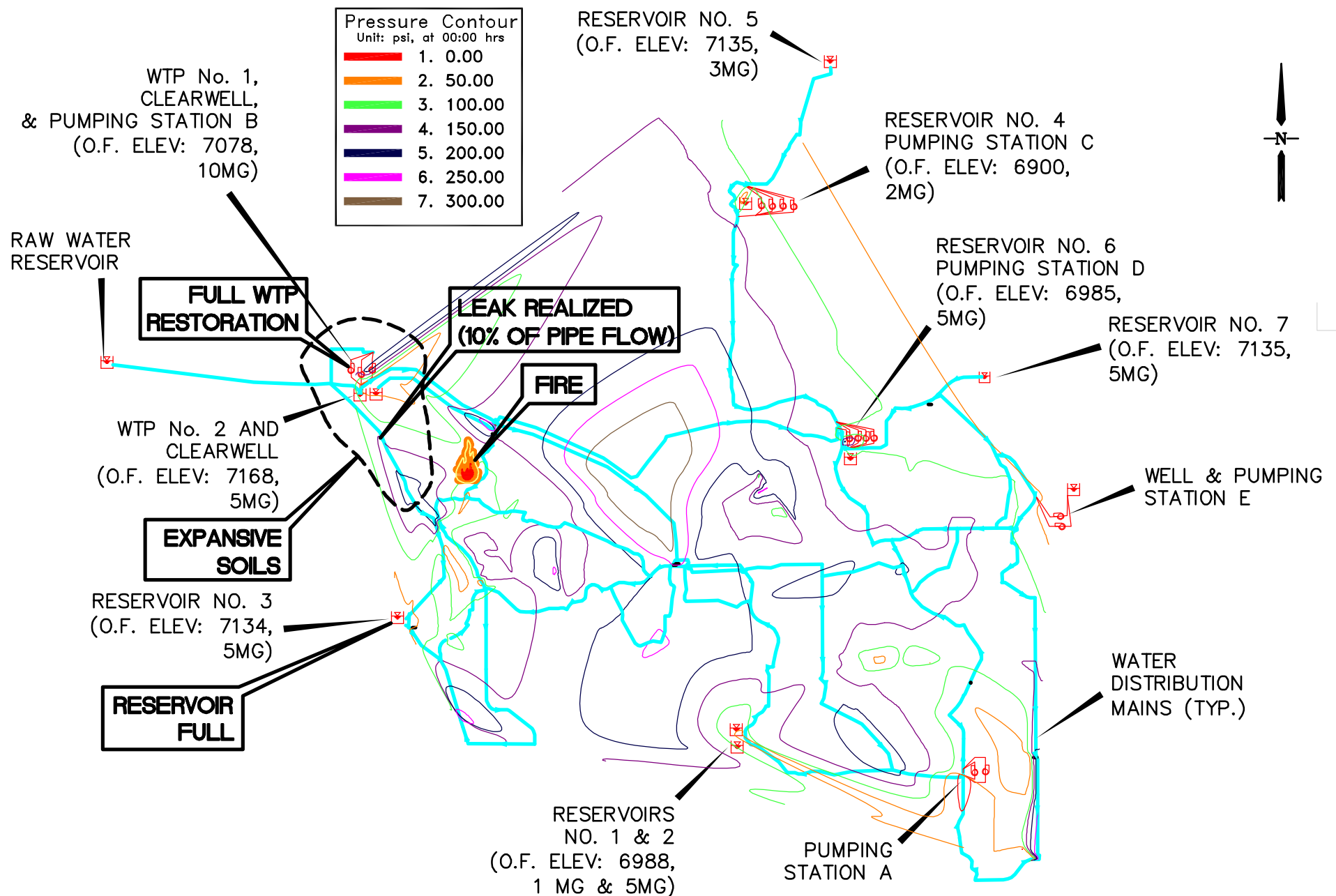


Figure 21. Water System Recovery After the Hypothetical Expansive Soils Event  
(hydraulic pressure contours - psi)



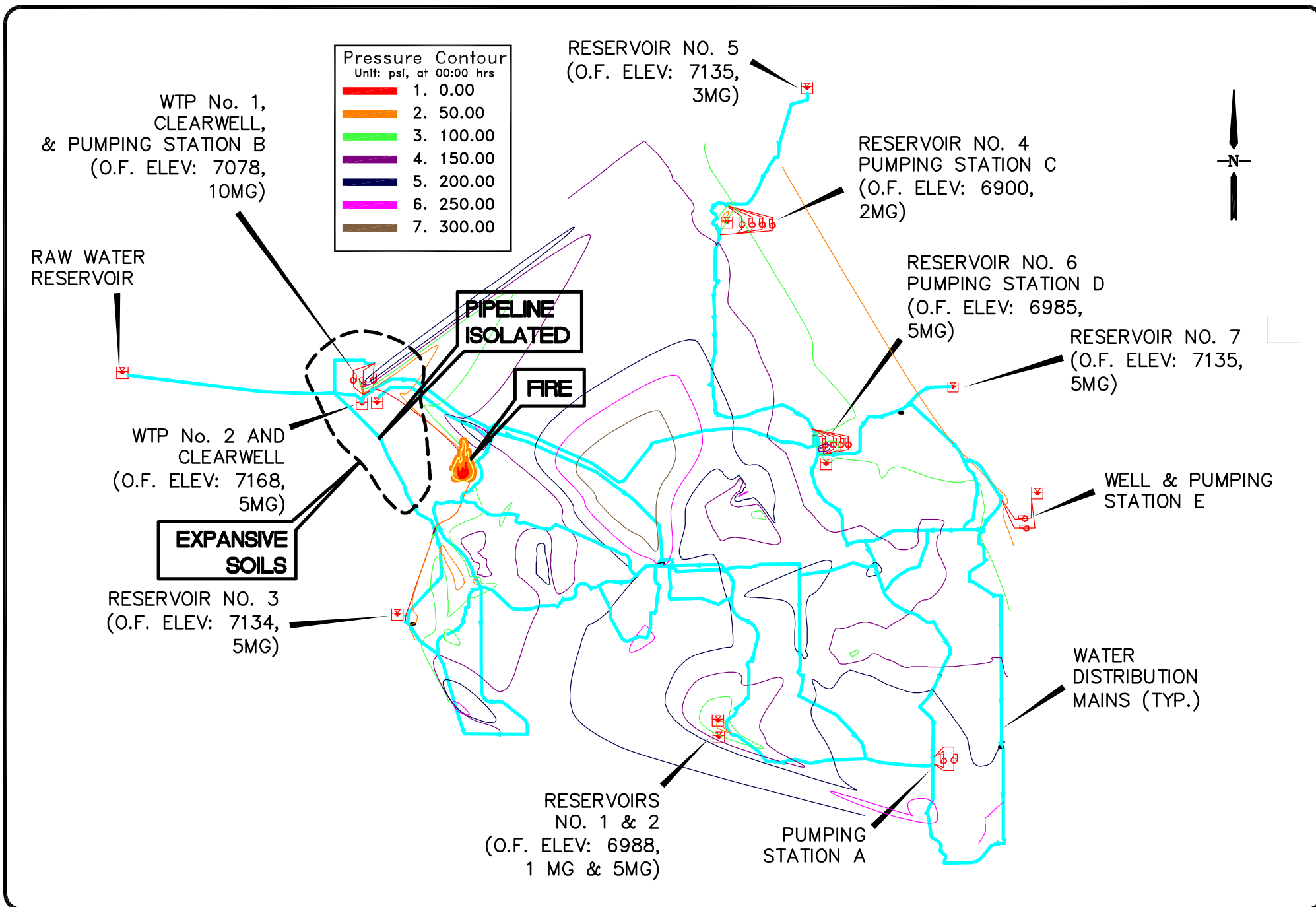


Figure 22. Water System Restoration After the Hypothetical Expansive Soils Event  
(hydraulic pressure contours -- psi)

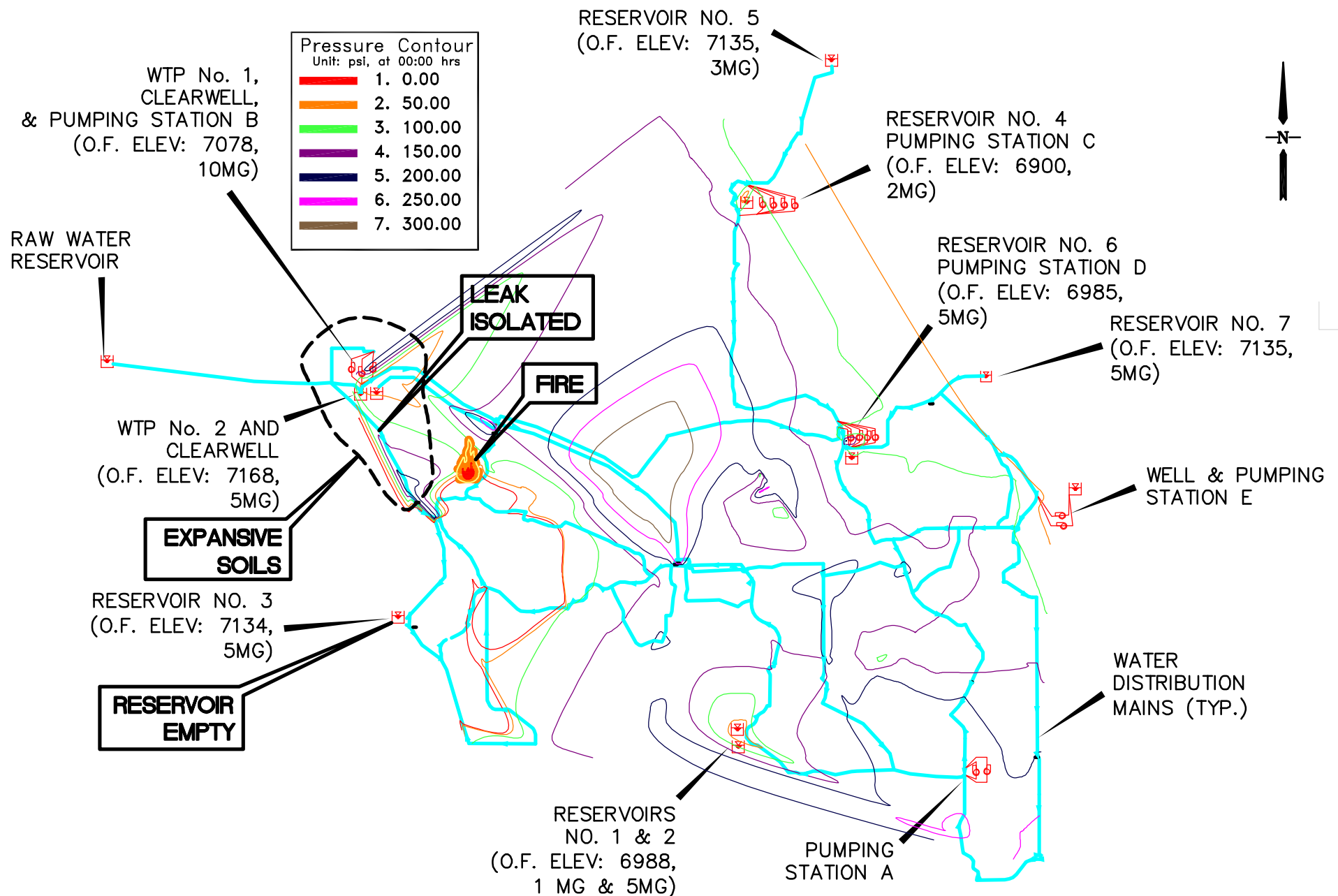


Figure 23. Final Water System Restoration After the Hypothetical Expansive Soils Event  
(hydraulic pressure contours -- psi)