

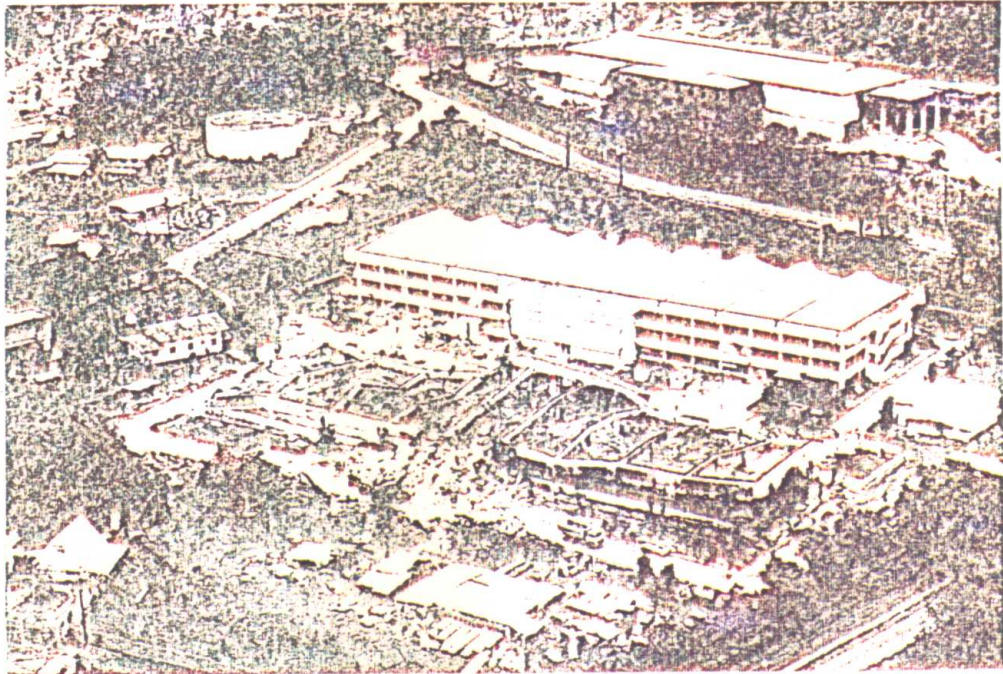


Photo 3.5 Failure of Hotel Nevada, 5-storey r.c. building ground floor collapsed. Typical irregular and brittle structural system with inclined walls exhibiting failure or heavy damage in other earthquake in the world (Montenegro, Yugoslavia earthquakes 1979, El Asnaw, Algeria earthquake, 1980).

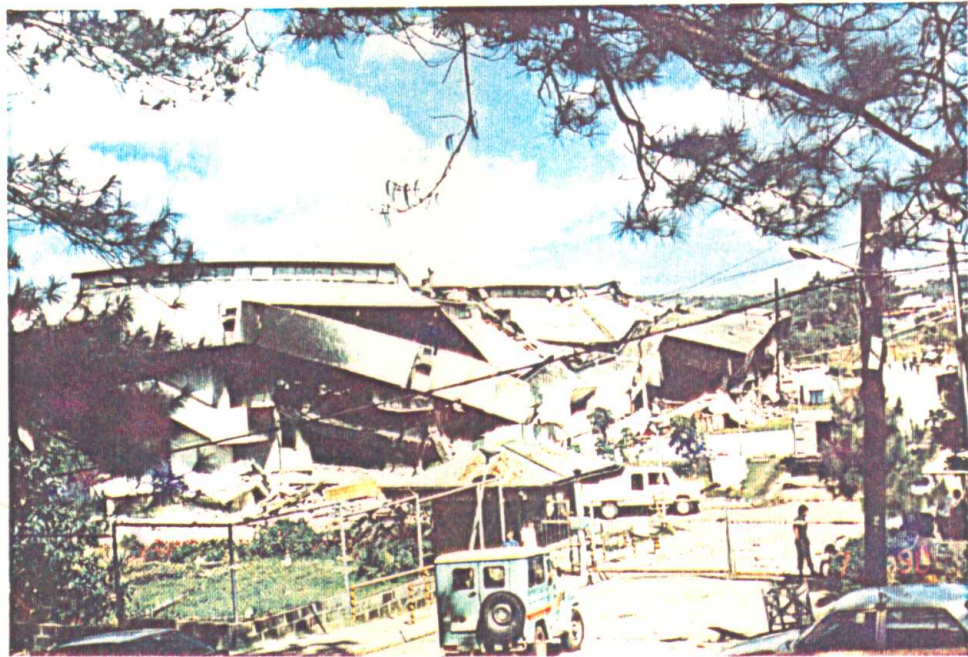


Photo 3.6 Hotel Queen Victoria 3-storey r.c. building with pronounced cantilivers. Typical high intensity vibrational effect producing intensive nonstructural and partial structural damage.





Photos 3.7 Aerial view on heavily damaged Export Processing Zone with collapsed and burned out. Brittle r.c. 4-storey manufacturing building and its twin severely damaged building.



Photos 3.8 Collapsed manufacturing r.c. 4-storey building in the Export Processing Zone. Typical brittle failure and inadequate proportioning of load carrying and floor structural system (deepo lintle beams).