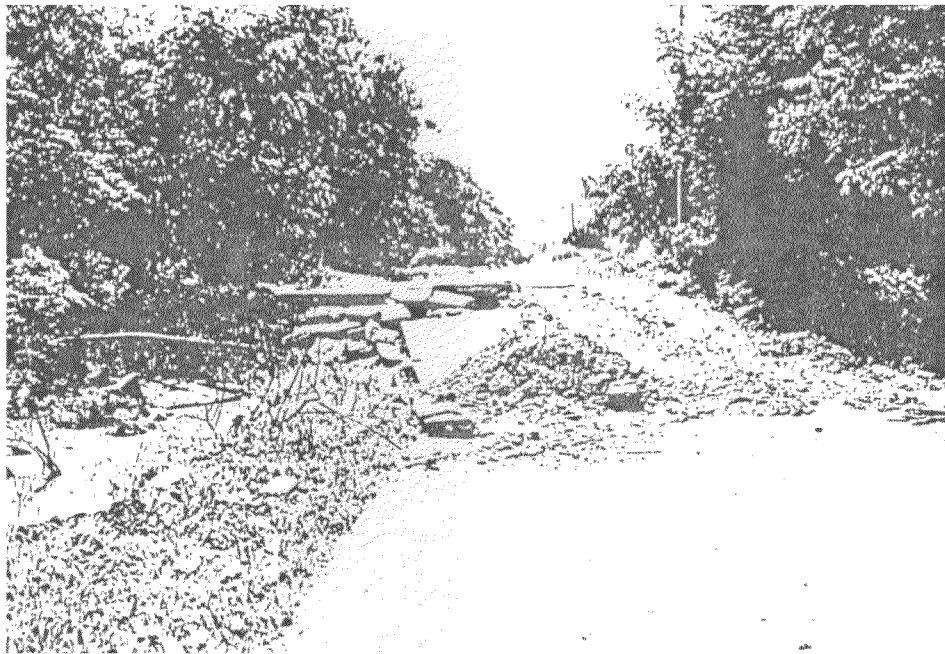
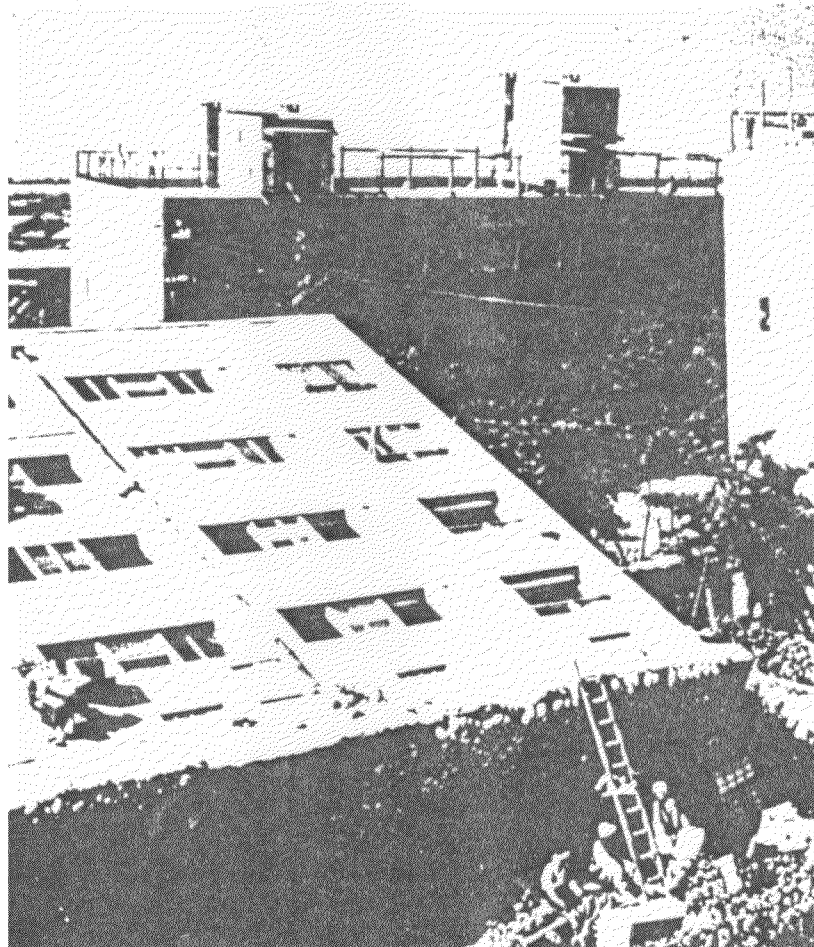
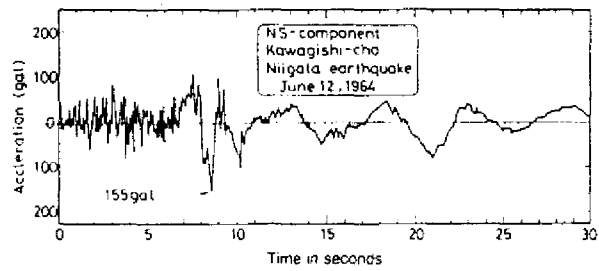




Photos 3.22 Large scale landslide cutting the Baguio-Bontoc Road (after 3).



Photos 3.23 Intensive settlement of the road, about 1.0 meter, on the Jct. CVR - Carranglan Road (after 3).



Photos 3.24 A strong acceleration time history ground motion of the 1964 Niigata, Japan Earthquake, recorded in one of the Kawagishi-cho apartment buildings, which are shown settled and tilted. The strong motion accelerograph record begins as a typical, high frequency, firm ground motion, but at about 7 seconds changes to a lower frequency, sloshing motion as the ground below the building partially or completely liquifies. (After Ronald F. Scott, 1990)

REFERENCES

1. **DENR - MGB Task Force** "Preliminary Earthquake and Geological Hazard Mapping of Baguio City", **Baguio City, August 8, 1990**
2. **Penafior, E. S.**, "Report on Assessment of the Effects of July 16 Earthquake in Pangasinan and La Union," Department of Environment and Natural Resources, Regional Office No. 1, San Fernando, 10 September, 1990.
3. "Report on July 16, 1990 Earthquake at Northern Luzon", **rchitectural Institute of Japan, Corporated by Tobishima Corporation, August 1990**
4. "Report on July 16, 1990 Earthquake at Northern Luzon", **rchitectural Institute of Japan, 10 October 1990 (in Japanese).**
5. "Preliminary Report of JSCE Reconnaissance Team on July 16, 1990 Luzon Earthquakes", **Japan Society of Civil lEngineers, August 22, 1990.**
6. **EQE Engineering**, "The July 16, 1990 Philippines Earthquake", **ugust 1990.**
7. "Liquefaction Studies Reveal Causes of Damage in Dagupan", **HIVOLCS Observer, July - September 1990**
8. **orres, R.C., at all**, "Fluvial Meander Sedimentation as Locus Determinant for liquefaction Damage in Dagupan City, Pangasinan", **Preprint received November 1990).**
9. **Tokimatsu, K.**, "Preliminary Report on Liquefaction-Induced Damage during the Philippines Earthquake of July 16, 1990 (preprint received November 1990)
10. **Midorikawa, S.**, "Ground Motions and Site Conditions in Affected Area by the Luzon, Philippines Earthquake of July 16, 1990." **(Preprint received November 1990).**
11. **Scott, R.G.**, "Liquefaction", **Engineering and Science, California Institute of Technology, winter 1990, volume LIII, November 2, pp. 21-25 Pasadena.**
12. **Finley, D.**, "System Designed for Issueing Landslide Alerts in the San Francisco Bay Area", **Earthquakes and Volcanoes, Volume 19, Number 5, 1987, pp. 171-173.**
13. **Shibata, A.**, "Prediction of the Probability of Earthquake Damage to Reinforced Concrete Building Groups in a City", **Proceedings 7th WCEE, Istanbul, Turkey, 1980.**

14. **Petrovski, J., "Post Earthquake Damage Evaluation", Chapter 2 of the Manual of Damage Evaluation and Assessment of Seismic Risk of Existing Buildings, UNDP/UNIDO Project "Building Construction Under Seismic Conditions in the Balkan Region, October 1983.**
15. **Petrovski, J., "Engineering Measures for Earthquake Risk Reduction in the Arab Countries", Chapter 8 in the "Assessment and Mitigation of Earthquake Risk in the Arab Region", UNESCO, 1983, pp. 173-218.**
16. **Petrovski, J., and Milutinovic, Z., "Vulnerability and Seismic Risk Analysis for Earthquake Disaster Management", IZIIS, University of Skopje, Report IZIIS 90-124, Skopje, June 1990.**
17. **Petrovski, J., at all, "Determination of Seismic Design Criteria for Repair and Strengthening of Earthquake Damaged Buildings" Volume X, IZIIS, University of Skopje, Report IZI-Is 82-55-10, Skopje, June, 1982.**
18. **National Structural Code of Philippines, Volume 1, Third Edition September 1988.**
19. **Structural Design Data and Specifications, Abelardo B. Carillo, 6th Edition, KEN Incorporated, May 1983.**
20. **Basic Concepts of Seismic Codes, Volume 1, The International Association for Earthquake Engineering, Tokyo, 1980.**
21. **Aoyama, H., "Outline of Earthquake Provisions in the Recently Revised Japanese Building Code", Tokyo University, Japan.**
22. **International Engineering Consultants Associations (Japan), "Preliminary Investigation Report on Earthquake Damaged Roads and Bridges in Nueva Ecija, Tarlac, La Union, Benguet, Pangasinan", August 1990.**