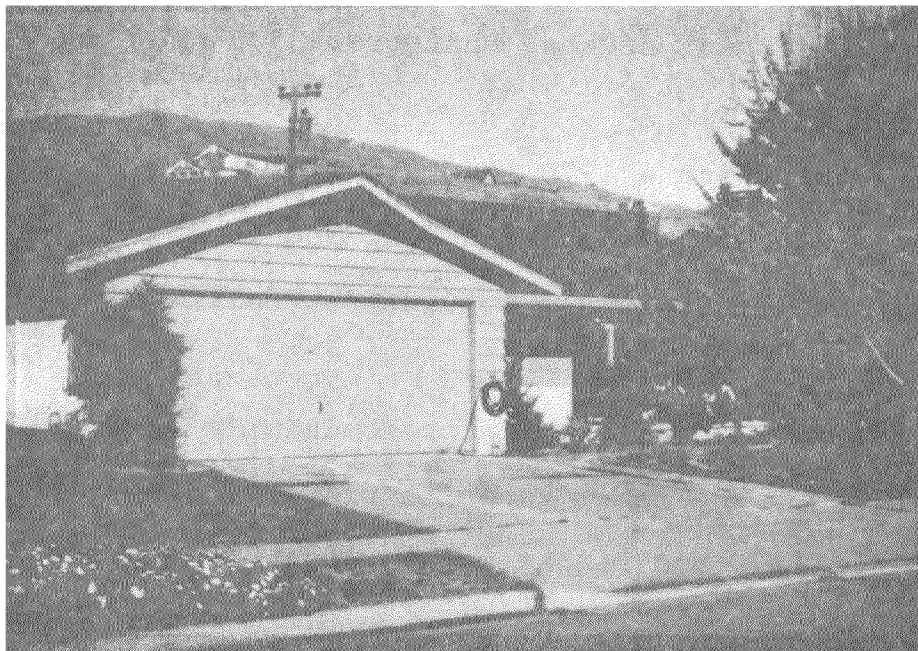


Hayward (Union City to Pinole)

The northern section of the Hayward fault zone runs through densely populated and diverse sections of the East Bay. The zone includes parts of Hayward, Union City, Oakland, Berkeley and Pinole. Hayward and Union City house a middle-class population that lives adjacent to the East Bay Hills. Oakland contains a low-income neighborhood with a large minority population. Pinole is an industrial city, physically separated from the other East Bay cities, and is dominated by working-class residents. Berkeley is the most diverse city in this zone and the variance in the data may be due in part to the influence of the student population at the University of California. Housing prices throughout the zone range from a low of \$50,000 in East Oakland to \$500,000 in the Berkeley Hills. Educational levels in the zone range from a low of 10.3 to 17 years, the highest category reported by the Bureau of Census. 1970 income levels reveal a similar range: \$1,078 to \$17,426. The employment characteristics showed that the proportion of blue-collar workers varies between 0.9% to 46.9% in the tracts.

There was an assortment of housing types in the zone. Older, single-family housing and duplexes are found in a deteriorating section of East Oakland. Housing in Union City (Photograph 35) is similar to housing found in Hayward, where 1981 prices average \$110,000 and range between \$60,000 and \$300,000.



Photograph 35 shows housing found in the eastern portions of Union City.