

APPENDIX 1

GLOSSARY

When the following words are used in this plan, they have the following meanings:

Aircraft accident

An occurrence during the operation of an aircraft in which any person involved suffers death or serious injury or in which the aircraft receives substantial damage.

Aircraft incident

An occurrence, other than an accident, associated with the operation of an aircraft, which affects or could affect continued safe operation if not corrected. An incident does not result in serious injury to persons or substantial damage to aircraft.

Aircraft operator

A person, organization or enterprise engaged in or offering to engage in aircraft operations.

Airline-coordinator

A representative authority delegated by an airline to represent its responsibilities during an emergency involving its aircraft or property.

Airport emergency plan

Procedures for coordinating the response of airport services with other agencies in the surrounding community which could assist in responding to an emergency occurring on, or in the vicinity of, the airport.

Airport emergency exercise

A test of the emergency plan and review of the results in order to improve the effectiveness of the plan.

Airport manager

The individual having managerial responsibility for the operation and safety of an airport. The manager may have administrative control over airport rescue and fire

fighting services, but normally does not exercise authority over operational rescue and fire matters.

Air side

The movement area of an aerodrome, adjacent terrain and buildings or portions thereof, access to which is controlled.

Air traffic service

A generic term meaning, variously, flight information service, alerting service, air traffic advisory service, air traffic control, area control, approach control, or aerodrome control services.

Airport control tower

A facility established to provide air traffic control service for airport traffic.

Alarm and dispatch center

A facility in use in many metropolitan areas for the rapid dispatch of emergency services. The facility is usually contacted by the general public using a simple three-digit telephone number.

Casualty

A person killed or injured.

Care area

Location where first medical care is given to injured.

Collection area

Location where seriously injured are collected initially.

Command Post (CP)

The location at the scene of an emergency where the on-scene commander is located and where command, coordination, control, and communications are centralized.

Dangerous goods

This term is used internationally by all modes of transport, but it is synonymous with 'hazardous materials' and 'restricted articles'. The term includes explosives, compressed or liquefied gases (which may be flammable or toxic), flammable liquids or solids, oxidizers, poisonous substances, infectious substances, radioactive material or corrosives.

Designated passenger holding area

Location to which the apparently uninjured aircraft occupants are transported.

Emergency operations center

A designated area on the airport used in supporting and coordinating operations at airport emergencies.

Exercise

Testing of the airport emergency plan and review of the results in order to improve the effectiveness of the plan.

Forensic doctor

(Medical examiner/coroner) A public officer whose principle duty is to investigate and inquire by an inquest into the cause of any death where there is reason to suppose that the death is not due to natural causes. The data acquired deals with the relation and application of medical facts to legal questions.

Full-scale emergency exercise

Assembling and utilization of all resources that would be available and used in a real emergency.

Grid map

A map of an area overlaid with a grid system of rectangular coordinates that are used to identify ground locations where no other landmarks exist.

Investigation

A process conducted for the purpose of accident prevention, which includes gathering and analysis of information, the drawing of the conclusions, including the

determination of cause(s) and, when appropriate, the making of safety recommendations.

Medical transportation area

That portion of the triage area where injured persons are staged for transportation to medical facilities under the direct supervision of a medical transportation officer.

Moulage

A reproduction of a skin lesion, tumor, wound, or other pathological state which is applied to volunteer victims to simulate realistic injuries in emergency exercises.

Movement area

That part of an aerodrome to be used for the take-off, landing and taxing of aircraft, consisting of the manoeuvring area and apron(s).

On-scene commander

Person designated to take charge of the over-all emergency operation.

Rendezvous point

A pre-arranged reference point, i.e. road junction, cross-road or other specified place, to which personnel/vehicles responding to an emergency situation initially proceed to receive directions to staging areas and/or the accident/incident site.

Stabilization

Use of medical measures used to restore basic physiologic equilibrium to a patient to insure survival and facilitate future definitive care.

Staging area

A prearranged, strategically placed area where support response personnel, vehicles and other equipment can be held in readiness for use during an emergency.

Tabletop exercise

The simplest and least expensive type of drill to stage. Used to test the integration and capability of emergency response resources, it is a simple tool for planning, critiquing, and updating various responses before trying them in the field.

Tagging

Method used to identify casualties as requiring immediate care (Priority I), delayed care (Priority II) minor care (Priority III), or as deceased.

Triage

The sorting of casualties at an emergency according to the nature and severity of their injuries.

Triage area

Location where triage operations are performed.

Triage tag

A tag used in the classification of casualties according to the nature and severity of their injuries.

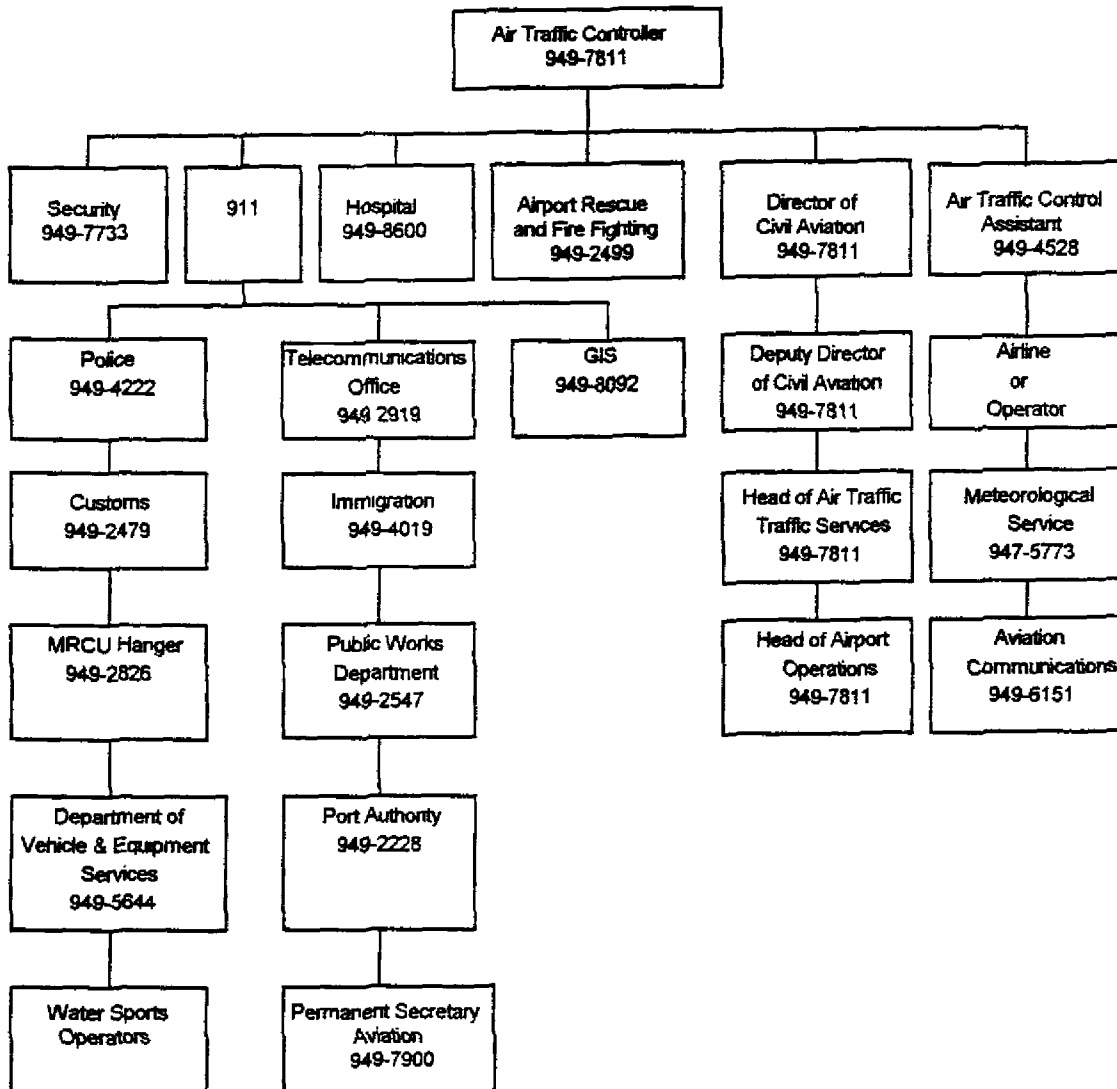
APPENDIX 2

Owen Roberts International Airport Air Traffic Control Aircraft Emergency Notification List

EMERGENCY STATUS:		DATE:		24 HOUR LOCAL TIME:
AIRCRAFT CALLSIGN:		TYPE:	REGISTRATION:	OPERATOR:
TIME	NOTIFY	PHONE	PERSON ADVISED	REMARKS
1	FIRE SERVICE	DCT		
2	HOSPITAL	DCT		
3	911	DCT		
4	SECURITY	CAA RDO.		
5	DCA (Richard Smith)	DCT (H) 947 1008		
6	DDCA (David Frederick)	DCT (H) 947 1108		
7	HATS (Jeremy Jackson)	DCT (H) 947 6167		
8	HAO (Kerith McCoy)	DCT (H) 949 3834		
9	ATCA	DCT		The duty ATCA shall notify the services listed from 10-12
10	MET	947 5773		
11	AIRLINE/OPERATOR	Notify via telephone		
12	AVCOM	949 6151		

- NB:**
- (1) If an Accident/incident occurs outside of normal working hours, individual home telephone numbers are listed in Section 1 of the Cayman Islands Airports, Airport Emergency Plan.
 - (2) Upon receiving an emergency notification message from Gerrard-Smith Tower, the duty controller shall notify the DCA or his representative.
 - (3) In the absence of a duty Air Traffic Control Assistant, the duty Air Traffic Controller shall notify the Airline or Operator, the Meteorological Service and Aviation Communications.
 - (4) 9-1-1 operator will notify the Police, Government's Telecommunications Office, G.I.S., Customs, Immigration, M.R.C.U., P.W.D., Dept. of Vehicle & Equipment Services, Port Authority, Water Sports Operators and the Permanent Secretary for Aviation. 9-1-1 will inform ATC when all services are notified.

Owen Roberts International Aircraft Emergency Notification Flow Control Chart

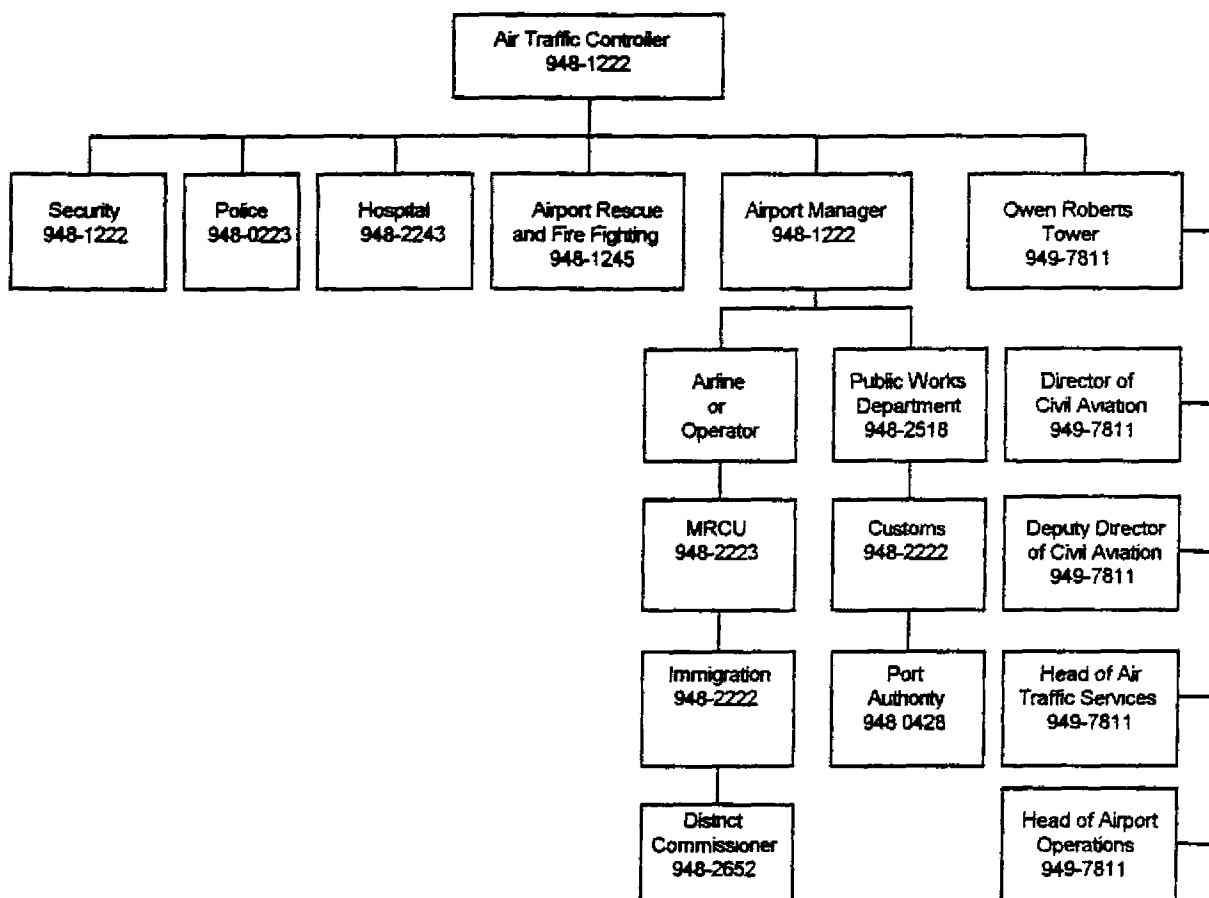


**Gerrard-Smith International Airport
Air Traffic Control Aircraft Emergency
Notification List**

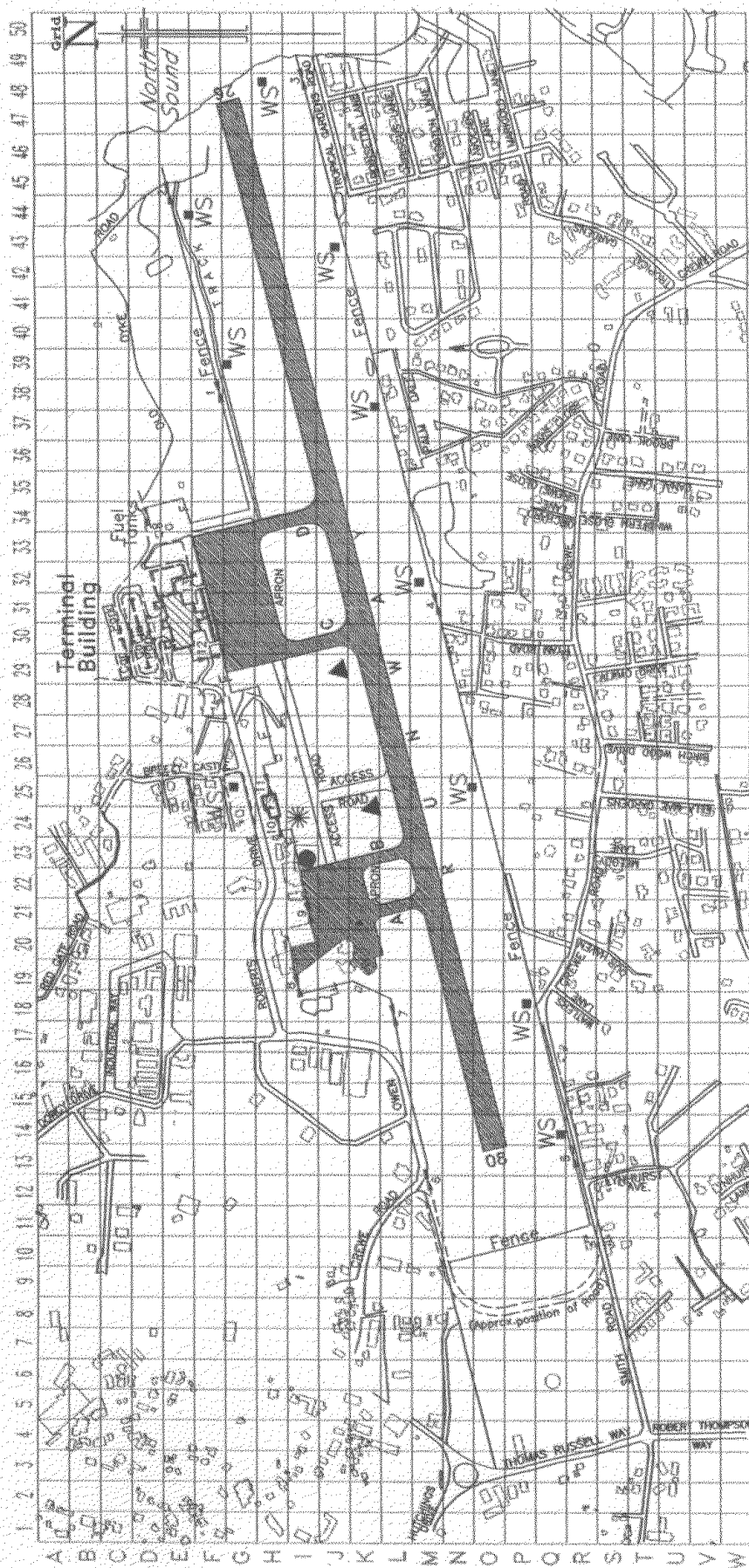
EMERGENCY STATUS:		DATE:		24 HOUR LOCAL TIME:	
AIRCRAFT CALLSIGN:		TYPE:	REGISTRATION:	OPERATOR:	
TIME	NOTIFY	PHONE	PERSON ADVISED	REMARKS	
1	FIRE SERVICE	DCT/948 1245			
2	POLICE	DCT/948 0223			
3	HOSPITAL	DCT/948 2243			
4	SECURITY	CAA RDO.			
5	AIRPORT MANAGER	(W) 948-1222 (H) 948 2406			
6	AIRLINE/OPERATOR	Notify via Telephone			
7	OWEN ROBERTS TWR.	DCT/949-7811			
8	PWD	(W) 948 2518 (H) 948 2471			
9	MRCU	(W) 948 2223 (H) 948 2645			
10	CUSTOMS	(W) 948 2222 (H) 948 1412			
11	IMMIGRATION	(W) 948 2222 (H) 948 1572			
12	PORT AUTHORITY	(W) 948 0428 (H) 948 2542			
13	DISTRICT COMM.	(W) 948 2652 (H) 948 1560			
14	OFF DUTY ATCO'S	Notify via Telephone			

- NB:**
- (1) If an Accident/incident occurs outside of normal working hours, individual home telephone numbers are listed in Section 1 of the Airport Emergency Plan.
 - (2) In the absence of the Airport Manager, the duty Air Traffic Controller shall notify all the services listed on this form.
 - (3) Upon receiving an emergency notification message, off duty controllers shall report to work and assist accordingly.

**Gerrard-Smith International Airport
Aircraft Emergency Notification Flow Control Chart**



OWEN ROBERTS INTERNATIONAL AIRPORT



LEGEND

- Buildings, Topo detail: Fences etc.
- Emergency Gate
- Roads
- Staging Area
- Fire Station
- Stand-by Point
- ATC Tower
- WS Water Supply

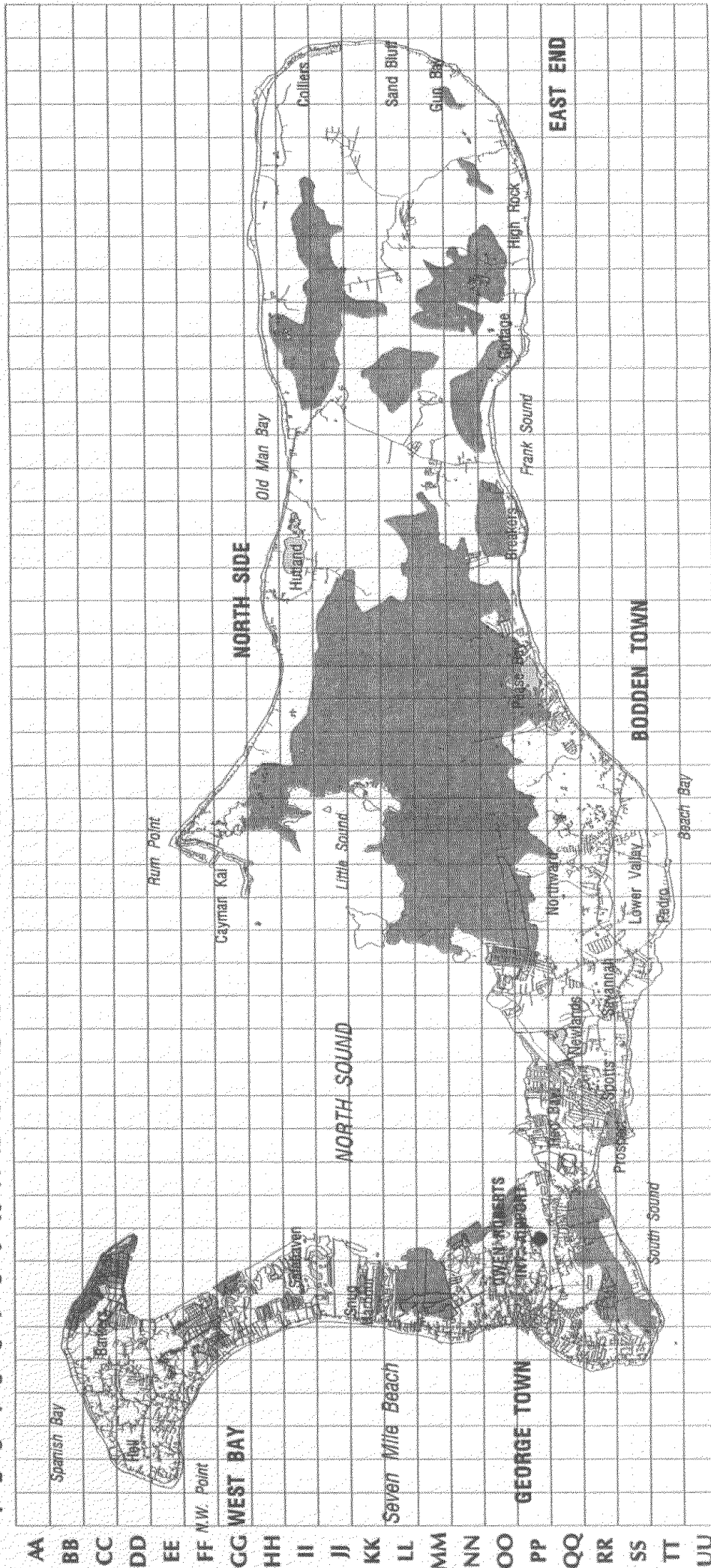


SCALE: 1:10,000

Job No. J1599
 Plan No. C1200
 Produced by Land Information System (LIS)
 Publication Date: 9.9.97

GRAND CAYMAN

1 2 3 4 5 6 7 8 9 10 11 12 13 14 15 16 17 18 19 20 21 22 23 24 25 26 27 28 29 30 31 32 33 34 35 36 37 38 39 40 41 42 43 44 45 46



SCALE 1:105,000