



FIGURE 63.—Rupture across the San José Rosario subdivision Fault with 13 cm vertical and 5 cm right-lateral displacements (Zone 19)

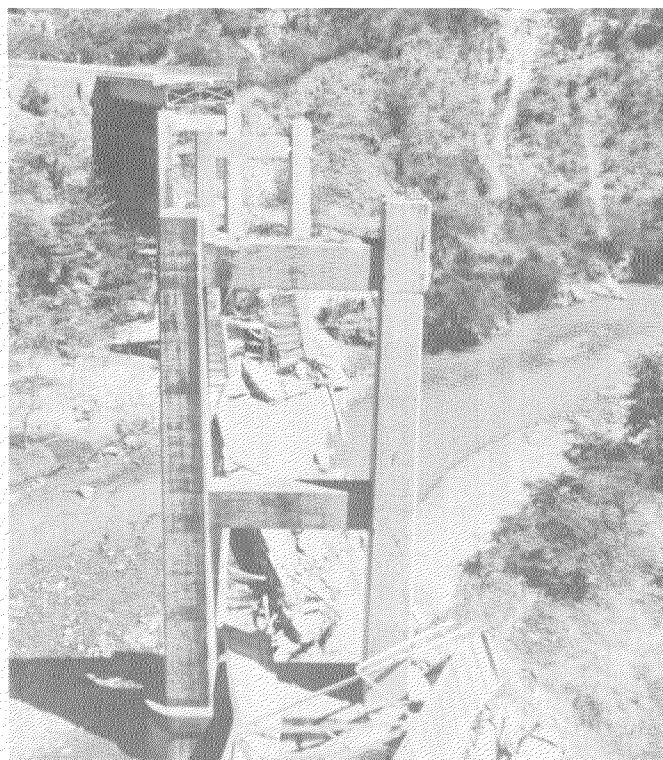


FIGURE 64.—Collapse of three central spans of the Agua Caliente Bridge, Kilometre 36 on the road to the Atlantic Ocean. This bridge was constructed in 1959



FIGURE 65.—Benque Viejo Bridge, on the verge of collapse after failure of supports, shown by arrow.



FIGURE 66.—Failure of short column in three-story framed reinforced-concrete structure in Guatemala City (Zone 7).