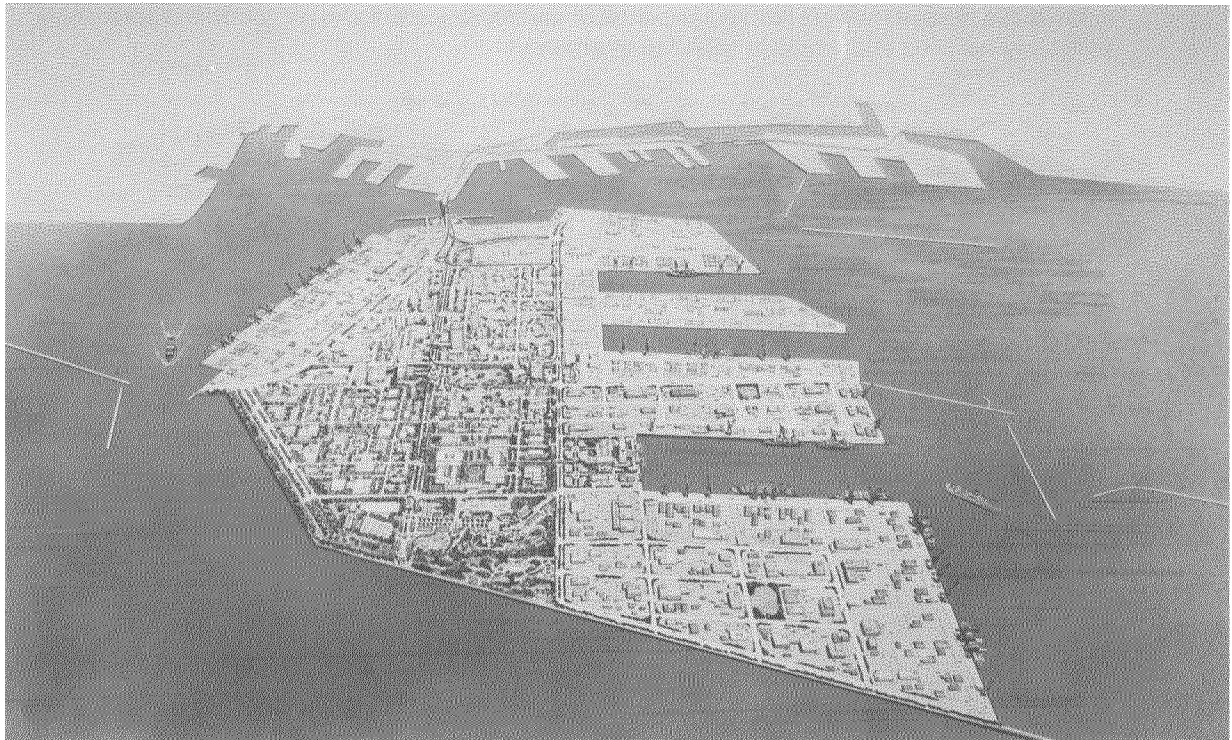


Development of a Kobe Business Start-up Zone

Areas on Port Island (second-stage area) will be allocated for a specified period to comprehensively develop systems to help incentives of corporate activities grow so that new industries and companies can be introduced. Accumulation of companies with specified themes will be promoted as a result. Attracting and developing complexes to accommodate a mass of visitors are promoted with a "super convention center" (international conference and exhibition halls) as its core.

[Outline of the Plan]

- 1) Development of pivotal facilities to serve as a base of incubation (assistance to business start-up)
 - Attracting pivotal facilities for incubation
 - Establishment of Digital Visual Image Institute, which is the pivotal project of the KIMEC (Kobe International Multimedia and Entertainment City) plan.
 - Application of "the Venture Capital System" of restoration funds
 - Preparation of incubation spaces in areas allocated for provisional use for about five years
- 2) Formation of promotional areas for location of companies (establishment of "an Enterprise Zone")
 - Tax incentives and deregulation
 - Application and expansion of a comprehensive bonded area system
 - Establishment of "KIMEC World," a pivotal project of the KIMEC plan.
 - Preferred development of information infrastructure using such equipment as optical fibers
 - Establishment of methods to offer land with a variety of patterns of location in mind (sale, rental and others)
- 3) Attracting and developing complexes to accommodate a large number of visitors
 - Development of a super convention center to meet the demands of international conventions
 - Attracting hotels, shopping centers, museums and others with new entertaining functions



China / Asia Exchange Zone

The "China/Asia Exchange Zone," which will serve as a base of exchange with rapidly developing Asian nations, including China, will be built on Port Island (second-stage areas) to encourage companies in Asia to locate to Kobe and promote trade. The internationalization of Kobe will develop with the introduction of functions as a base of culture in Asia, and releasing information in the age of a culture and information-oriented society in the 21st century in mind

[Outline of the Plan]

- 1) Building preferential berths for vessels used for trade with China and other countries in Asia
 - Building preferential berths, which enable large vessels to transport goods directly without the burden of reloading, promotes trade with the Shanghai Economic Zone and rapidly growing the Yangzi River Economic Zone in its upper stream, along which such cities as Nanjing, Wuhan and Chongqing are located
 - Promotion of deregulation such as reviewing the rule to oblige some vessels to be piloted when entering ports
- 2) Establishment of exchange zones
 - Establishment of exchange zones to attract Asian companies, tourists and visitors attending conventions to areas behind preferential berths for vessels serving trade with China and other Asian nations.
 - Implementing preferential measures such as deregulation and tax credits in exchange zones
- 3) Promoting academic and cultural exchange
 - Introducing Asian cultures and promoting international exchange such as cooperation among colleges to proceed with comprehensive international exchange in economic, academic and cultural fields
- 4) Strengthening functions of releasing information
 - Developing an infrastructure of information, and strengthening the functions of releasing information by direct contact with Asian countries through satellite communication.



Creation of Mother Port of Asia for the 21st Century

Restoring the functions of Kobe Port as soon as possible ensures the foundation of the local economy and citizens lives. It also ends any negative effects on the economy and industries of western Japan, the whole country and the world, helping to steady restoration of the economy of Kobe and its neighboring regions. This is not limited to restoration but envisioning how Kobe Port should be in the 21st century. Paying attention to the coordination between the city and the port, we will develop Kobe Port to be a mother port of Asia that survives disasters and serves as a comprehensive base of exchange to attract people, goods and information worthy of the status of an international city in the 21st century.

[Outline of the Plan]

- 1) Development of "Mother Port of Asia for the 21st century" that has survived an earthquake
 - Development of port facilities such as high-grade container terminals and multi-purpose berths that can accept "super-high speed" freighters
 - Strengthening and promoting tranship functions, developing wharves that serve international ferry transport.
- 2) Port development that contributes to industrial restoration of Kobe
 - Promoting international exchange and trade with Asian nations through measures as the introduction of a FAZ (Foreign Access Zone) system.
 - Newly developing physical distribution industries, attracting new industries that respond to the age of internationalization and information in the 21st century
- 3) Port development that contributes to the restoration of Kobe's attractiveness
 - Developing coastal areas that provide rich and comfortable spaces for living in harmony with urban functions.
- 4) Developing disaster-proof port facilities based on the lessons learned from the earthquake
 - Strengthening the quake-resistance of wharves, such as high-grade container terminals.
 - Promoting the development of facilities for disaster prevention and bases of disaster prevention that play a role in the foundation of a disaster-proof city.
- 5) New development of the port considering post-quake conditions
 - Strengthening the functions of Kobe Port by redeveloping existing wharves
 - Reducing overall expenditures concerning the use of Kobe Port and improving services such as the promotion of an information-oriented port.

Map of the Plan of Kobe Port (See Multi-Colored Appendix)

