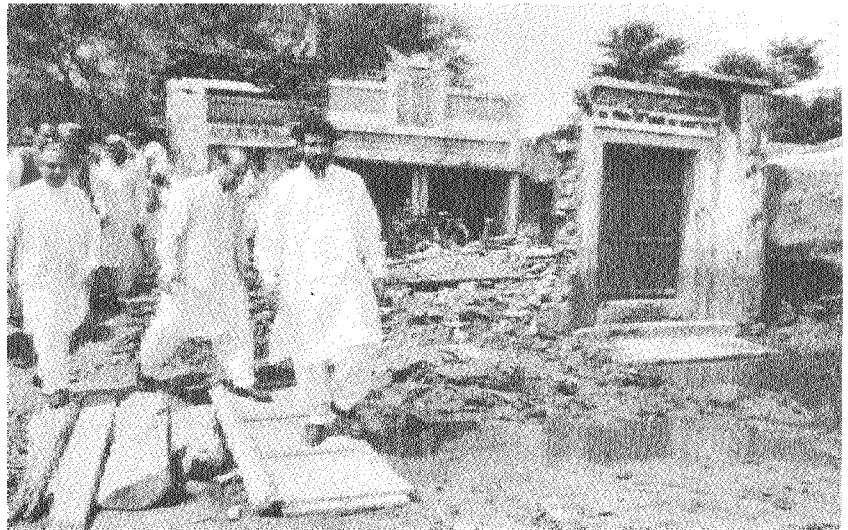
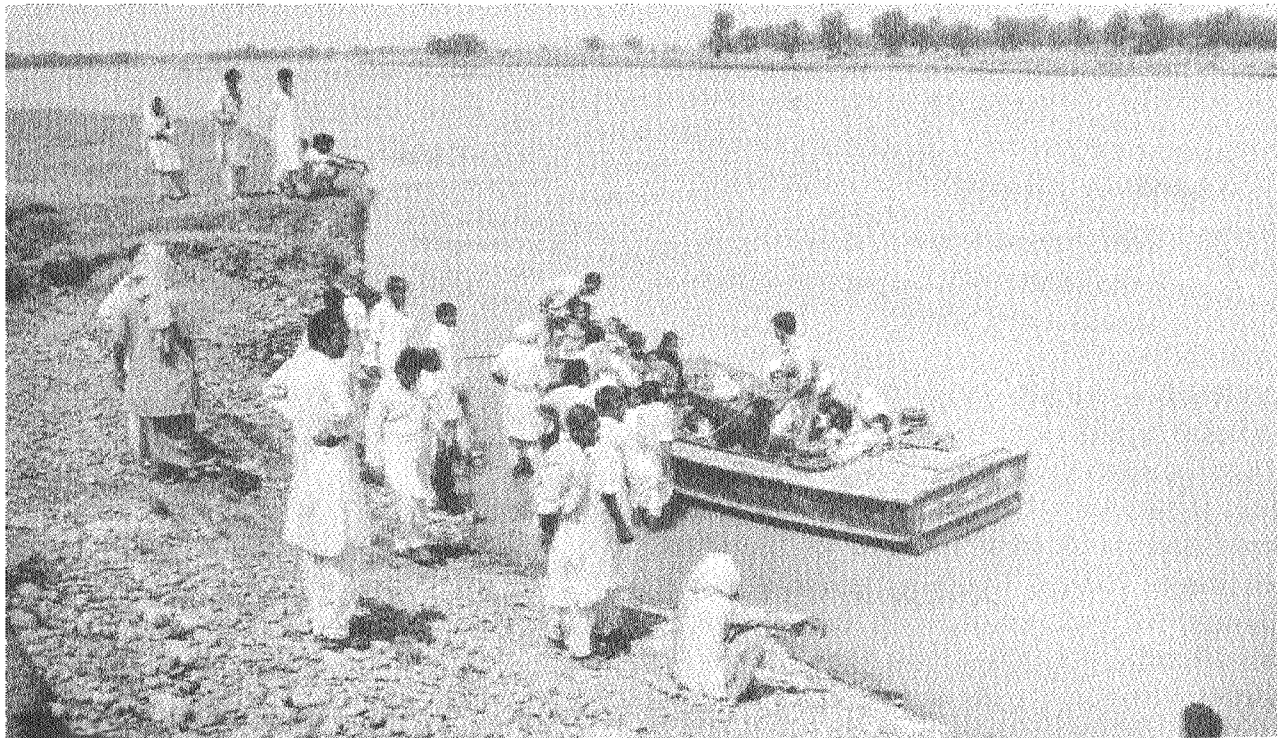


consequences for the region, which is Pakistan's main agricultural area. In the province of Kashmir thousands of people had to abandon their homes which were threatened by landslides and mudflows. The violent cresting of the Jhelum and Chenab rivers which join the Indus in the Punjab seriously affected the North-West Frontier Province and the southern province of Sind.



Pakistani Press Photo

*Pakistani officials visiting a house ruined by the floods in Panhar district Gujrat*



Pakistani Press Photo

*Evacuation by the army of marooned people in Jhelum city*

## ■ PANAMA Tornado

Schools, houses, factories and electricity system were damaged by a tornado which struck the suburban areas of Panama city

with winds up to 200 kilometres per hour on 6 July at 4 pm local time. 12 persons were killed and over 50 injured.