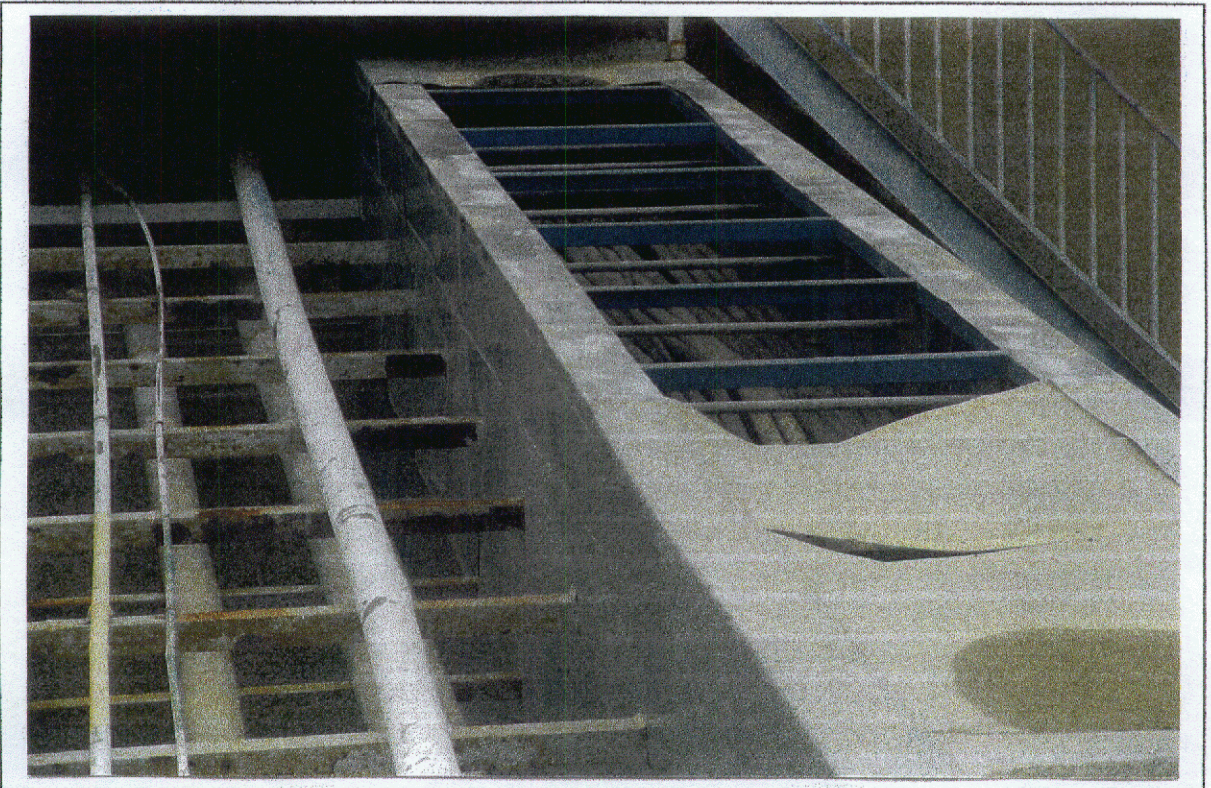




**Photo 23 - Electrical Cable Duct**

**Metal panels (covers) removed by sub-hurricane winds**

**This contributes to debris which could lead to collateral damage of adjacent facilities.**



**Photo 24 - Electrical Cable Duct**

**Metal panels (covers) removed by sub-hurricane winds**

**This contributes to debris which could lead to collateral damage of adjacent facilities.**