

### **2.23 Old Road Clinic**

**Personnel:**

- No-one was present.

**Damage:**

- The external doors were damaged but were probably in a bad state of repair before Luis

**Observations:**

- The building is of symmetrical shape with a hipped roof - a very safe geometry.
- There is a substantial water tank and a pump

### **2.24 John Hughes**

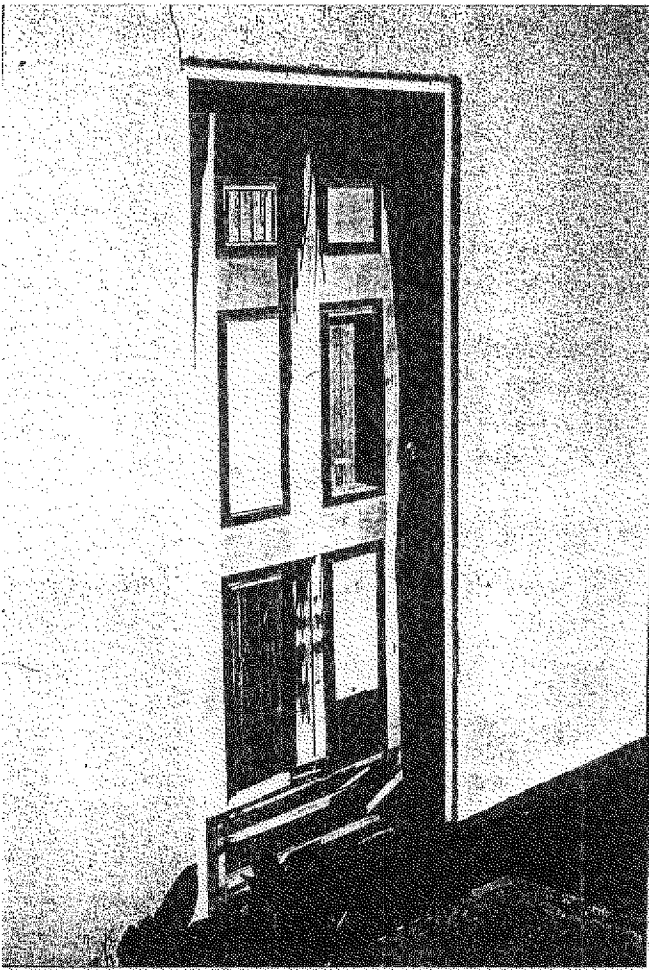
This building suffered substantial damage.

**Personnel:**

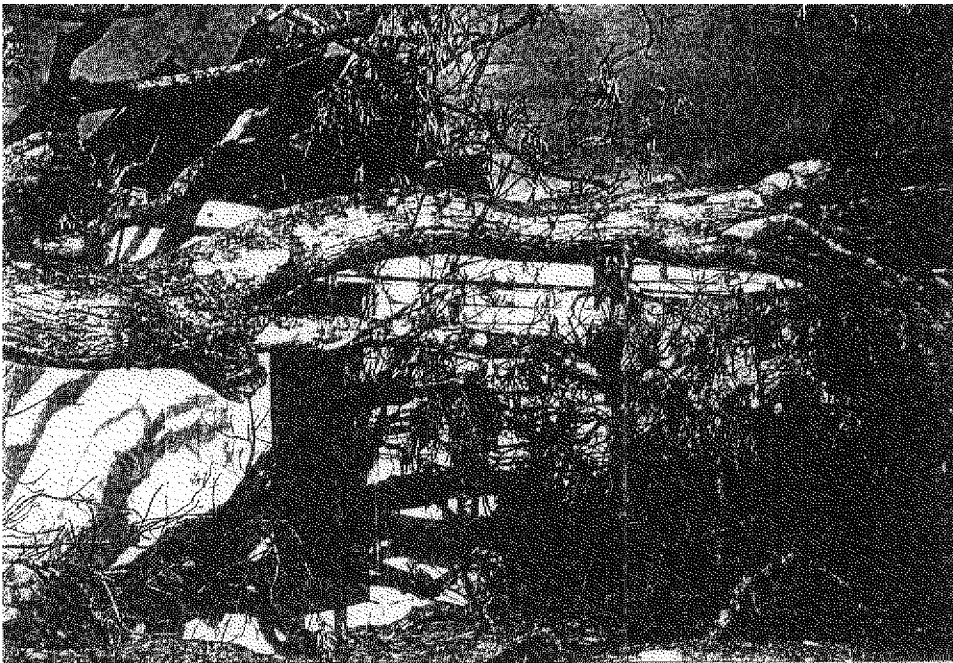
- No-one was present.

**Damage:**

- A large tree caused substantial damage by falling on to the roof.
- There was also wind damage to roof sheeting.
- The entrance canopy lost one of its supports due, in part, to wood rot.
- The unreinforced masonry supports for the water tank collapsed completely



Old Road - deterioration and resulting damage was commonplace with external doors.



John Hughes - nearby trees can be a hazard.