

## **2.27 Bendals Clinic**

### **Personnel:**

- The building was not occupied at the time of the visit.

### **Observations:**

- Unshuttered windows were of aluminium and timber louvres which were not damaged.
- No damage was observed to the structure.

## **2.28 Liberta Clinic**

This building suffered substantial damage.

### **Personnel:**

- District Nurse - Ms Evelyn Wade

### **Damage:**

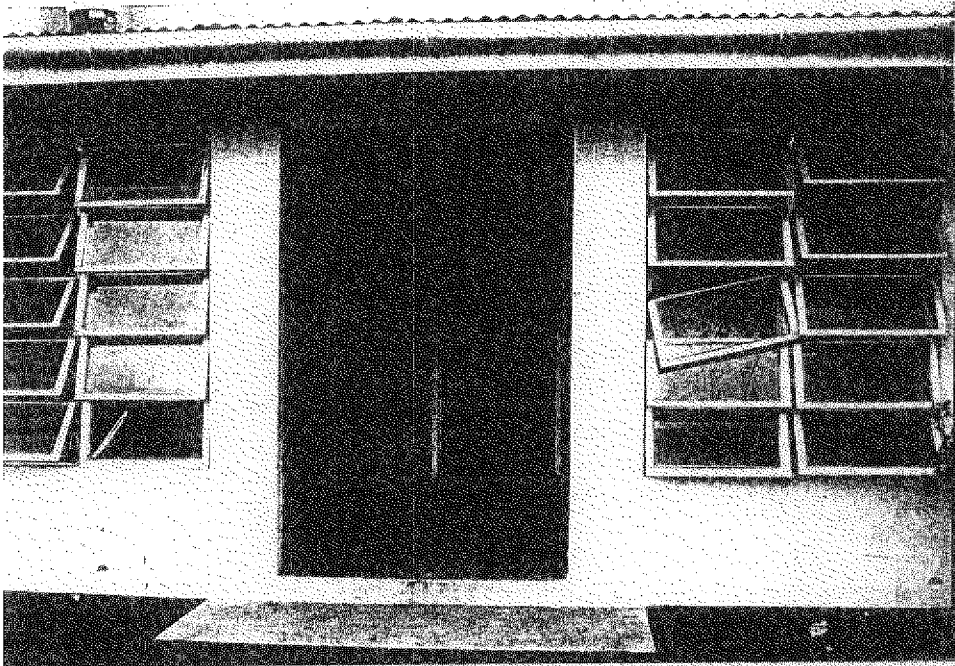
- Water damage on upper and lower floors (water entered through the roof and windows)
- Roof sheeting was damaged and lost.

### **Utilities:**

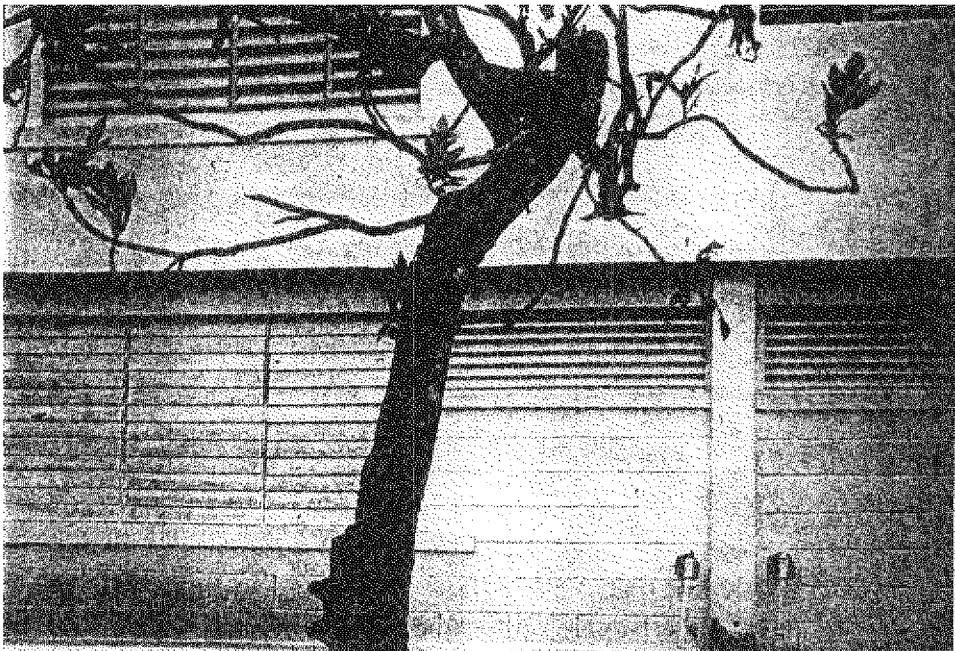
- Telephone - working
- Water - off; there is a water tank but the inlet pipe was broken by Luis
- Electricity - off

### **Observations:**

- Windows were broken before Luis
- There is only one exit from the lower floor - dangerous in a fire



- Liberta - the sole means of egress.



Bendals - secure fenestration.