

## 2.29 Cobb's Cross Clinic

This building suffered minor damage.

### Personnel:

- District Nurse - Ms Evelyn Wade

### Damage:

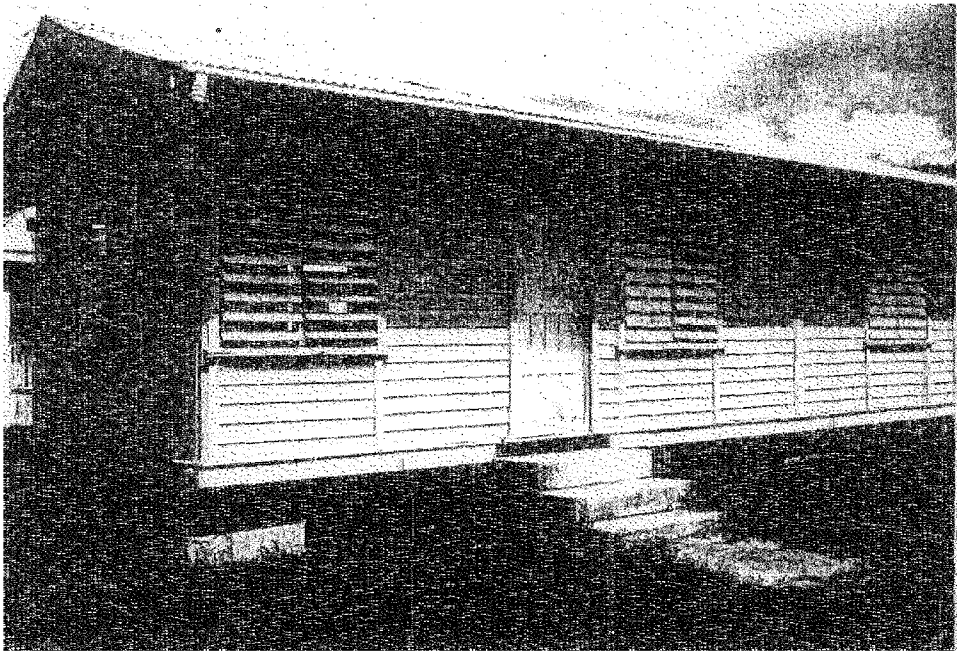
- A lot of water, grass and other debris was found inside the building on the Thursday after Luis
- The gable wall (timber) became detached from its support in one small area.

### Utilities:

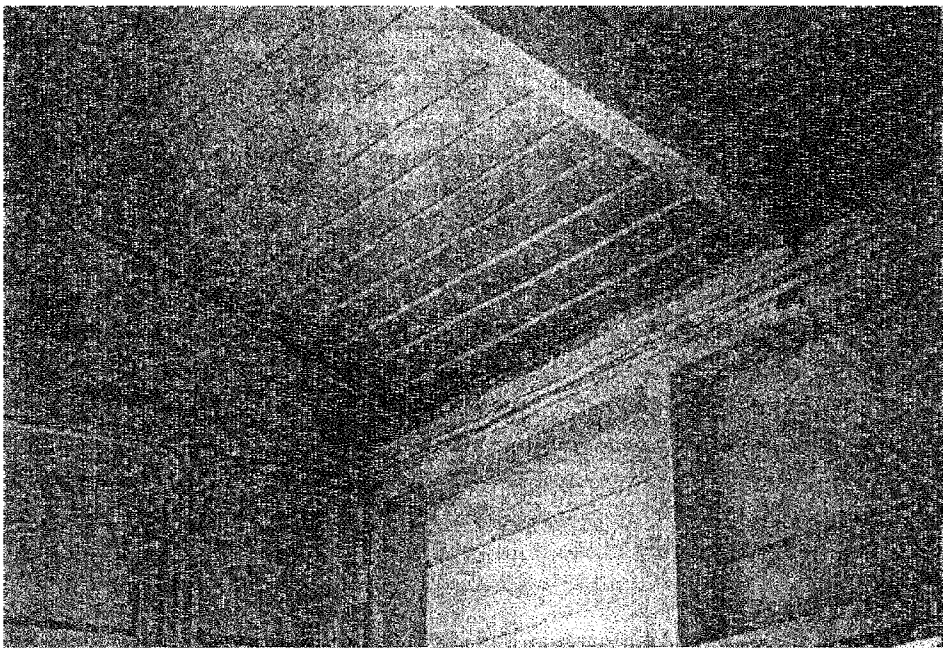
- Electricity - off
- Water - returned yesterday (95-09-20); the water storage tank is presently being cleaned.
- Telephone - working

### Observations:

- This clinic was rebuilt after Hugo
- The form of construction is simple, traditional, timber, domestic in type. Care has been taken about connection details.
- Had Luis lasted much longer (it was already an uncommonly long storm) there would have been loss of roof sheeting. Some of the fasteners should be resealed and reinforced.
- The holding-down straps at the piers are thin and not well protected from rusting. There needs to be a vigilant approach to maintenance.



\* Cobb's Cross - post-Hugo, well-anchored, light-weight construction.



Cobb's Cross - note hurricane straps.