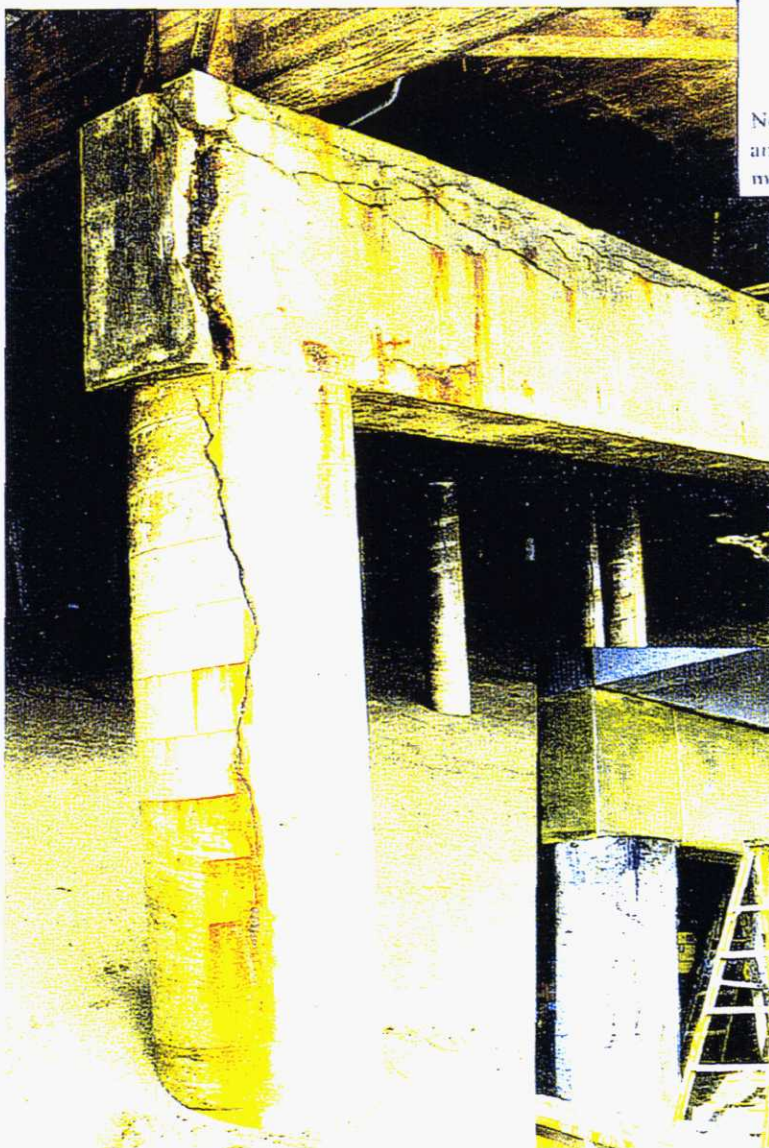




Completed beam and column application in Malibu, California



Note: When carbon fiber is used, several additional anchors are recommended to account for thermal movement.

Severely corroded beam-column on Malibu Beach. Deteriorated concrete was removed and repaired prior to application of Fibrwrap™.

Simple hand application of saturated Fibrwrap™ to the underside and sides of a beam on the beaches of Malibu.

