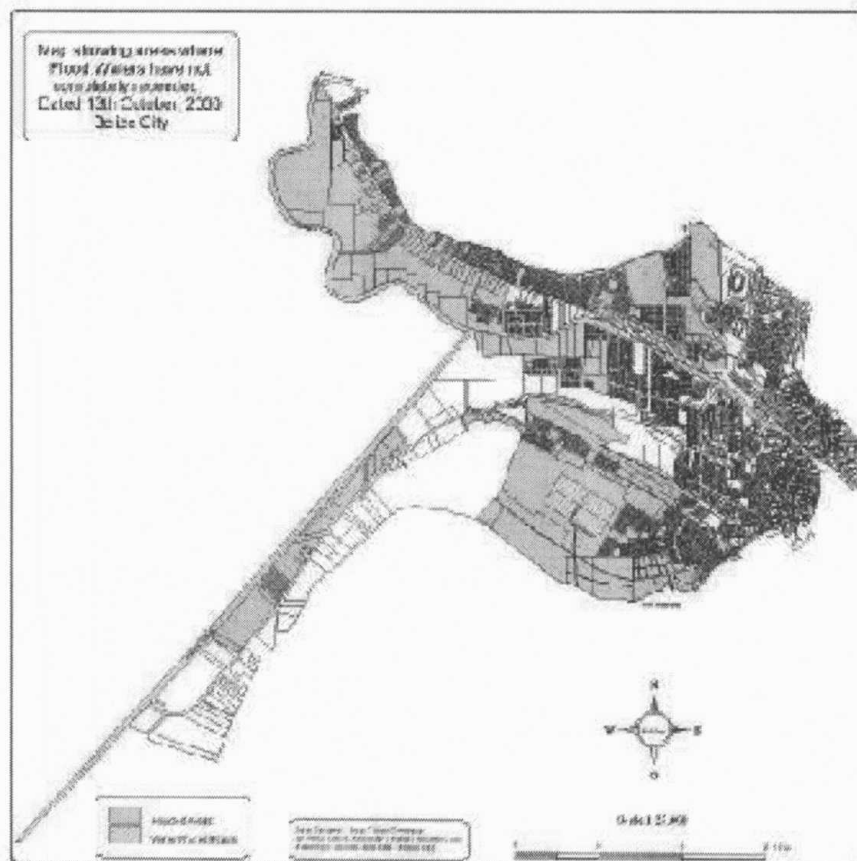


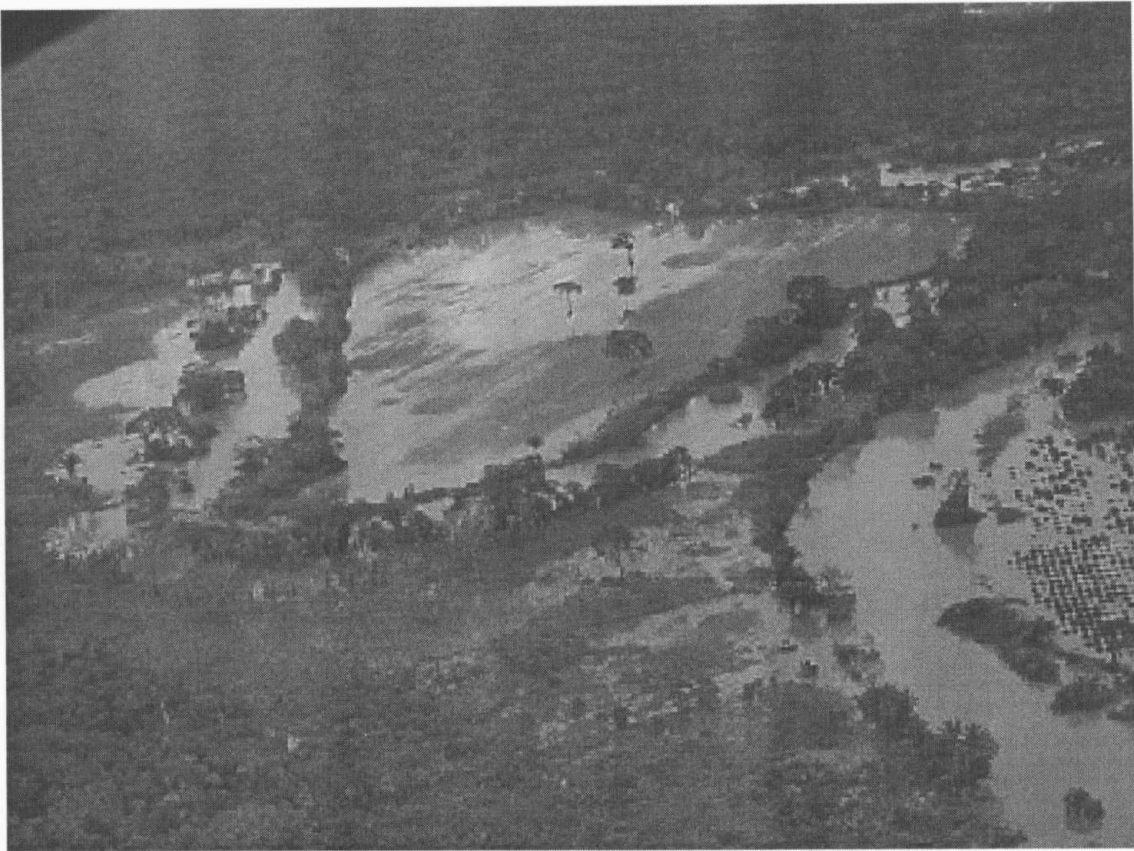
## **Photographic Annex**



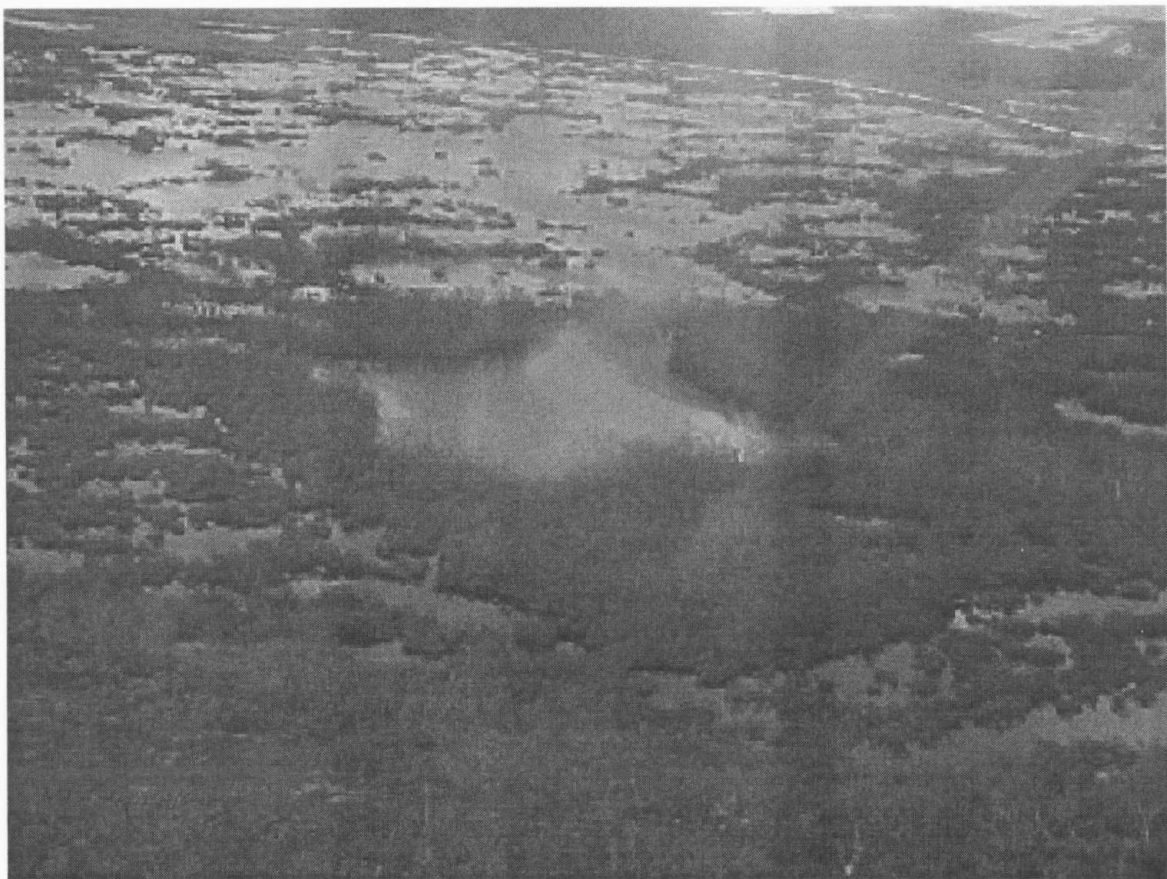
11. Belize City during Keith



2. Flooded areas in Belize City



3. Floods in Orange Walk District



4. Floods in Belize District



4. Cattle stranded in flooded pastures



5. New means of transportation during prolonged flooding.



6. San Pedro in Ambergris Caye



7. San Pedrito, Ambergris Caye: House was displaced from its foundation by water and windforce.