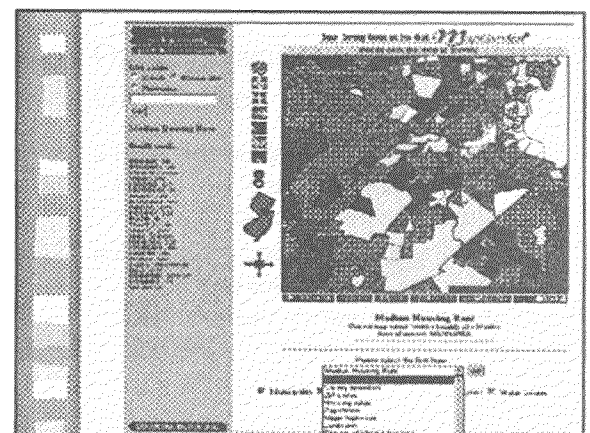
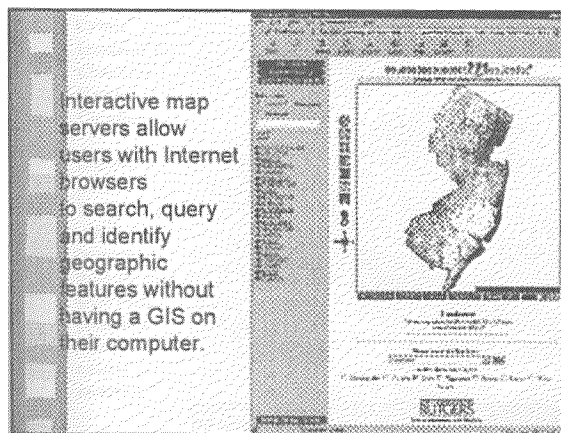


## GIS and the Web

- The future of GIS is on the World Wide Web
- MapGarden is a web-based GIS from Rutgers
- Local government can access these maps delivered across Internet
- Working on providing models across the Internet

## Web-Based GIS

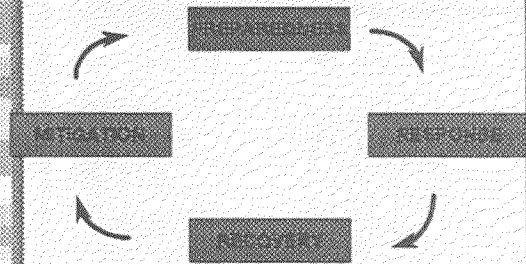
- Growth of world wide web permits data bases to be located anywhere
- Web-based GIS means that different organizations can share data
- Example -- MapGarden from Rutgers University



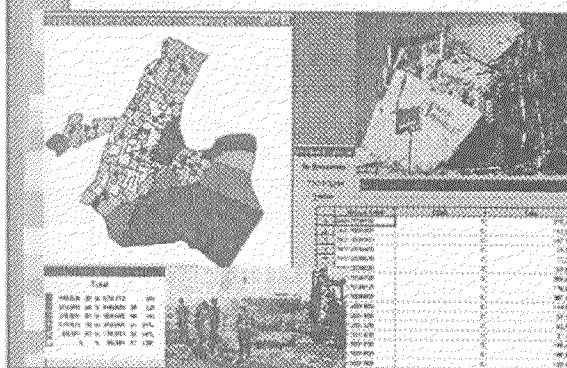
## Disaster Management

- GIS is very useful for disaster management
  - Calculate buffers around hazards
  - Use networks to plan escape routes
  - Important information source
  - Develop database of damages
  - Use remote sensing data

## Disaster Management



## Disaster Response and Damage Assessment use GIS and Real-time Field Data

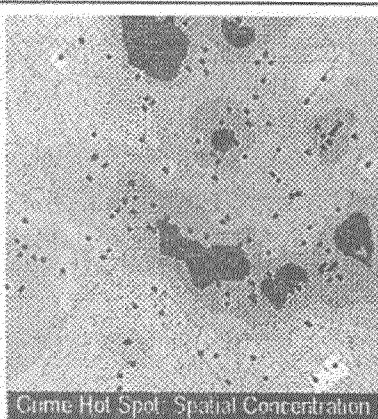


## Spatial Analysis using GIS

- Can do many analyses
- For example
  - Crime analysis
  - Optimal facility location, for businesses and public facilities such as a hospital

### Crime Incidents in Charlotte, North Carolina

Mapped as  
points  
Hot spots are  
calculated  
using the  
total distance  
from each  
event to a  
number of  
nearest  
incidents.



## Optimal Facility Location with a GIS Viewer

- Planners would like to locate a new facility in a "best" location using mathematical optimization techniques
- Example – Locate a store
  - NOT near other stores
  - AND in areas with high population density