



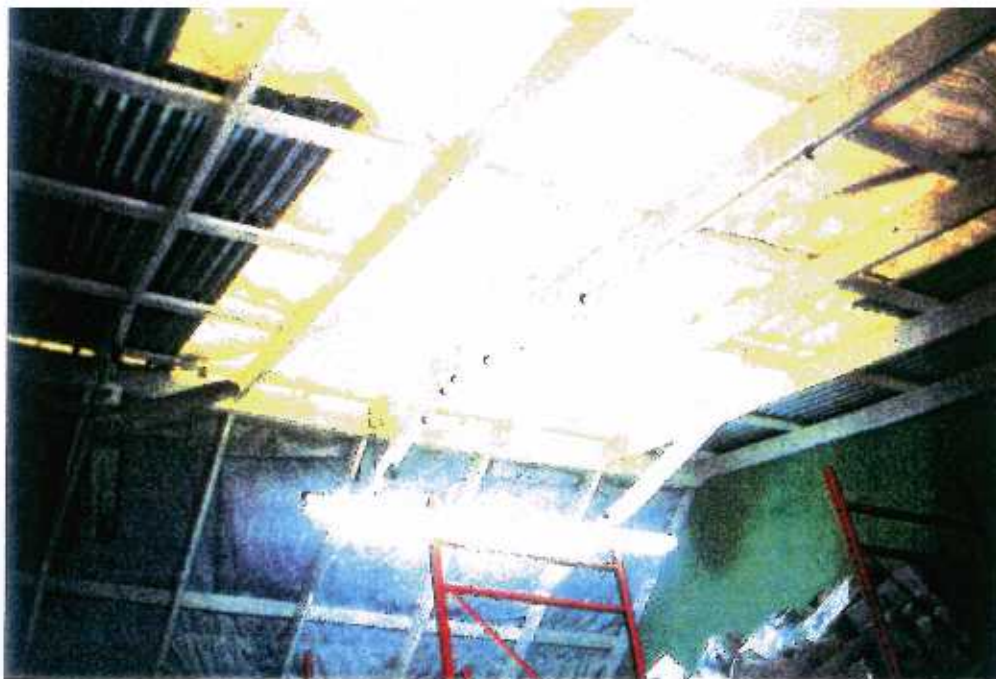
15 Friars Hill Workshop  
Surprisingly, the sheeting failed away from the fixing locations.



16 Friars Hill Workshop - view from inside showing loss of gable-end and ridge sheeting



17 Friars Hill Stores - loss of roof sheeting



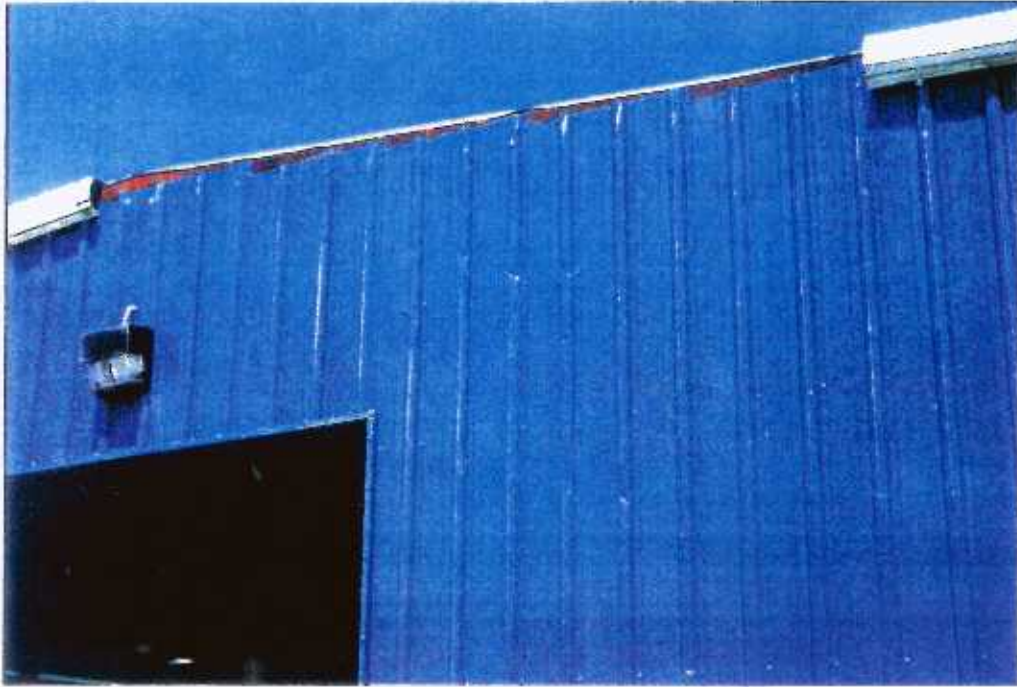
18 Friar's Hill Office Building - loss of roof sheeting



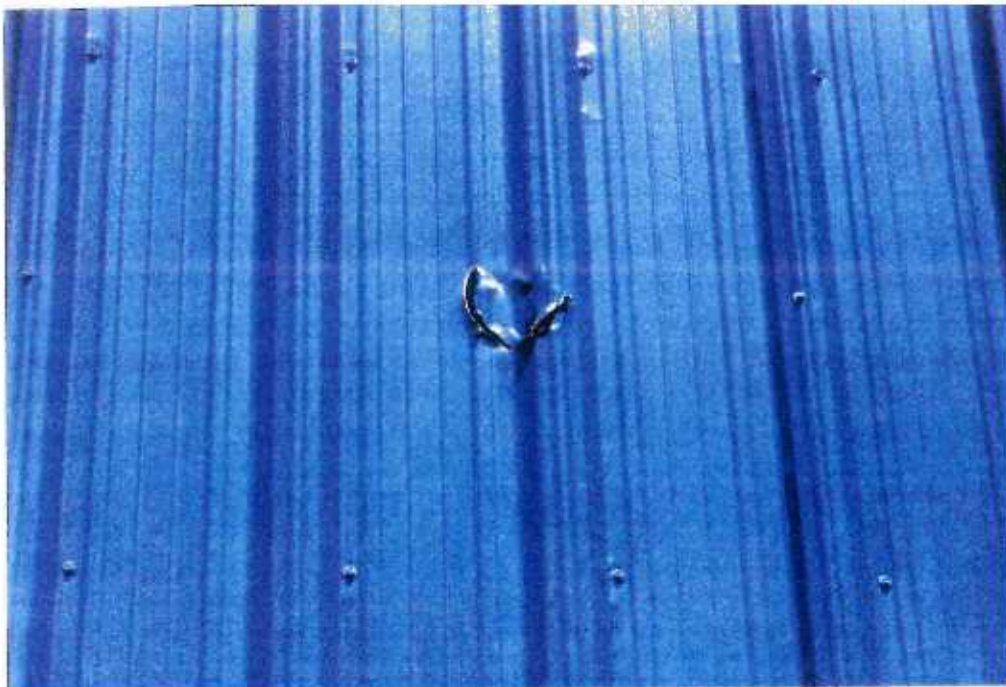
19 Crabbs Diesel Power Station - damage to gable-end sheeting



20 Crabbs Diesel Power Station - damage to gable-end wall and roof sheeting



21 Crabbs Reverse Osmosis Plant Building - loss of gable flashing



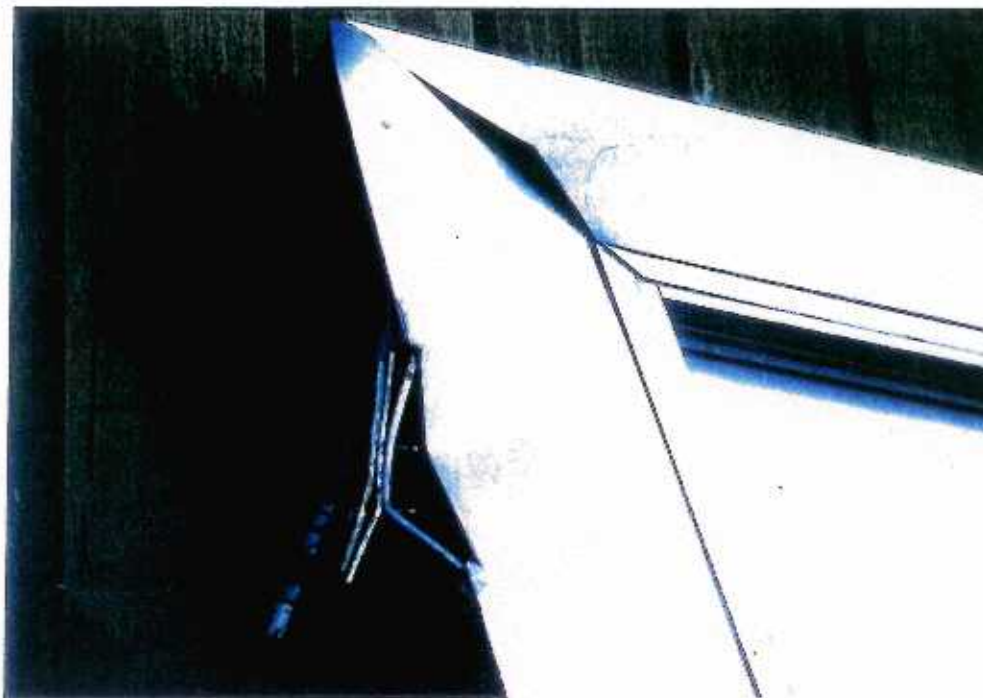
22 Crabbs Reverse Osmosis Plant Building - impact damage probably from a flying pipe



23 Typical container-type Substation Control Room showing door and window openings



24 Typical container-type Substation Control Room showing door removed by the wind



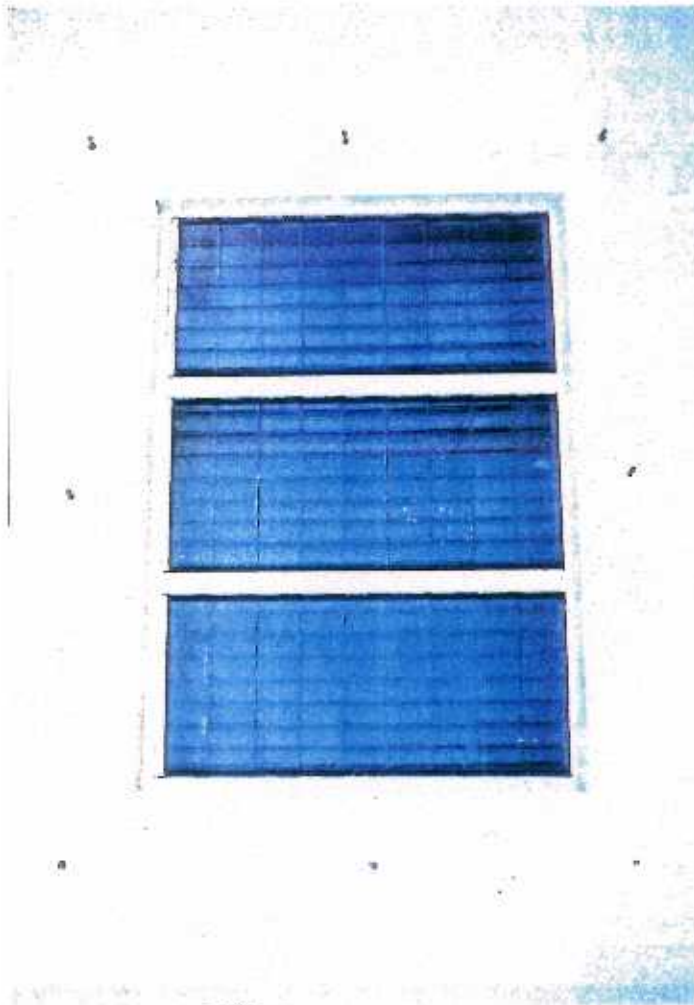
25 Close-up of damaged hinge of the door in No 24



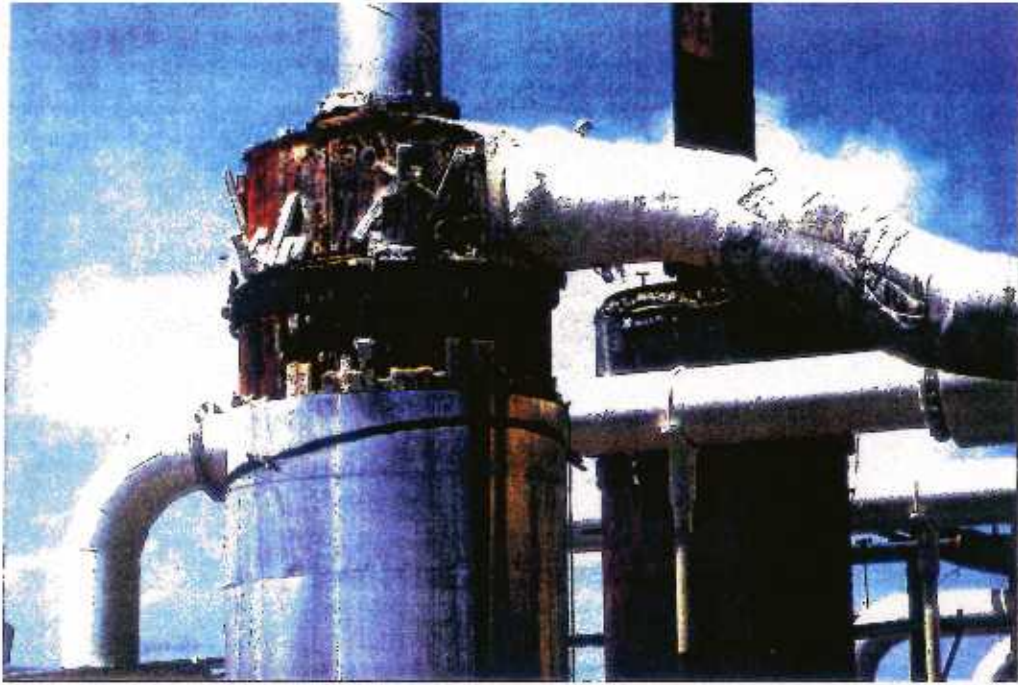
26 Crabbs Complex - destruction of roller shutter door, a common occurrence in hurricanes



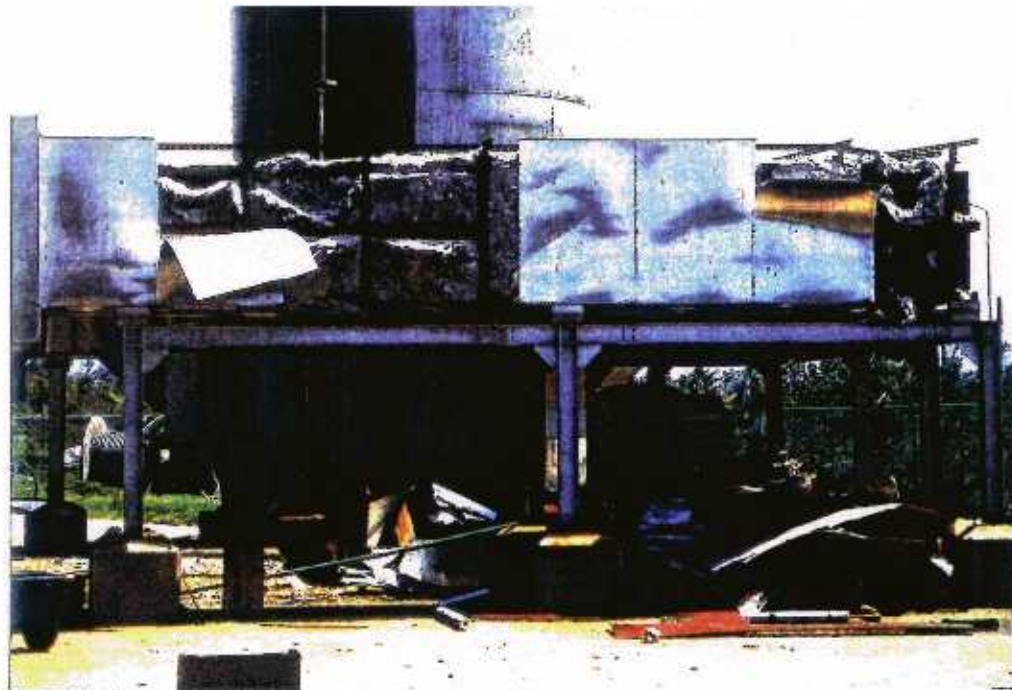
27 Cassada Gardens Complex - hurricane shutters were in place during Luis



28 Cassada Gardens Complex  
- bolts for fixing hurricane  
shutters



29 Crabbs Complex - damage to insulation of Fairbanks Morse stack



30 Crabbs Complex - damage to cladding and insulation around intake duct of Cogeneration Plant





31 Crabbs Complex - close-up of damage to cladding and insulation in No 30



32 Crabbs Complex - damage to cladding and insulation around intake duct of Cogeneration Plant



33 Cassada Gardens Complex - building with no damage whatsoever, proving that success is possible



34 Crabbs Diesel Power Station - control panels were protected by tarpaulin during Luis



35 Cassada Gardens Complex  
- control panels did not need additional protection during Luis



36 Belmont Substation - showing old and new types of Control Rooms



37 Swetes Substation - tie-downs were installed in advance of Luis to prevent toppling of the containers



38 Crabbs Complex - destruction of marine facility at the root of the Jetty due to wave action