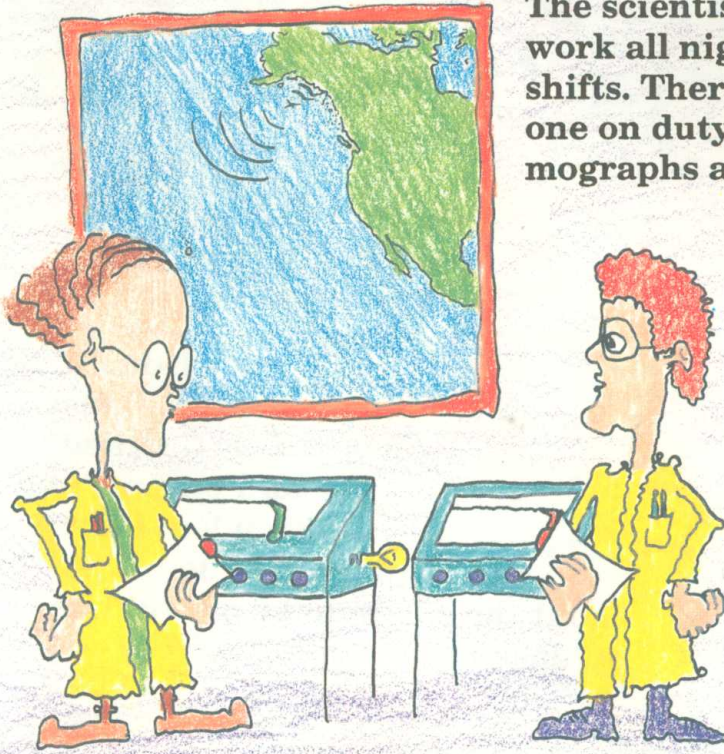
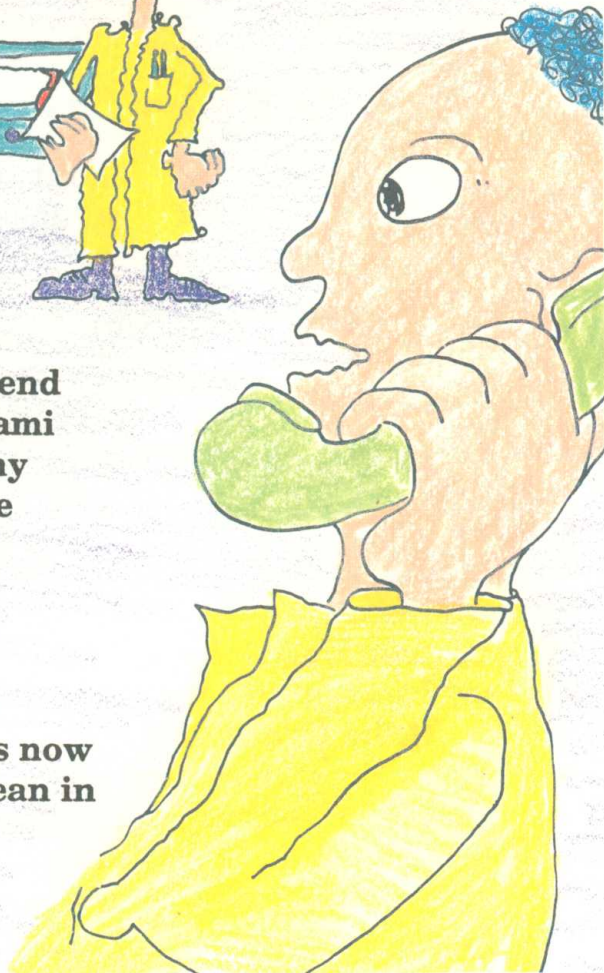


The scientists at the Center work all night and all day in shifts. There is always someone on duty checking the seismographs and keeping watch,



Quickly the scientists send messages to other tsunami warning centers in many countries all around the Pacific Ocean.

They tell them that the Alaskan earthquake has been big enough to start a tsunami which is now crossing the Pacific Ocean in all directions.

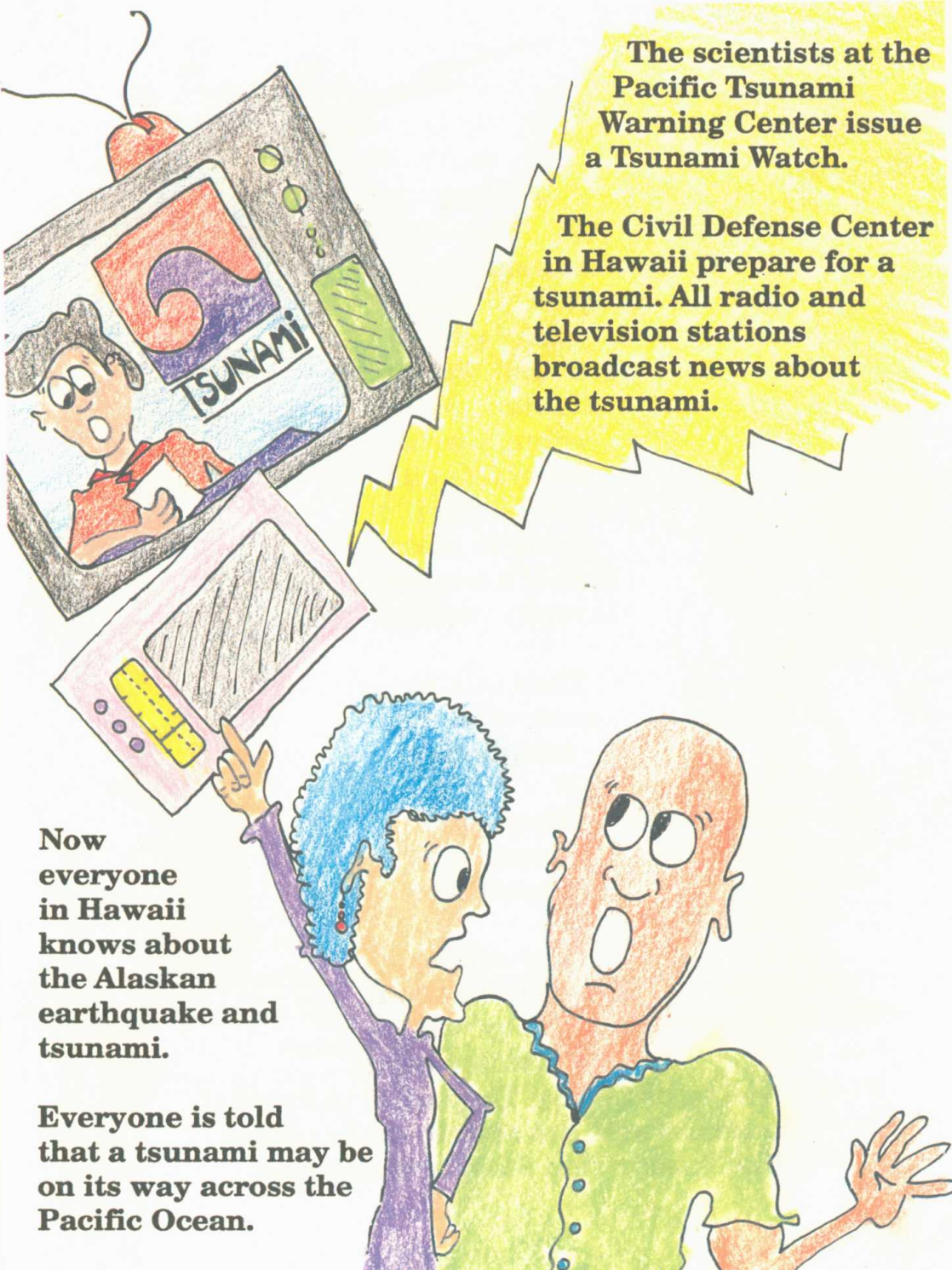


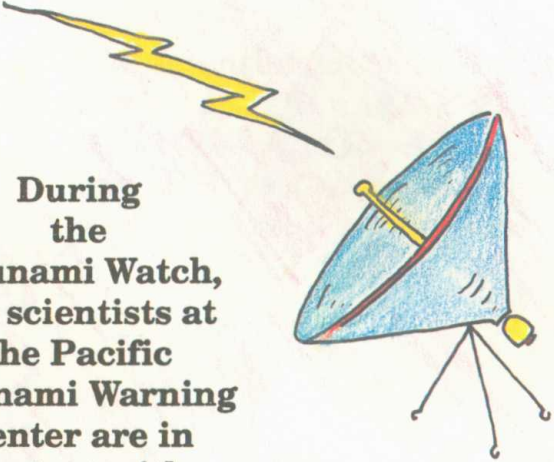
The scientists at the Pacific Tsunami Warning Center issue a Tsunami Watch.

The Civil Defense Center in Hawaii prepare for a tsunami. All radio and television stations broadcast news about the tsunami.

Now everyone in Hawaii knows about the Alaskan earthquake and tsunami.

Everyone is told that a tsunami may be on its way across the Pacific Ocean.



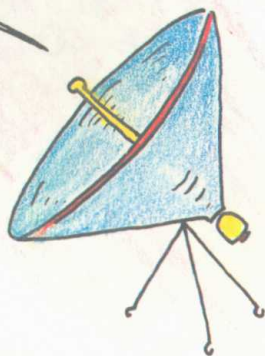


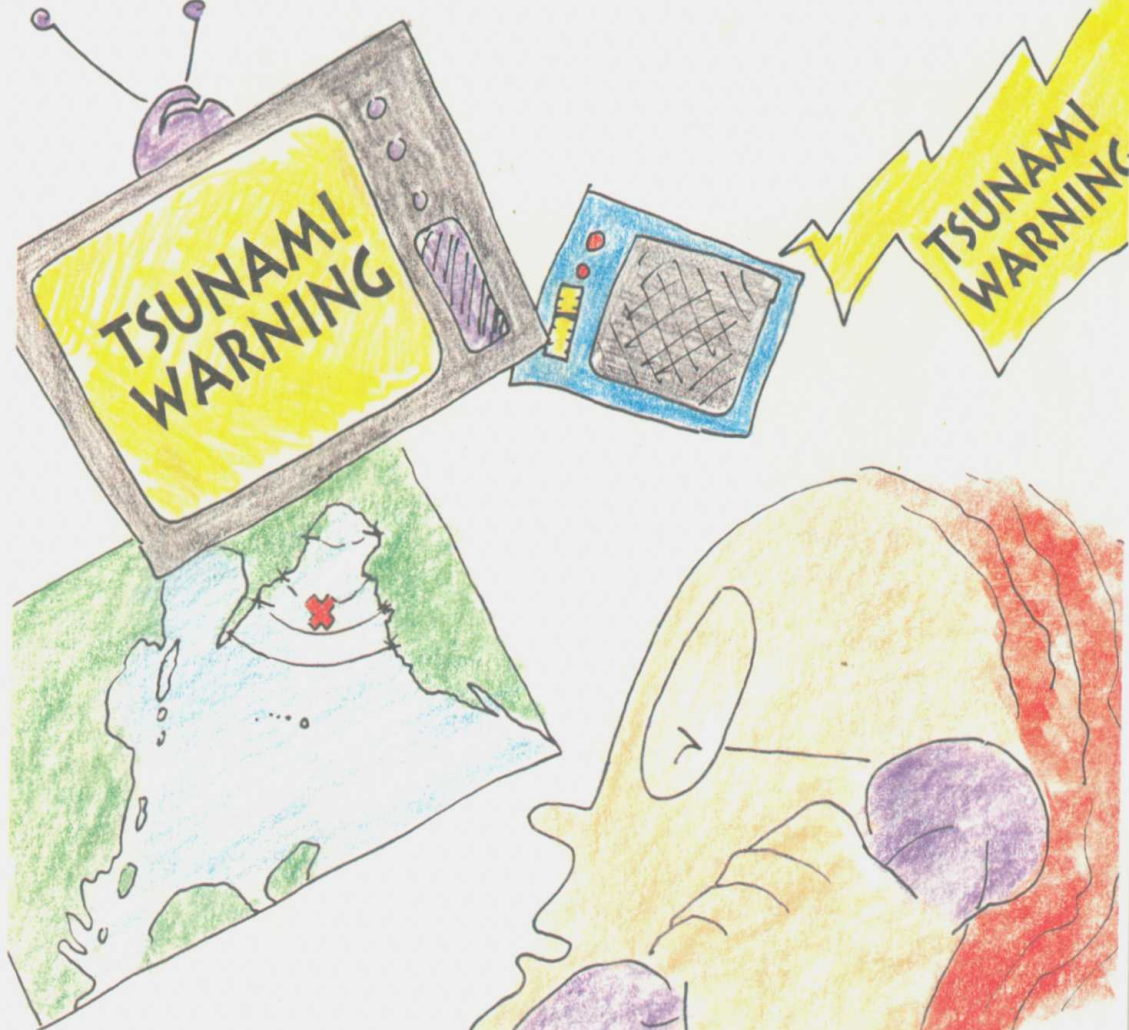
**During
the
Tsunami Watch,
the scientists at
the Pacific
Tsunami Warning
Center are in
contact with
scientists all
over the Pacific
trying to make
sure if a tsunami
is really coming.**

**They talk to
each other by
telephone.**

**They send
messages by
satellite.**

**They ask for
information about
tides. They want to
know if water levels
are rising or falling. They want to know if
tsunami waves are seen in other places
like Washington State or California.**





By now the scientists have a lot of information. They know that a tsunami is coming across the Pacific.

They must warn everyone. They issue a TSUNAMI WARNING.