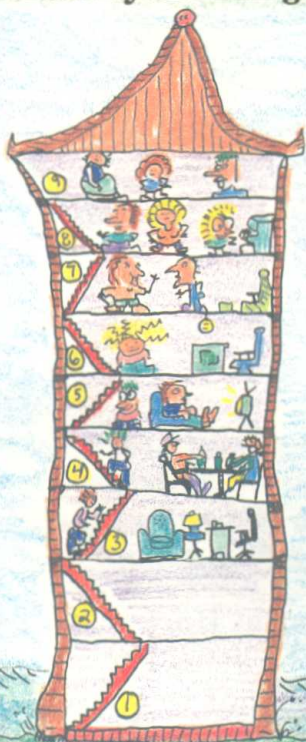


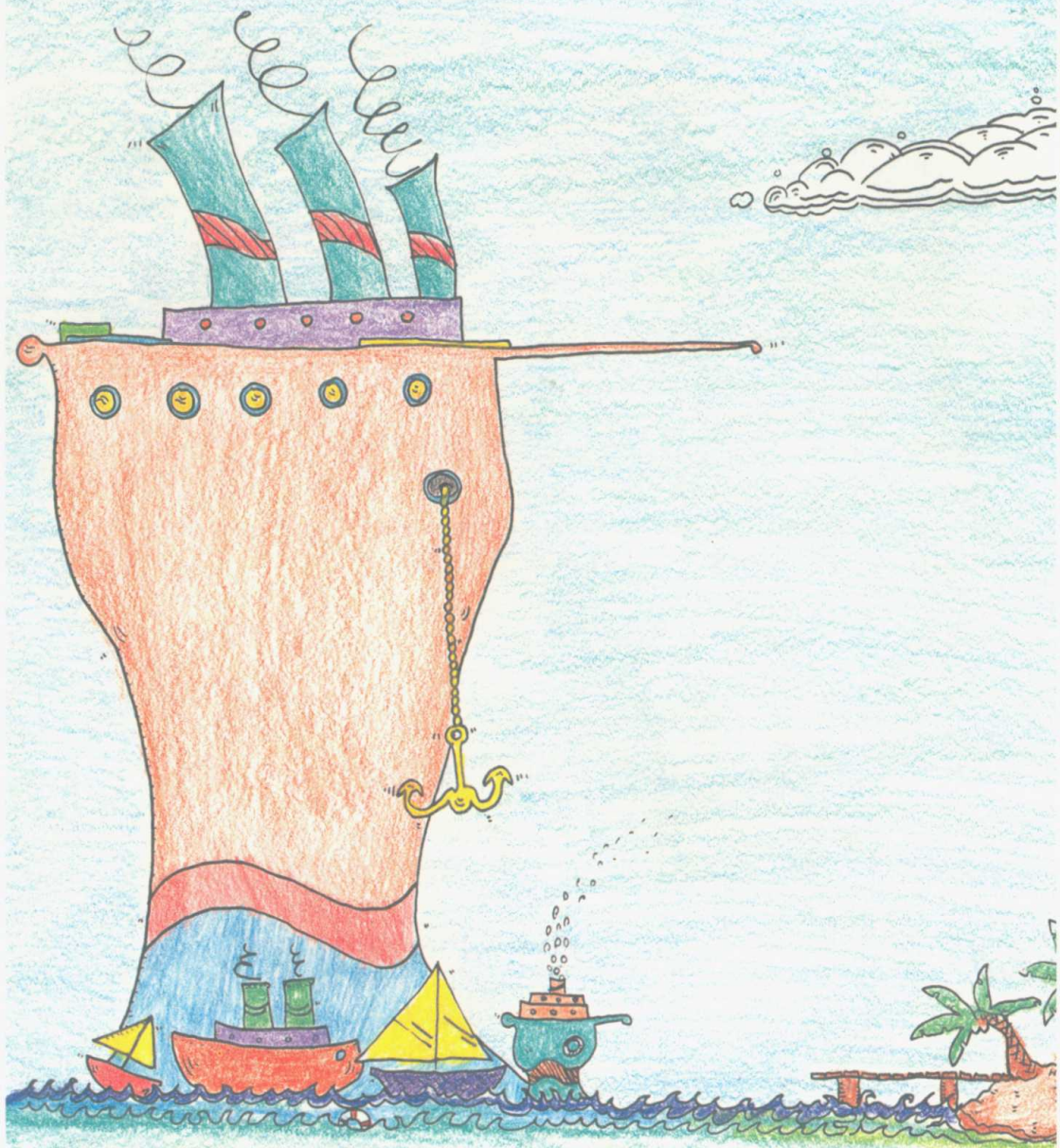
Some schools are in inundation zones. Teachers will evacuate the children by bus and take them to schools outside the danger areas. They will look after the children until the tsunami has gone. Then the parents will come to get the children.



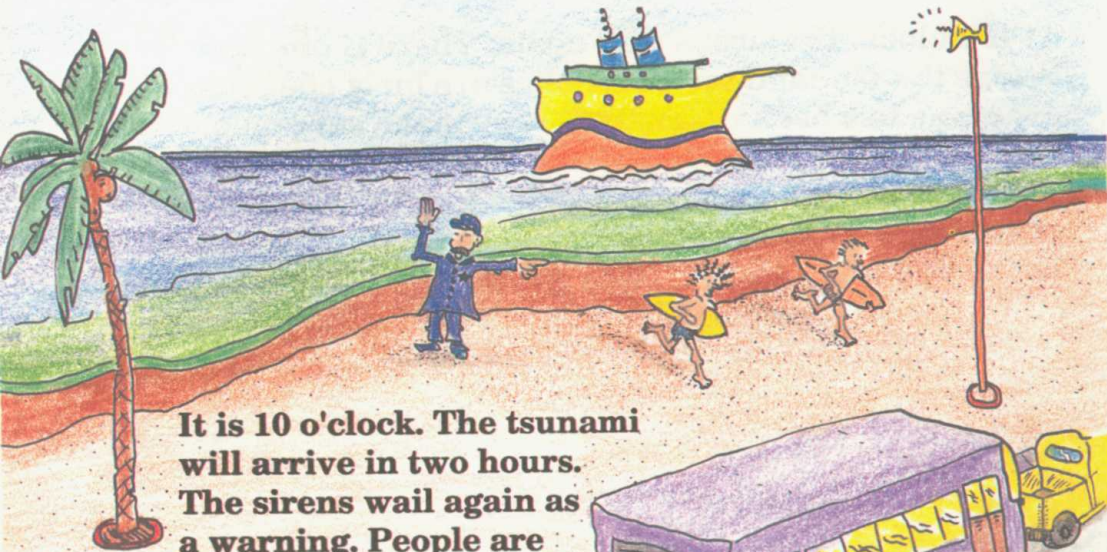
People move from the inundation zones to safe areas or shelters. Schools outside the danger areas are used as shelters. Anyone can go there to wait.



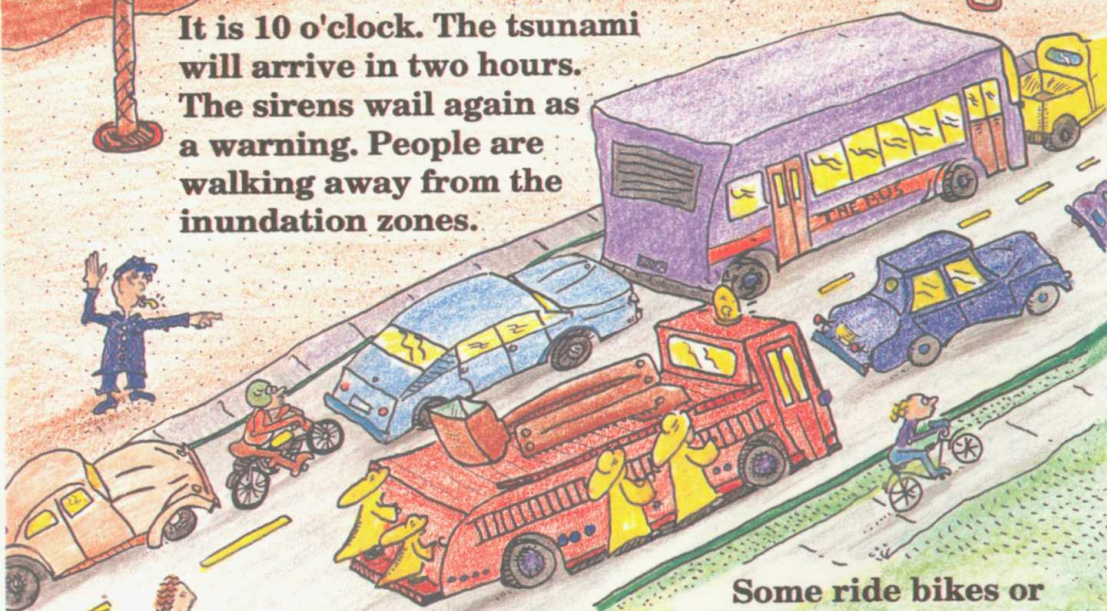
Some buildings are very strong. They are made of reinforced concrete and steel. People do not need to evacuate these. But they must leave the first and second floors and move to the third floor or higher.



The cruise ship will not put into harbor at Honolulu. It will remain out on the ocean where it will be safe. The Coast Guard and boat owners take their boats out to sea where they cannot be harmed by the tsunami waves.



It is 10 o'clock. The tsunami will arrive in two hours. The sirens wail again as a warning. People are walking away from the inundation zones.



Some ride bikes or motorcycles. Some drive cars or trucks. Everyone is helping to get people away from the danger to safety. Buses stop travelling on their usual routes and act as shuttle buses between the danger areas and shelters. People flag down the buses and ride to safety. They do not have to pay a fare. The policemen and fire-fighters and the Civil Defence are all very busy evacuating the inundation zones. There is a lot of traffic on the roads.