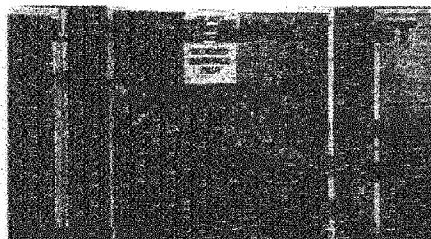
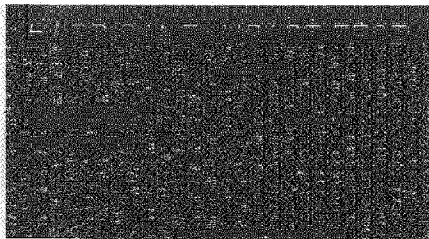


LEXAN® MR10 Sheet & LEXAN® XL10 Sheet— Glazing that lasts through storm after storm

**When the wind shrieks past 75 mph,
and the rain falls sideways,
otherwise harmless objects can
become lethal projectiles.**

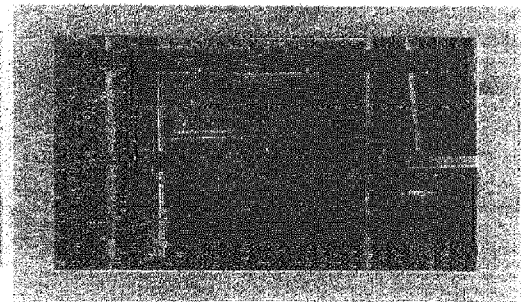
Propelled by hurricane-force winds, lawn chairs, road signs, lumber, tree limbs and other flying debris can destroy ordinary glass doors and windows in an instant. When doors and windows fail, the integrity of the building envelope is breached, resulting in internal pressurization of the structure. This internal pressure can lift the roof off a building or force the walls outward.

*LEXAN MR10 sheet withstands the
Dade County impact test without the
need for replacement.*



**The permanent, storm-ready,
transparent solution**

While shutters can provide storm protection for glazing and may meet the code requirements, they have a number of disadvantages. They're not ready at a moment's notice and must be re-applied or closed for each storm. They're difficult to apply above ground level, and they offer poor, if any, transparency. Permanently mounted shutters often detract from the aesthetics of a building. Removable metal shutters can be hard to install, requiring additional manpower, and



In recognition of the special hazard posed by windborne debris and of the importance of maintaining the structural integrity of doors and windows, in 1994 Dade County adopted tough new standards that govern the performance of glazing.

LEXAN MR10 sheet & LEXAN XL10 sheet—impact resistant glazing that exceeds the standard

To pass the Dade County standard, a glazing material must withstand two impacts from a nine-pound 2x4 traveling at 50 feet per second without penetration. Tempered glass shatters instantly. Laminated glass survives the test without penetration but is so badly crazed and cracked that it must be replaced.

With LEXAN MR10 sheet for vertical glazing and LEXAN XL10 sheet for sloped and overhead applications, the 2x4 simply bounces off. These two remarkable glazing materials are virtually unbreakable.

sometimes substantial space is needed to store them. Finally, a shuttered building can alert would-be burglars, vandals, and looters that a building may be unattended.

Laminated glass overcomes many of the disadvantages of shutters but is not multi-storm capable: when impacts cause cracking and crazing, it needs to be replaced. Because it must be wet-glazed, replacement costs are high, and there are no warranties covering breakage of the material.

By contrast, hurricane resistant glazing made with LEXAN sheet is always ready for a storm without additional preparations and offers transparency as good as any glass window. It's a solution that's ready when you are, and when you are not.

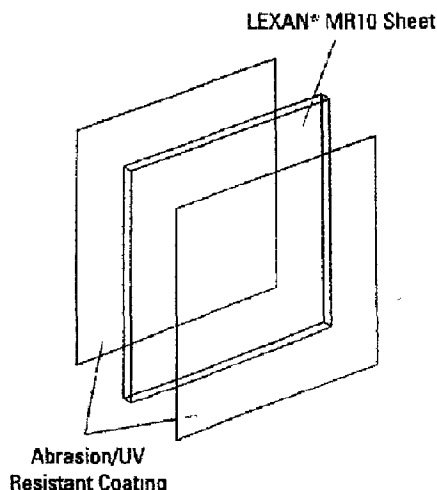


Figure 6
Extract from Lexan Brochure

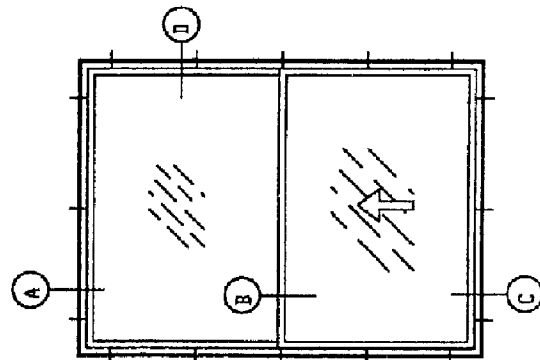
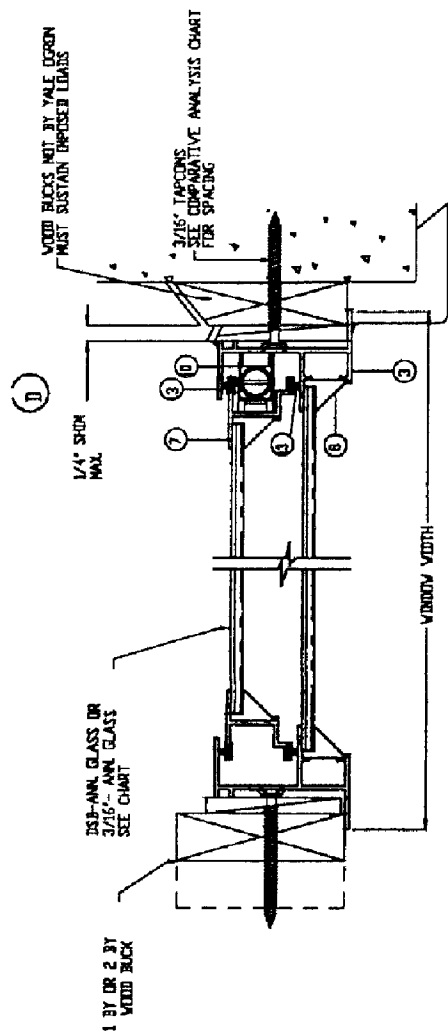


Figure 7
Generic Shop Drawing of Window Units

ITEM #	PART #	QTY	DESCRIPTION	REMARKS
1	YE-169	1	FRAME HEAD	6063-15
2	YE-165	1	FRAME SILL	6063-15
3	YE-102F	2	FRAME JAMB	6063-15
4	YE-152C	1	FIXED RAIL	6063-15
5	YE-151C	1	VENT TOP RAIL	6063-15
6	YE-163	1	VENT BOTTOM RAIL	6063-15
7	YE-92D	2	VENT JAMB	6063-15
8		AS REQD.	GLAZING BEAD	ROLL FORMED ALUM
9				
10		2/	VENT BLOCK & TACKLE BALANCE	
11	YH-511	AS REQD.	BULB VINYL	PVC (SINGLE)
12	YH-510	AS REQD.	BULB VINYL	PVC (SINGLE)
13	YH-509F	AS REQD.	PULP-SCHLEGEL .187 X .250	FIN SEAL (DOUBLE)
14	YH-504	2	VENT LATCH	NYLON DR CELDON
14A	YH-515	1	CAM LOCK @ CENTER OF VENT	ZANAK
15	# 10 X 3/4"	8	FRAME ASSEMBLY SCREWS	PLATED CRS
16	# 8 X 3/4"	2	FIXED RAIL SCREWS	CAD PLATED CRS
17	# 8 X 1"	4/	VENT ASSEMBLY SCREWS	CAD PLATED CRS

YALE OGROD WINDOWS AND DOORS
671 WEST 18 TH STR
HIALEAH, FL 33010
(305) - 887-2646

SINGLE HUNG SERIES 500



11.00/237

J N FRANCE HOSPITAL - ST KITTS

HURRICANE GEORGES DAMAGE REPAIRS

CONSTRUCTION PROGRAMME

8th March 1989

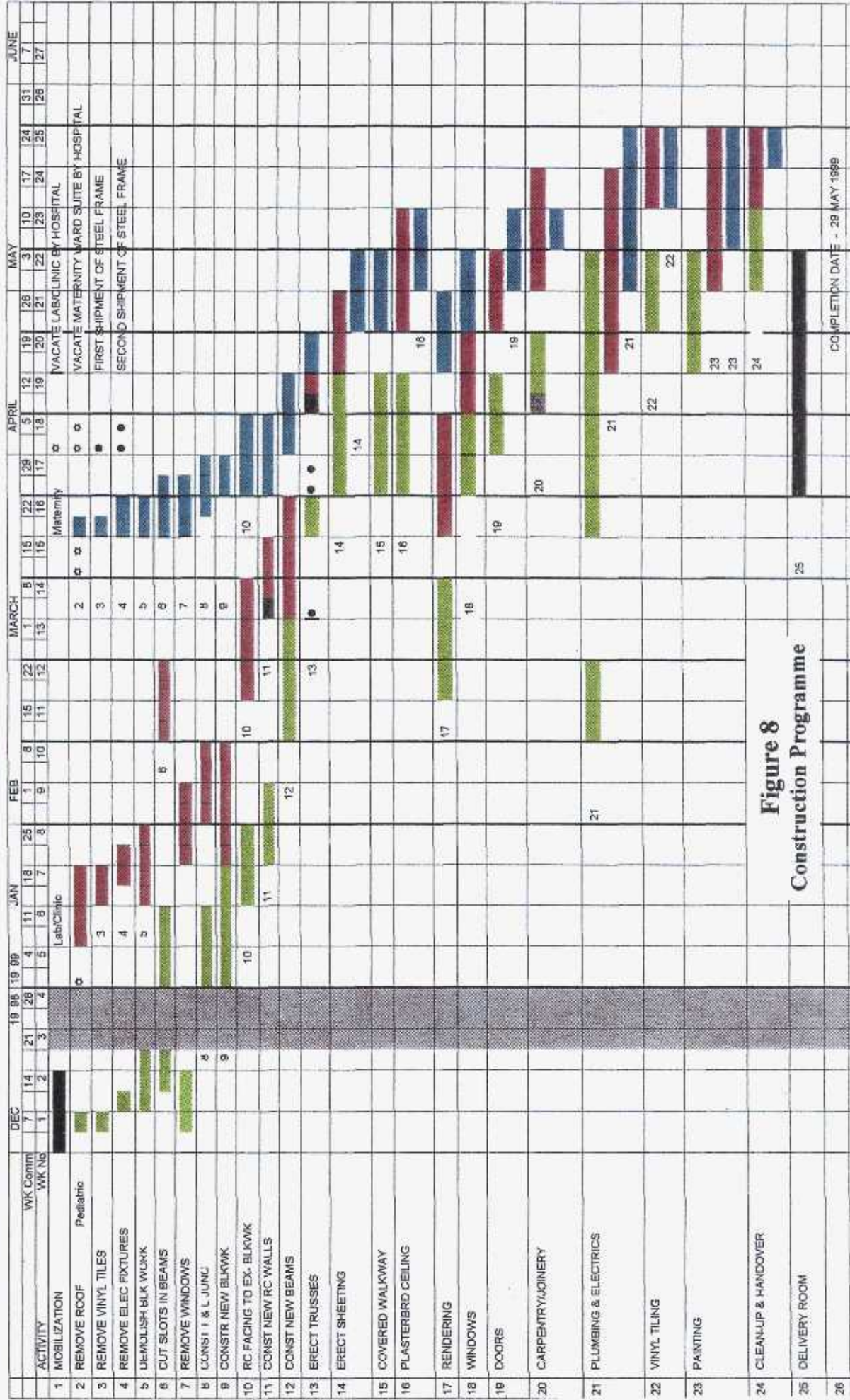


Figure 8
Construction Programme



Photo 1



Photo 2



Photo 3

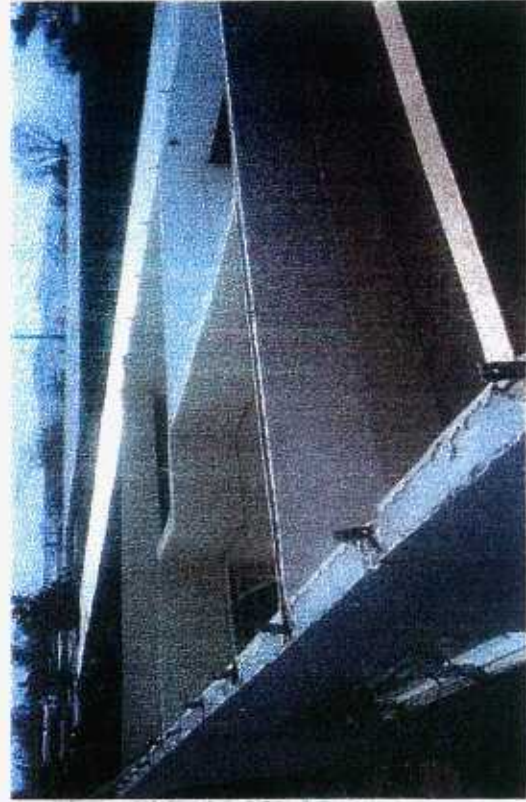


Photo 4



Photo 5



Photo 6



Photo 7



Photo 8



Photo 10

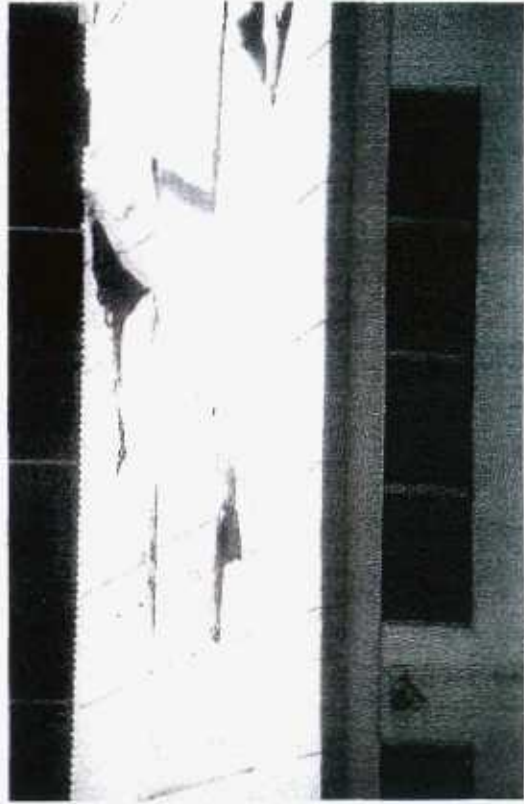


Photo 12



Photo 9



Photo 11

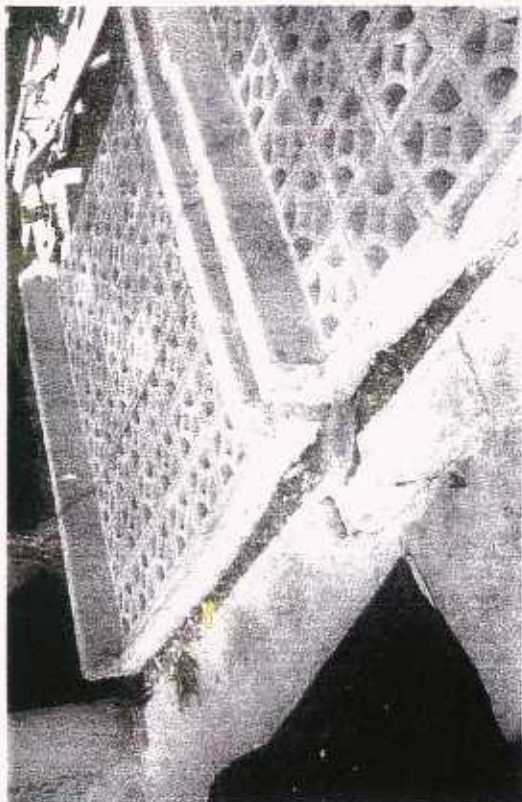


Photo 14



Photo 16



Photo 13



Photo 15



Photo 18



Photo 20



Photo 17



Photo 19



Photo 21



Photo 22



Photo 23



Photo 24