

"Documento original en mal estado"

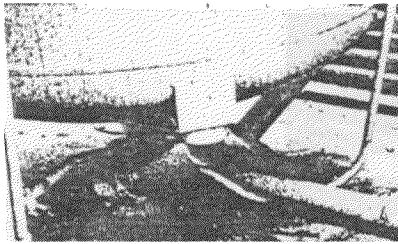


FIGURE 3.188. Bolts were sheared and nuts pulled loose on base plate supporting water softener. Pipe legs supporting tanks seldom perform well. Photograph courtesy of Hayakawa Associates and U.S. Department of Commerce, N.O.A.A.

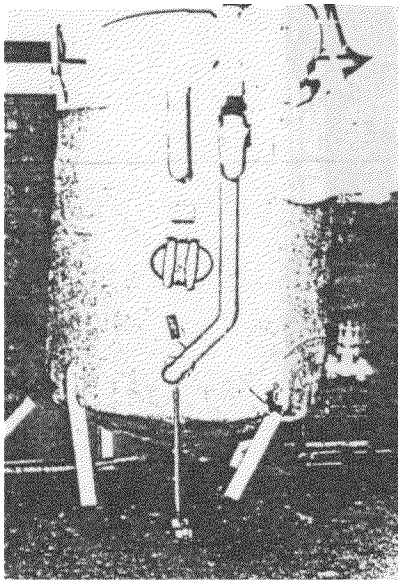


FIGURE 3.189. Damaged domestic hot water tank. Photograph courtesy of Hayakawa Associates and U.S. Department of Commerce, N.O.A.A.



FIGURE 3.190. High-pressure gas cylinders that were supported by light-weight chains. The chains were not adequately anchored to the wall in the background. Photograph courtesy of Richard Miller and the National Science Foundation.



FIGURE 3.191. Spilled files such as these can be prevented by shelf retainers. Photograph courtesy of J. R. Harris, National Bureau of Standards.

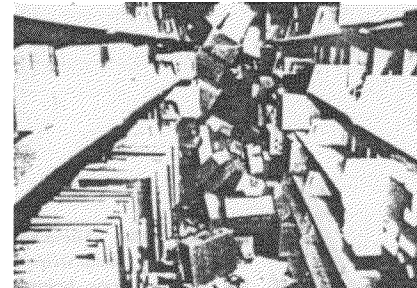


FIGURE 3.192. Boxes that spilled from their shelves. Photograph courtesy of Richard Miller and the National Science Foundation.



FIGURE 3.193. Typical library scene following an earthquake where shelf protection is not provided. Photograph courtesy of Richard Miller and the National Science Foundation

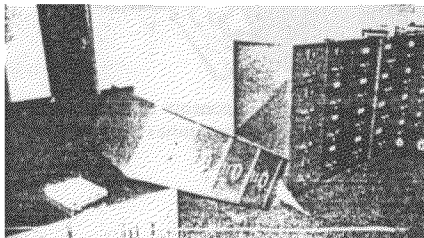


FIGURE 3.194. Without adequate protection filing cabinets can easily topple with the potential for blocking exit paths, and so forth. Photograph courtesy of J. R. Harris, National Bureau of Standards

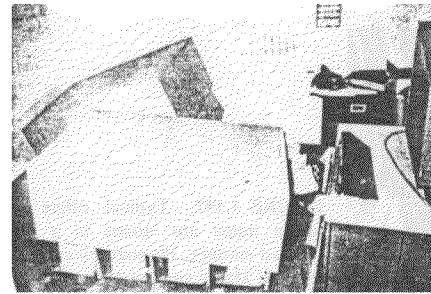


FIGURE 3.195. Top-heavy filing cabinets in the work space pose a significant hazard to personnel. Photograph courtesy of J. R. Harris, National Bureau of Standards



FIGURE 3.196. Even items such as library card files pose a potential threat to personnel. Photograph courtesy of Richard Miller and the National Science Foundation