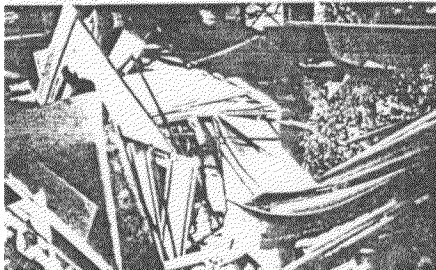


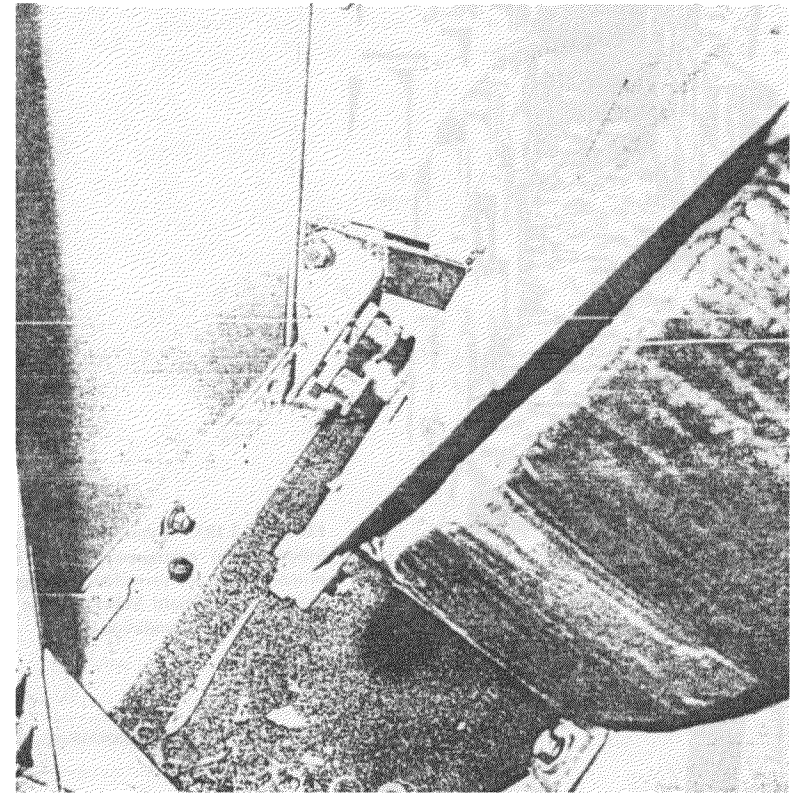
**"Documento original en mal estado"**



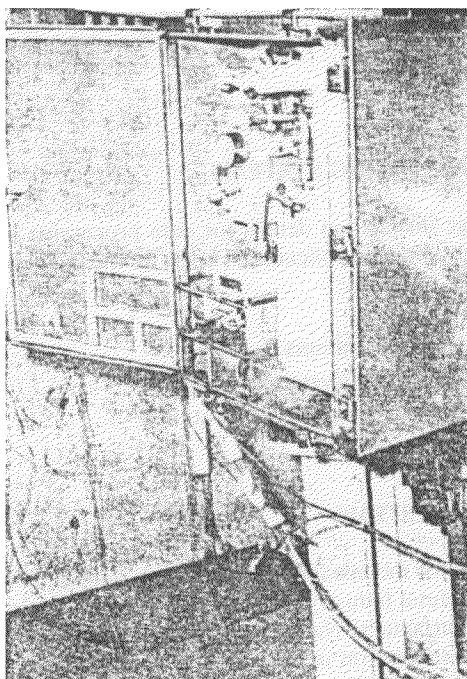
**FIGURE 3.197.** Typical office scene where items are stored in a loosely stacked manner. Photograph courtesy of Richard Miller and the National Science Foundation



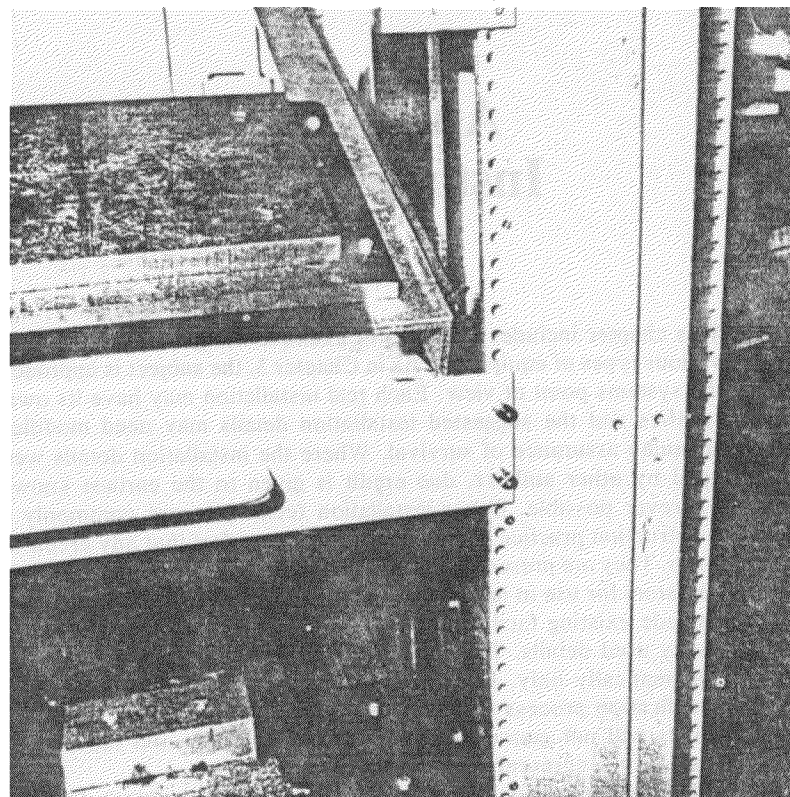
**FIGURE 3.198.** Damage to ad hoc storage. Photograph courtesy of Richard Miller and the National Science Foundation.



**FIGURE 3.199** Failure of dynamically sensitive internal components of a control cabinet during biaxial seismic testing. Photograph courtesy of Wyle Laboratories Scientific Services and Systems Group.



**FIGURE 3.200** Failure of hydraulic control module during biaxial seismic testing. Photograph courtesy of Wyle Laboratories Scientific Services and Systems Group.



**FIGURE 3.201** Failure of equipment rack during biaxial seismic testing. Photograph courtesy of Wyle Laboratories Scientific Services and Systems Group.