

Prepare a family disaster plan

When a flood WATCH is issued...

- Move your furniture and valuables to higher floors of your home.
- Fill your car's gas tank, in case an evacuation notice is issued.

When a flood WARNING is issued...

- Listen to local radio and TV stations or NOAA Weather Radio for information or advice. If told to evacuate, do so as soon as possible.

When a flash flood WATCH is issued...

- Be alert to signs of flash flooding and be ready to evacuate on a moment's notice.

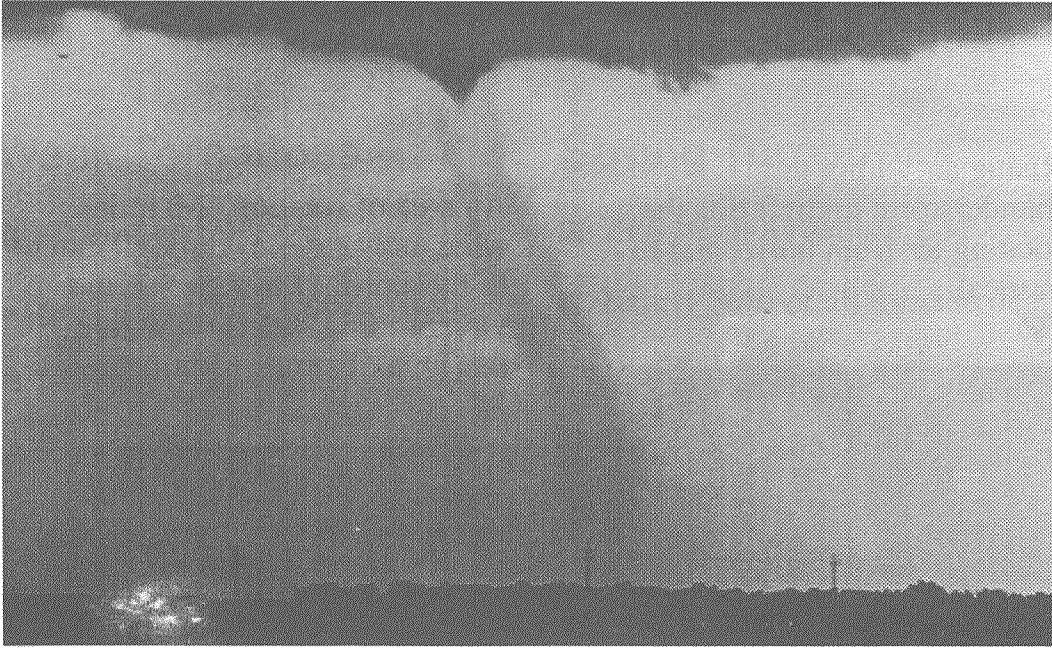
When a flash flood WARNING is issued...

- Or if you think it has already started, evacuate immediately. You may have only seconds to escape. Act quickly!
- Move to higher ground away from rivers, streams, creeks, and storm drains. Obey road safety measures because barricades are placed there for your safety.
- If your car stalls in rapidly rising water, abandon it immediately and climb to higher ground.

DEALING WITH NATURAL HAZARDS:

KIDS • TAKE • CHARGE

TORNADOES



Here's what you can do to prepare for such an emergency.

Prepare a home tornado plan...

- Pick a place where family members could gather if a tornado is headed your way. It should be the lowest floor of your home. It could be your basement, or, if there is no basement, a center hallway, a bathroom, or a closet on the lowest floor. Keep this place uncluttered.
- If you are in a high-rise building, you may not have enough time to go to the lowest floor. Pick a place in a hallway in the center of the building.
- Assemble a disaster supplies kit.
- Conduct periodic tornado drills so that everyone remembers what to do when a tornado is approaching.

DEALING WITH NATURAL HAZARDS:

KIDS • TAKE • CHARGE

WINTER STORMS



Here's what you can do to prepare for such an emergency.

Prepare a winter storm plan...

- Have extra blankets on hand.
- Ensure that each member of your household has a warm coat, gloves or mittens, a hat, and water-resistant boots.
- Assemble a disaster supplies kit.
- Have your car winterized before the winter storm season.
- Assemble a disaster supplies kit for your car.

Stay tuned for storm warnings

- Listen to NOAA Weather Radio and your local radio and TV stations for updated storm information.
- Know what winter storm WATCH and WARNING mean. A winter storm WATCH means a winter storm is possible in your area. A winter storm WARNING means a winter storm is headed for your area. A blizzard WARNING means strong winds, blinding wind-driven snow, and dangerous wind chill are expected. Seek shelter immediately.

DEALING WITH NATURAL HAZARDS:

KIDS • TAKE • CHARGE

When a winter storm **WATCH** is issued...

- Listen to NOAA Weather Radio, local radio and TV stations, or cable TV such as The Weather Channel for further updates.
- Be alert to changing weather conditions.
- Avoid unnecessary travel.

When a winter storm warning is issued...

- Stay indoors during the storm.
- If you must go outside, several layers of lightweight clothing will keep you warmer than a single heavy coat. Gloves (or mittens) and a hat will prevent loss of body heat. **Cover your mouth to protect your lungs.**
- Understand the hazards of wind chill, which combines the cooling effects of wind and cold temperatures on exposed skin. As the wind increases, heat is carried away from a person's body at an accelerated rate, driving down the body temperature.
- Walk carefully on snowy, icy sidewalks.
- After the storm, if you shovel snow, be extremely careful. It is physically strenuous work, so take frequent breaks. Avoid overexertion.

Avoid traveling by car in a storm, but if you must...

- Have emergency supplies in the trunk.
- Keep your car's gas tank full for emergency use and to keep the fuel line from freezing.
- Let someone know your destination, your route, and when you expect to arrive. If your car gets stuck along the way, help can be sent along your predetermined route.

If you do get stuck...

- Stay with your car. Do not try to walk to safety.
- Tie a brightly colored cloth (preferably red) to the antenna for rescuers to see.
- Start the car and use the heater for about 10 minutes every hour. Keep the exhaust pipe clear so fumes won't back up into the car.
- Leave the overhead light on when the engine is running so that you can be seen.
- As you sit, keep moving your arms and legs to keep blood circulating and to stay warm.
- Keep one window away from the blowing wind slightly open to let in air.

DEALING WITH NATURAL HAZARDS:

KIDS • TAKE • CHARGE

Stay tuned for storm warnings...

- Listen to your local radio and TV station or NOAA Weather Radio for updated storm information.
- Know what a tornado WATCH and a tornado WARNING mean. A tornado WATCH means a tornado is possible in your area. A tornado WARNING means a tornado has been sighted and may be headed for your area. Go to a safe place immediately.
- Tornado WATCHES and WARNINGS are issued by county or parish.

When a tornado WATCH is issued...

- Listen to NOAA Weather Radio or local radio and TV stations for further updates.
- Be alert to changing weather conditions. Blowing debris or the sound of an approaching tornado may alert you. Many people say it sounds like a freight train.

When a tornado WARNING is issued...

- If you are inside, go to the safe place you picked to protect yourself from glass and other flying objects. The tornado may be approaching your area.
- If you are outside, hurry to the basement of a nearby sturdy building or lie flat in a ditch or low-lying area.
- If you are in a car or mobile home, get out immediately and head for a safe place (as above).

After the tornado passes...

- Watch for fallen power lines and stay out of damaged areas.
- Listen to the radio for information and instructions.
- Use a flashlight to inspect your home for damage.