



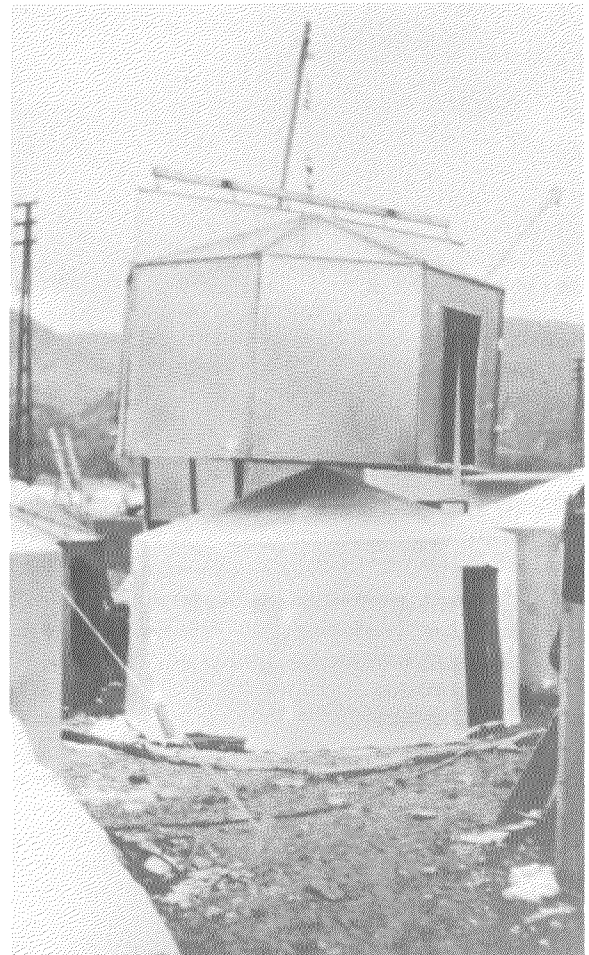
(Credit OXFAM)

Following the Lice earthquake in eastern Turkey in 1975, OXFAM, a voluntary agency, used their polyurethane house for the first and only time.

The units were made by an operator standing inside an aluminium mould (with his own air supply), and spraying the foam onto the mould. Four hundred and sixty-three units were produced.



(Credit OXFAM)



(Credit OXFAM)