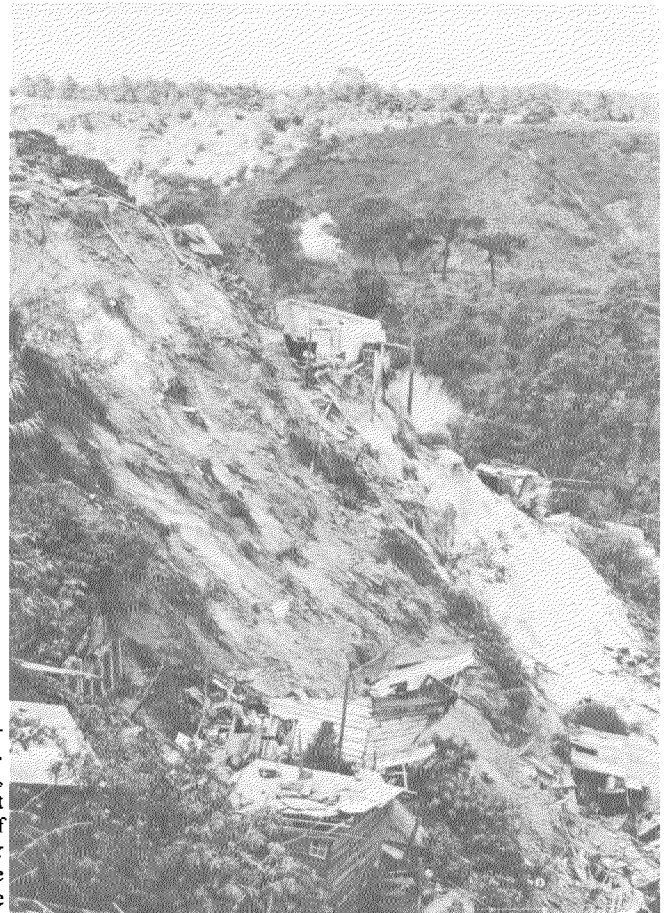




(Credit OXFAM)



(Credit OXFAM)

A consequence of land-tenure problems can be seen in these photographs of devastation after the Guatemalan earthquake of 1976. Within the city area, poor families had illegally occupied unstable, sloping "Barrancos" (ravines in the city with very steep slopes subject to landslides). The earthquake resulted in the progressive collapse of houses. Assisting agencies were faced with the dilemma of whether or not to provide assistance to rebuild in such dangerous locations. The ultimate solution is a change in the pattern of land tenure, with the government making safe land available for low-income families.



(Credit OXFAM)