

Figure 7. A. Slickensides formed in damp plastic soil along the 1976 surface rupture. Ground surface is about 10 cm above top of photograph.
 B. Detail of slickensides. Grooved block was broken from area outlined by dashed lines in A.

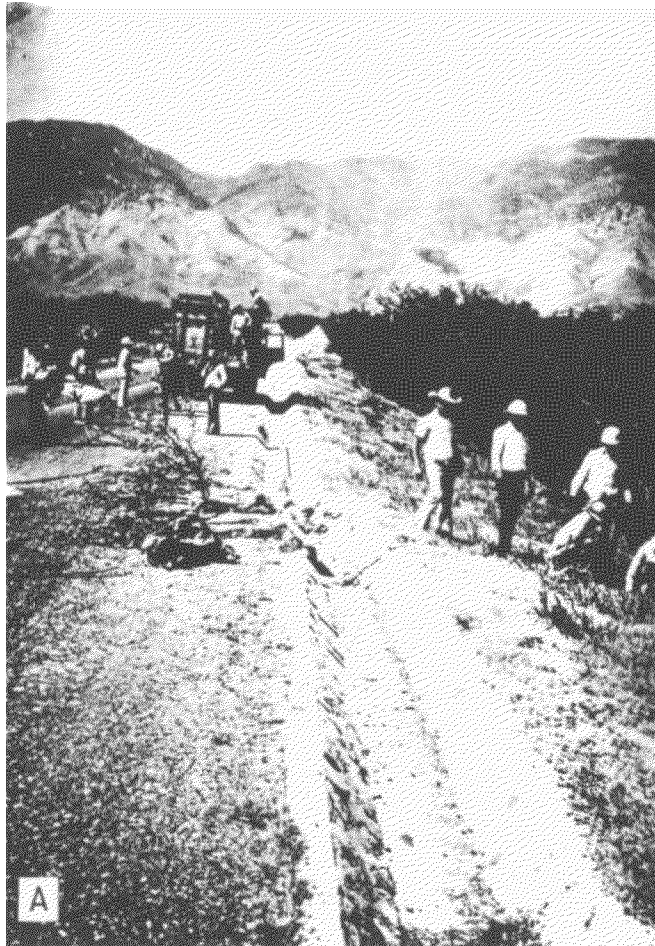


Figure 8. (A) View north along Highway CA-10 near Zacapa showing drainage ditch offset by 60-cm left-lateral and 5-cm south-side-down displacement on the Motagua fault, 8 February 1976. Black line drawn on north side of offset is alined with the upper inside edge of the section of ditch in the foreground.