



Figure 8. Collapsed southeast corner of a reinforced brick house at La Playa. The damage was caused by 1.5 m of lateral spreading. The front of the house also subsided and allowed the fireplace to rotate. There were no cracks in this structure except the one due to lateral spreading and differential settlement.



Figure 9. Floor of a concrete-block house pulled apart 1.5 m by lateral spreading. The house was located at the northwest end of the central lobe of the Villalobos River delta at La Playa.

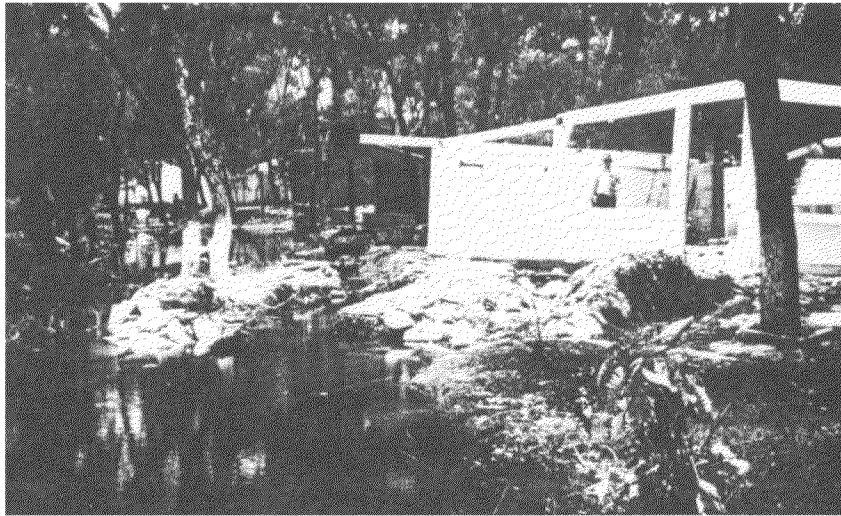


Figure 10. Back patio of the house shown in Fig. 9. Photo shows a series of ridges formed by lateral spreads (compare with Fig. 3) and trees standing in the water. The latter is a consequence of subsidence. The house shown in Fig. 11 is in the background.



Figure 11. A large back yard slid away from behind this concrete-block house leaving the unevenly subsided foundation at lake level. The new lake bottom next to the house is composed of sand.