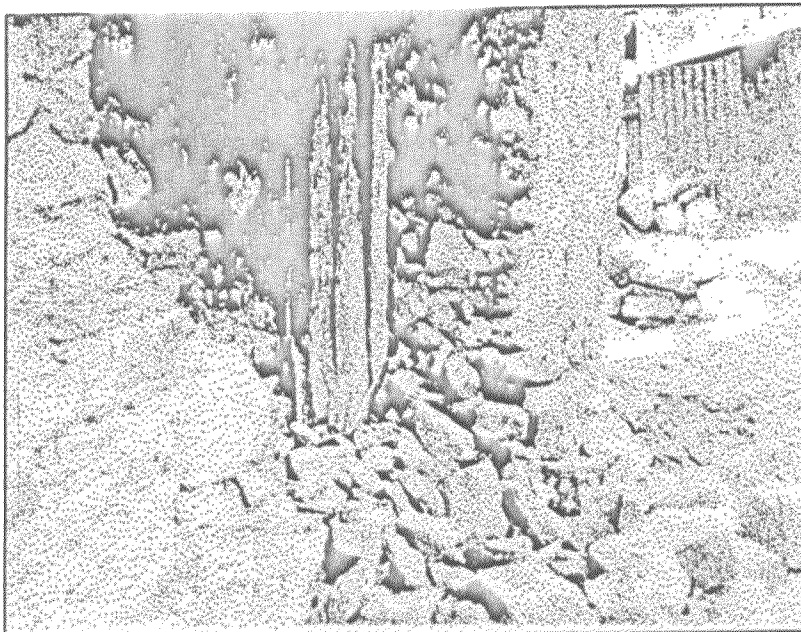


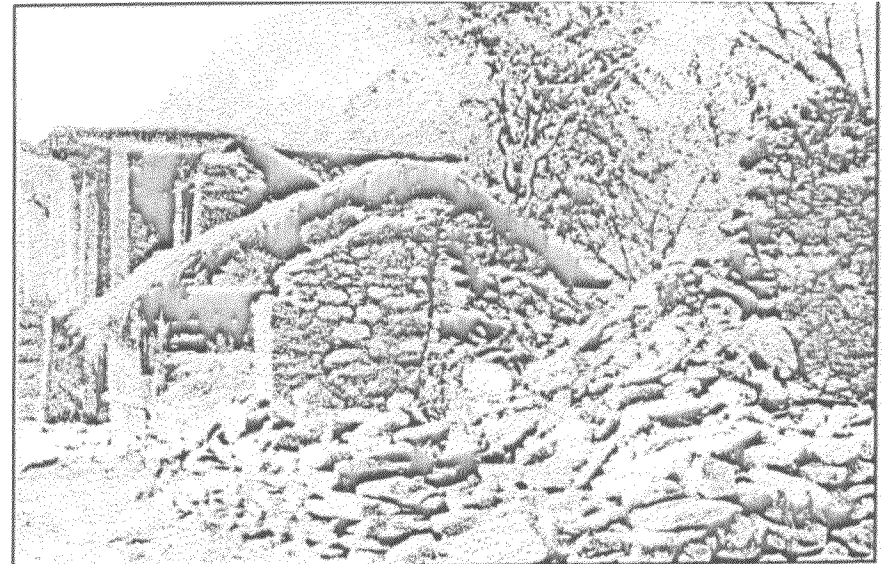
Mechanisms of Failure and Reconstruction

FAILURE OF WALL MASONRY

The stone masonry in both external and internal cross walls has shattered to a pile of rubble following repeated earthquake shocks. The masonry has been built with short or even rounded cobbles, with very few through bond stones.



Failure of one face of stone masonry wall: Village Hurri, Bhatwari Tahsil, Uttarkashi District



Failure of Stone masonry in traditional Slate roofed building: Village Maneri, Bhatwari Tahsil, Uttarkashi District

A large number of internal and external walls have failed because of inadequate through stones in the wall. The failure of one face then takes place either in buckling or shear, independent of the other, often leading to progressive collapse if the lateral earthquake load reverses itself.