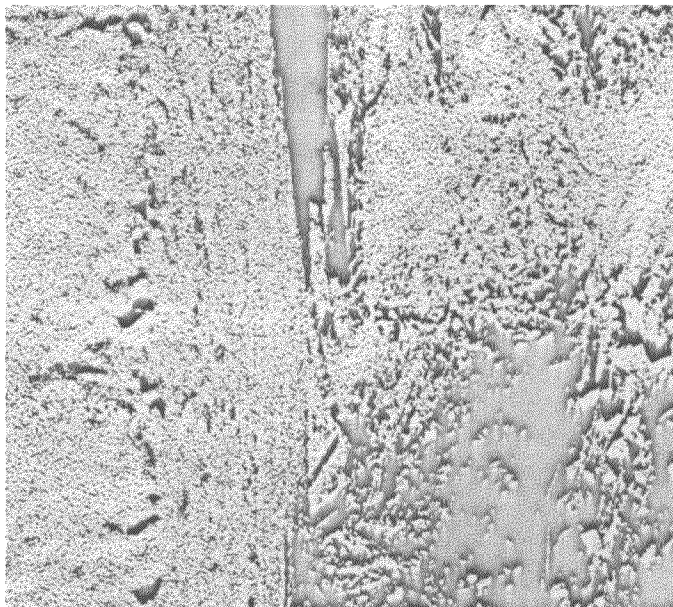


A typical house with random-rubble walls and a thatch roof on timber planks. Note the long corner stones protruding from wall and therefore, no corner failure. The staircase leading to the first floor has collapsed. Also note the central position of the opening in the end wall.



A traditional thatch roofed house with stone walls in mud mortar: Village Ragsya, Pratapnagar Tahsil, Tehri Garhwal District



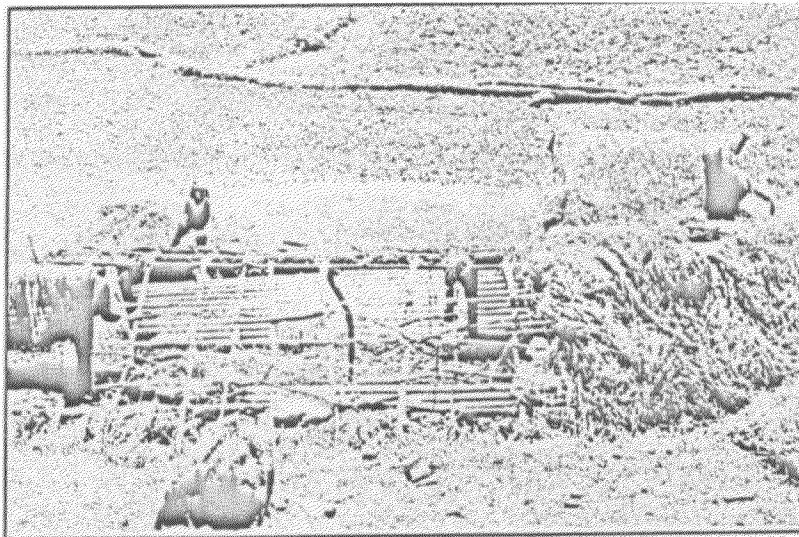
Gap between rear retaining wall and building in traditional construction: Village Ragsya, Pratapnagar Tahsil, Tehri Garhwal District

This traditional house has not suffered the fate of many recently constructed buildings in which the rear wall abutted and the retaining wall. The minimum distance in the past between the two was 60 to 90 cm. to enable the gap to be cleaned and to drain properly during the monsoon.

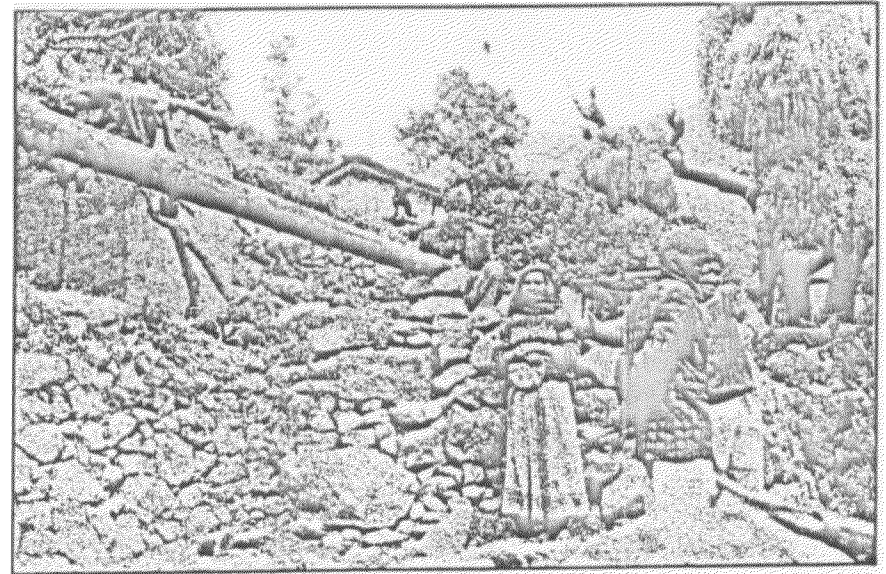
## EMERGENCY SHELTER

A family in the process of erecting an emergency shelter in the courtyard of their damaged house. The ridge piece has been salvaged from the damaged building.

Demolition of structures affected by the earthquake and maximum salvation of materials, shall be the next step after relief. The average cost of demolition/ salvation will be in the range of Rs. 4,000-10,000 per home. A large number of villagers, bereft of resources and technical guidance, will be compelled to live in their make-shift structures for a year, even longer.



Emergency shelter under construction in Village Ginda, Bhatwari Tahsil, Uttarkashi District



The start of an emergency shelter in Village Ragsya, Tahsil Pratapnagar, Tehri Garhwal District.

Emergency shelter being constructed in Ginda using green bamboo, straw and CGI sheet. This will be later covered with tarpaulin to provide some insulation from the snow and cold.

A total of 22 CGI sheets have been distributed by end February. Villagers are apprehensive that such structures may not be able to withstand the snow and the rain. Hence, there is a rush to convert some CGI sheets into boxes to store grain, clothes and valuables.