

"Documento original en mal estado"

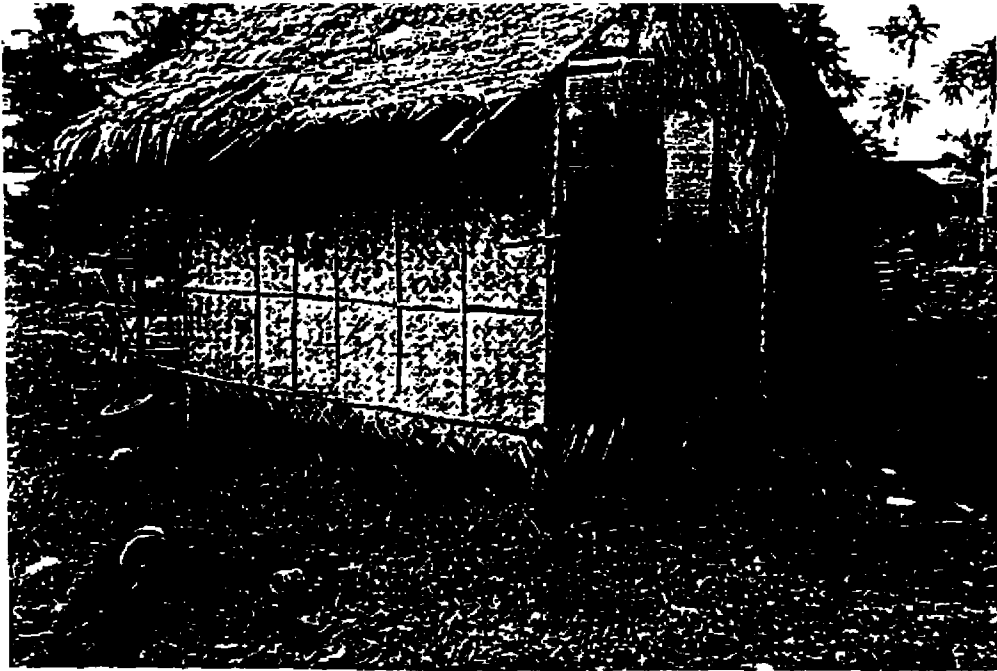


FIGURE 3. A TYPICAL NIPA HOUSE IN THE COASTAL AREAS



FIGURE 4. DESTRUCTION OF WOODEN HOUSES ALONG THE COASTLINE AFTER TYPHOON SISANG 1987

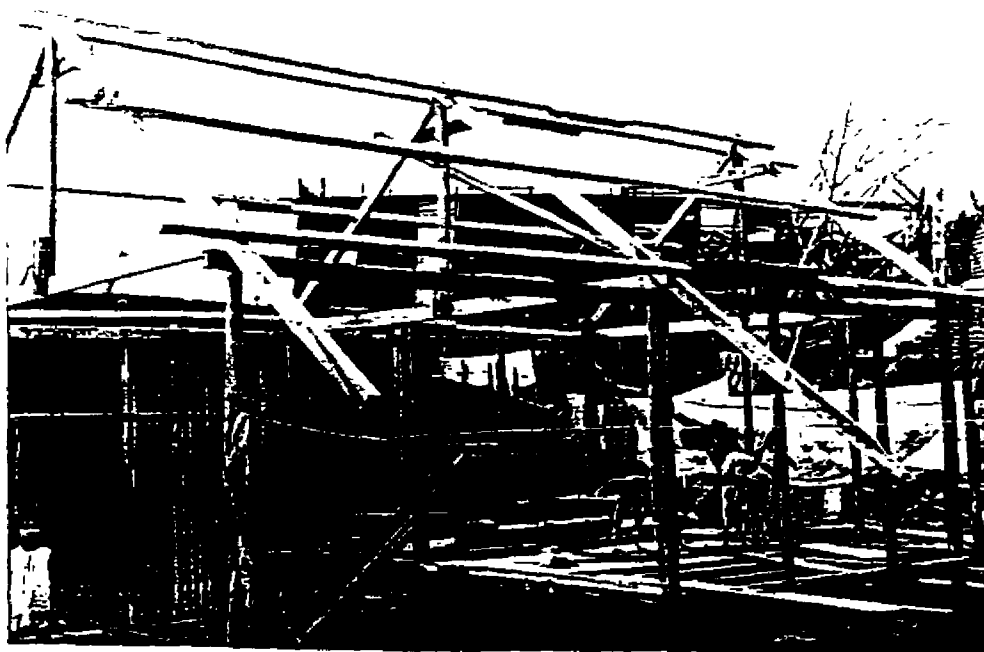


FIGURE 5. TYPICAL NIPA HOUSE CONSTRUCTION IN PROGRESS BY VICTIMS IMMEDIATELY AFTER TYPHOON DAMAGES



FIGURE 6. NEW DESIGN CORE SHELTER UNIT (CSU) IN USE USING LOCAL MATERIAL ANAHAW ROOFING AND LIGHT TIMBER BOARD SIDING

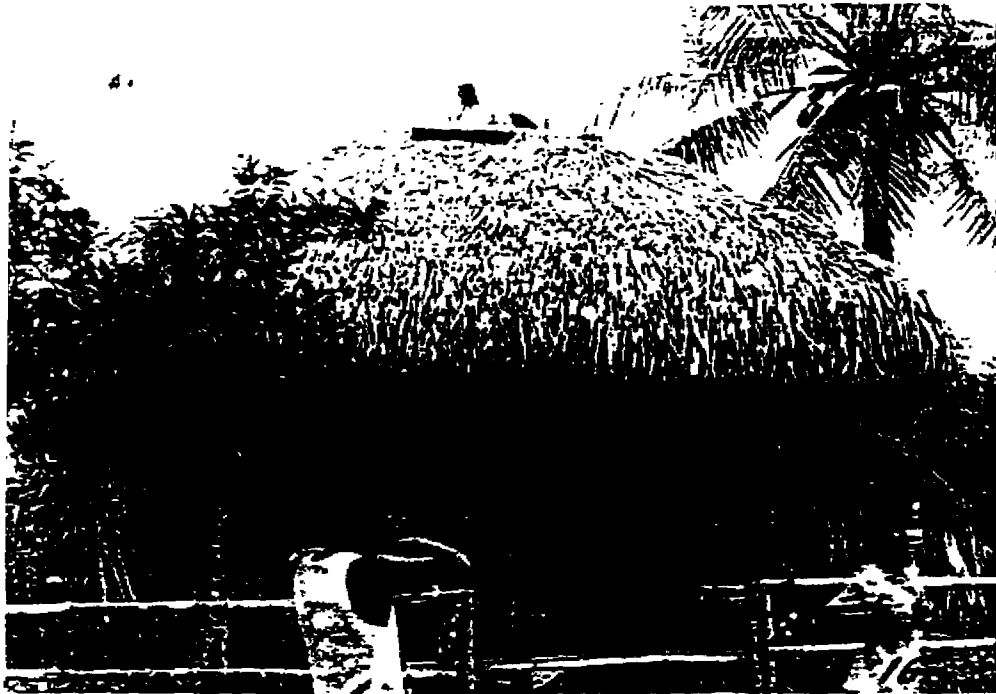


FIGURE 7. CORE SHELTER UNIT WITH SPLIT BAMBOO SIDING AROUND FOR WALL COVERING

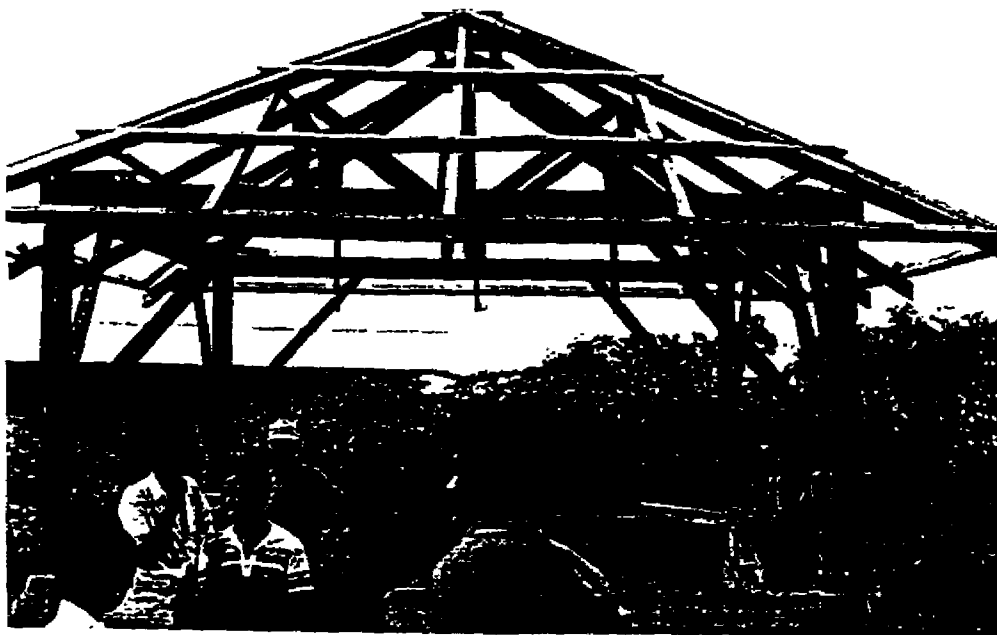


FIGURE 8. NEW DESIGN TYPHOON RESISTANT CORE SHELTER UNIT UNDER CONSTRUCTION IN A BARANGAY (VILLAGE) IN THE PHILIPPINES WITH CEMENT HOLLOW BLOCK (CHB) WALLS UPTO WINDOW LEVEL



FIGURE 9. SEVERAL CORE SHELTER UNITS UNDER CONSTRUCTION USING CEMENT HOLLOW BLOCK FILLER WALLS IN TAGAYTAY AREA IN CAVITE PROVINCE ABOUT 150 KM FROM MANILA



FIGURE 10. A GROUP OF HOUSES WITH SALVAGED GI SHEET ROOFING



FIGURE 11. A ROW OF HOUSES IN A PLOT OF LAND DONATED BY PHILIPPINE NATIONAL RAILWAY FOR THE PROJECT NEAR TOWN BATO IN CAMARINES SUR PROVINCE



FIGURE 12. ORIENTATION AND TRAINING FOR PROJECT STAFF IN LUCENA CITY, QUEZON PROVINCE



FIGURE 13. CONSTRUCTION OF CORE SHELTER UNIT IN PROGRESS AS A PART OF TRAINING FOR PROJECT STAFF

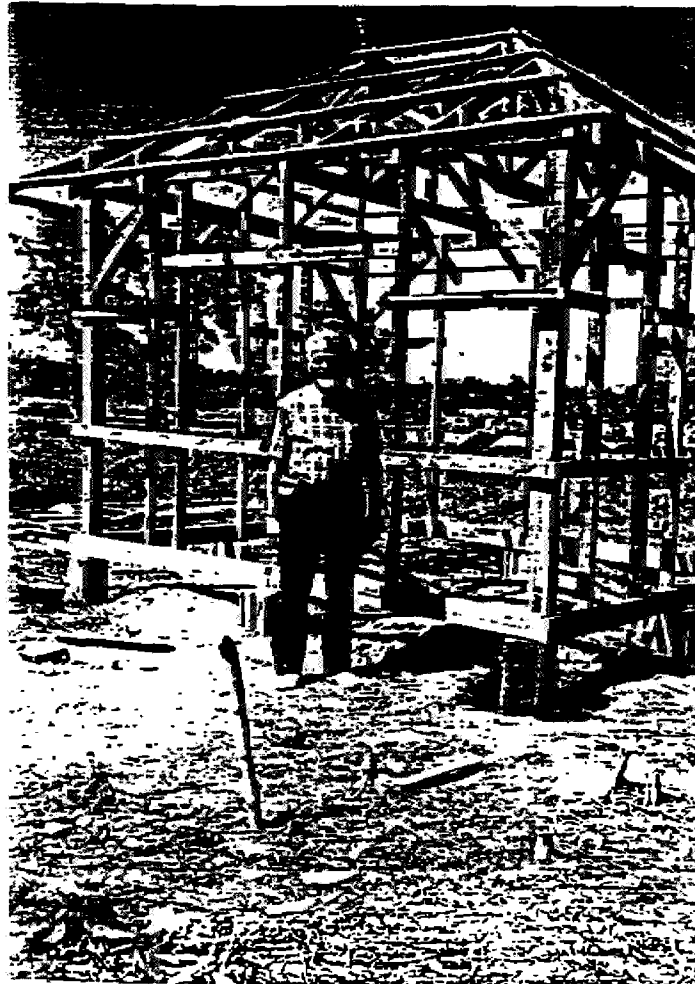


FIGURE 14. COMPLETED CORE SHELTER UNIT FRAME DURING TRAINING AT LUCENA CITY

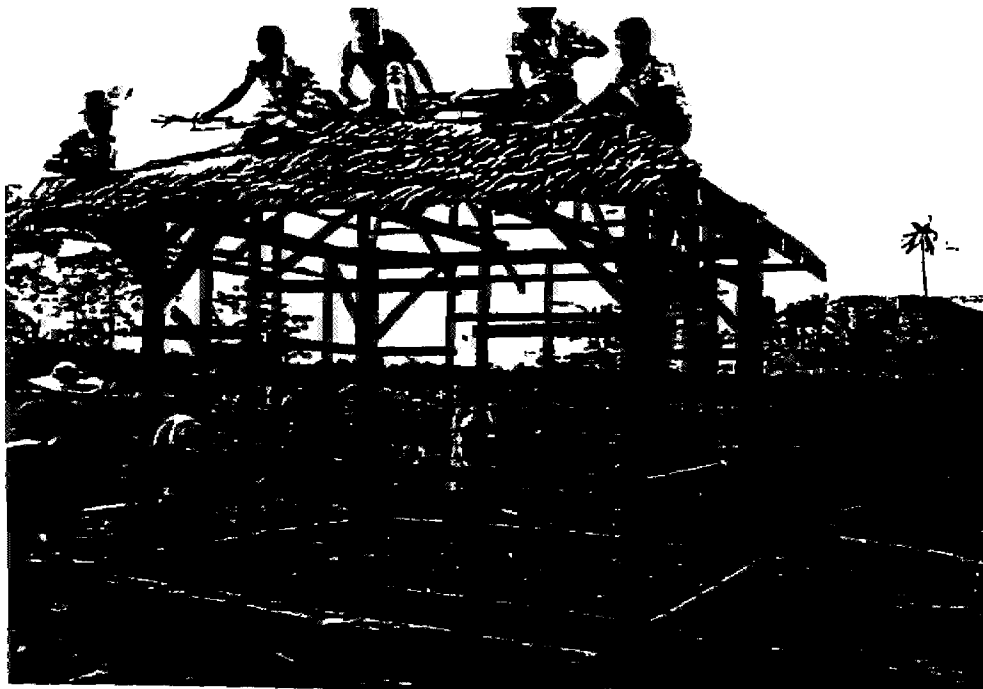


FIGURE 15. LOCALLY AVAILABLE MATERIAL NIPA BEING USED BY BENEFICIARY FOR ROOF COVERING IMMEDIATELY AFTER CORE CONSTRUCTION



FIGURE 16. QUALITY CONTROL INSPECTION BY PROJECT STAFF FOR UNITS IN USE AT LINGAYEN, PANGASINAN PROVINCE

CSA ALLOCATION AND STATUS OF IMPLEMENTATION
As of November 1990

REGION	CSU ALLOCATION	BUDGET COST	STATUS OF IMPLEMENTATION					
			COMPLETED		UNDER CONSTRUCTION		TO BE CONSTRUCTED	
			Number	%	Number	%	Number	%
I	803	5,740,500.00	415	52	333	41	55	7
II*	1,300	8,826,591.75	1,125	87	44	3	131	10
III*	899	5,810,091.75	756	84	77	9	66	7
IV*	2,494	11,801,194.75	2,206	88	196	8	92	4
V	5,008	24,955,678.24	4,388	88	438	9	182	4
VI*	447	2,429,000.00	173	39	160	36	114	26
VIII	1,156	7,196,248.55	671	58	85	7	400	35
IX	60	500,000.00	0	0	0	0	60	100
X	200	1,300,500.00	175	88	17	9	8	4
XI	200	1,420,000.00	30	15	0	0	170	85
XII	1,290	8,000,000.00	576	45	404	31	310	24
CAR	200	1,930,000.00	23	12	84	42	93	47
NCR	24	168,000.00	0	0	0	0	24	100
TOTAL	14,081	80,077,805.04	10,538	75	1,838	13	1,705	12

* Regions with additional CSU for the month

Core Shelter Unit
Additional Photographs





