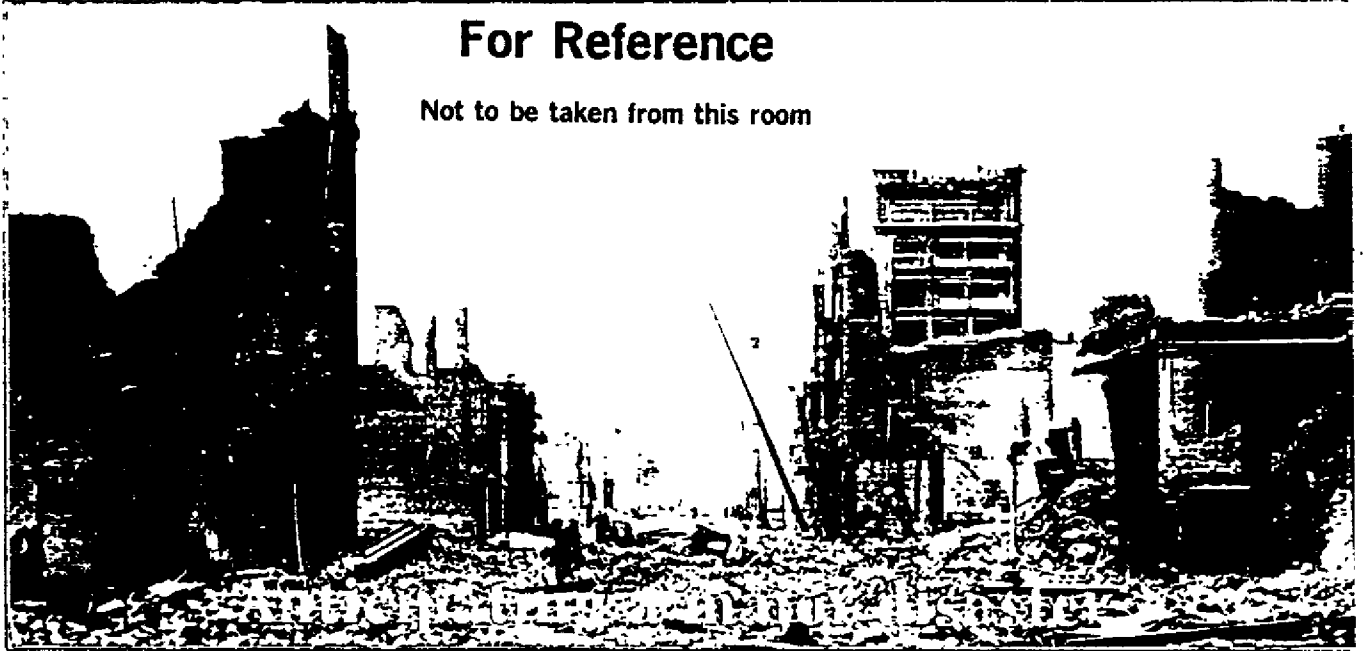


Earthquake Preparedness

For Reference

Not to be taken from this room



Photos courtesy of the authors

for Fire Departments

By FRANK T. BLACKBURN,
CHARLES SCAWTHORN
and JACK NEIL

The earthquake struck just after 5 A.M., killing 2500 people, starting more than 50 fires, breaking more than 200 major water mains and 22,000 building service connections, rendering water supplies for firefighting useless. The fires quickly raged out of

Frank T. Blackburn is an assistant chief with the San Francisco, California, Fire Department and has expertise in earthquake planning and preparedness. He formerly was on the faculty of City College, San Francisco, responsible for strategy, tactics and preplanning. Charles Scawthorn is vice president of EQE Engineering Inc., located in San Francisco. Jack Neil is a lieutenant with the San Francisco Fire Department and has expertise in earthquake planning and preparedness.



control, forcing firefighters to retreat street by street. Three days of blazing conflagration destroyed more than 28,000 buildings, including the entire central business district. Many insurance companies went bankrupt in the days that followed and individuals and businesses were wiped out.

That was the story of San Francisco in 1906. Is it just a story today or will your department have to respond to the

(Above and left) Devastation brought on by the 1906 earthquake in San Francisco is evident. As a result, San Francisco constructed underground cisterns at key locations and developed a portable water supply system.