

photo: EQE, Inc.



photo: EQE, Inc.

SICARTSA Steel Mill. The top photograph shows the switchyard where a disconnector switch similar to the one seen near the center of the photograph fell due to a cracked ceramic insulator. A transformer similar to the one at the left also suffered a cracked oil seal. The lower photograph shows a pipe support structure with a large structural steel building in the background. Both are representative of the types of components located at this plant, all of which performed well during the earthquake. A concrete frame administration building had severe damage to masonry panels and was evacuated.

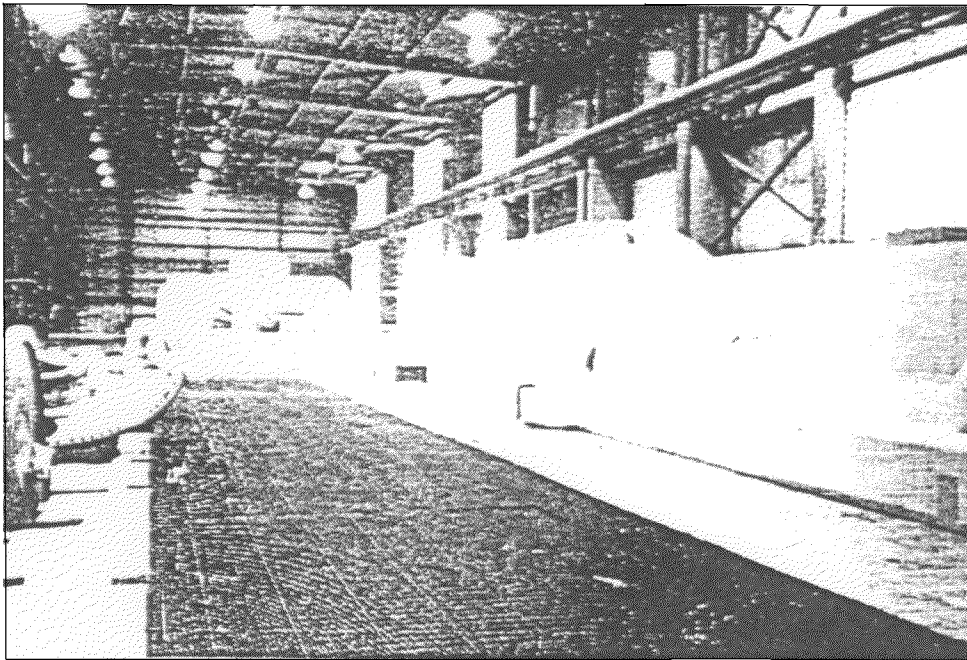


photo: EQE, Inc.

Valle de Mexico Power Plant. The operating floor of this fossil power plant is shown. It is located about 20 miles west of Mexico City and is built on a rock site. The plant includes three 150 megawatt units and one 300 megawatt unit. Plant personnel reported minor shaking from the earthquake. Three units were operating at the time of the earthquake; two remained on-line and one disconnected from the power grid due to relay actuation caused by loss of load in Mexico City. There was no damage to the plant.